

Woodhall Spa Cottage Museum



“CATS” Attract the Crowds

Newsletter No. 39
November 2021

Woodhall Spa Cottage Museum

A Note from the Editor

Another season is over and this year we were able to open from May 20th. and from August the full experience with touch screens etc. was available to visitors, so we were able to resume normal entrance fees.

Despite being open for only 4 days a week, compared to all 7 days in 2019, the visitor numbers were actually higher when compared with the 2019 figures. Income didn't quite follow, as when we just asked for donations, up to August 1st the Income was down by about half. Even so it has been a very successful year.

The Music in the Garden events were able to go ahead in full and resulted in the best attendances we have ever achieved. Our front page picture gives an idea of the numbers who attended the Coningsby and Tattershall Strummers concert on August 29th. We

were able to achieve some added publicity thanks to BBC Radio Lincolnshire, who paid us a visit on Sunday 8th August, as part of their "Pirate Gold" programme - see page 3.

This year has seen the presentation of the Bell Award to a young volunteer, Holly Bradbury - report on page 3. Holly has written about her experience as a young person volunteering at the museum and you can read this interesting article on Poppy's Page, page 18. We hope this will help to inspire other young people to follow her example.

After a number of false starts, the Friends were finally able to have a get together at the museum. On Wednesday October 6th, Tea and Cakes were served on the museum courtyard as a thank you gesture to all the Friends and Volunteers who have so generously given of their time over the past few months. Things almost begin to feel like normal!

Don't forget to buy your tickets for the Memorial Lecture which takes place at the Golf Hotel on 13th November. In the meantime can I wish you all a Very Happy Christmas and a healthy New Year.



Philip Groves

Front Cover Story

.The Coningsby & Tattershall Strummers, "CATS", brought in some of the biggest audiences of the recent hugely successful "Music in the Garden" Summer Sunday afternoon concerts.

In this Issue

Page 3	Bell Award Winner	Page 8	From the Collection
	Pirate Gold Visit	Page 9	Meeting & Greeting with Patzi
Page 4	The Earth Museum	Page 12	Music in the Garden
Page 5	Marjorie's New Book	Page 16	Bertha, November 1921
	Arnhem Remembered	Page 18	Poppy's Page
	175 Club Winners	Page 20	The Friends' Page

The Newsletter Committee

Chairman - Paddy O'Neill Editor - Philip Groves Marjorie Sargeant

To contact the Newsletter Team please write to:-

The Cottage Museum, The Bungalow, Iddesleigh Road, Woodhall Spa, Lincs. LN10 6SH

or email philanddeliagroves@gmail.com

Reg. Charity: 1114268 Reg. Museum: 1929

Bell Award Presented to Young Volunteer

A special presentation was made by David Hill, Chairman of the Woodhall Spa Cottage Museum, on 26th August of the Bell Award to a young 16 year old volunteer, Holly Bradbury. Holly, who is a student at Caistor Grammar School, has spent time this summer volunteering at the museum, having seen the museum was advertising for more volunteers. She said "I wanted to expand my knowledge of the history of the village I've grown up in. I'm also really interested in History and I'd love to study History and Politics at university, so this was the perfect summer job for me!"

The Reception and Archive staff were so impressed with Holly's work they recommended her for the Bell Award and the directors were very happy to agree.

The Bell Award is given from time to time to a young person who has done something of merit for the Museum. The award came about as a result of a burglary at the Museum when the Bell Cup, which belonged to the Woodhall Spa Agricultural Show Society, was stolen. The Bell family, who had donated the cup, had retained the rights to it and donated the insurance payment to the Museum, but asked that the memory of Joseph Bell be maintained. The Museum Trustees at the time agreed to do this through the Bell Award.



Holly Bradbury Receives her Bell Award from museum Chairman David Hill

Philip Groves

"Pirate Gold" Visits the Museum

In mid July I received a phone call from Amanda Northcott-Wright from the BBC Radio Lincolnshire "Pirate Gold" programme asking if we would like to take part in the programme on August 8th. "Of course" I said and so it all started. She explained how the programme worked and stressed we must keep it secret that the museum was to be featured on that day. A week or so later I was sent the clue for the next venue, so we could give the "Pirate presenter" a bit of help with the clue solving. Frankly the clue was gobble-de-gook to me, but Kelly Jestin came to the rescue, having matched the names etc. in the clue to a particular event being held at Hanworth Park that day. I was told that I would be contacted on my mobile phone about 30 minutes before the Radio car was due to arrive. Sure enough at midday I received the call and parked outside the museum and listened to the programme so I would be ready for them. The previous clue had not gone quite to plan as they thought the programme was on the following Sunday!



Phil Groves and Rachel Baynton

At about 12.20 Rachel Baynton arrived and after a brief chat, off air, the interview got under way. The guys were erecting the awnings on the lawn for the afternoon's Music in the Garden Concert with "Sing it Loud", which gave me plenty of opportunity to give the concerts some publicity. The Tourist Information work we do also came up for discussion. All in all it was a very interesting experience and far less stressful than I had expected.

Philip Groves

Woodhall Spa Cottage Museum

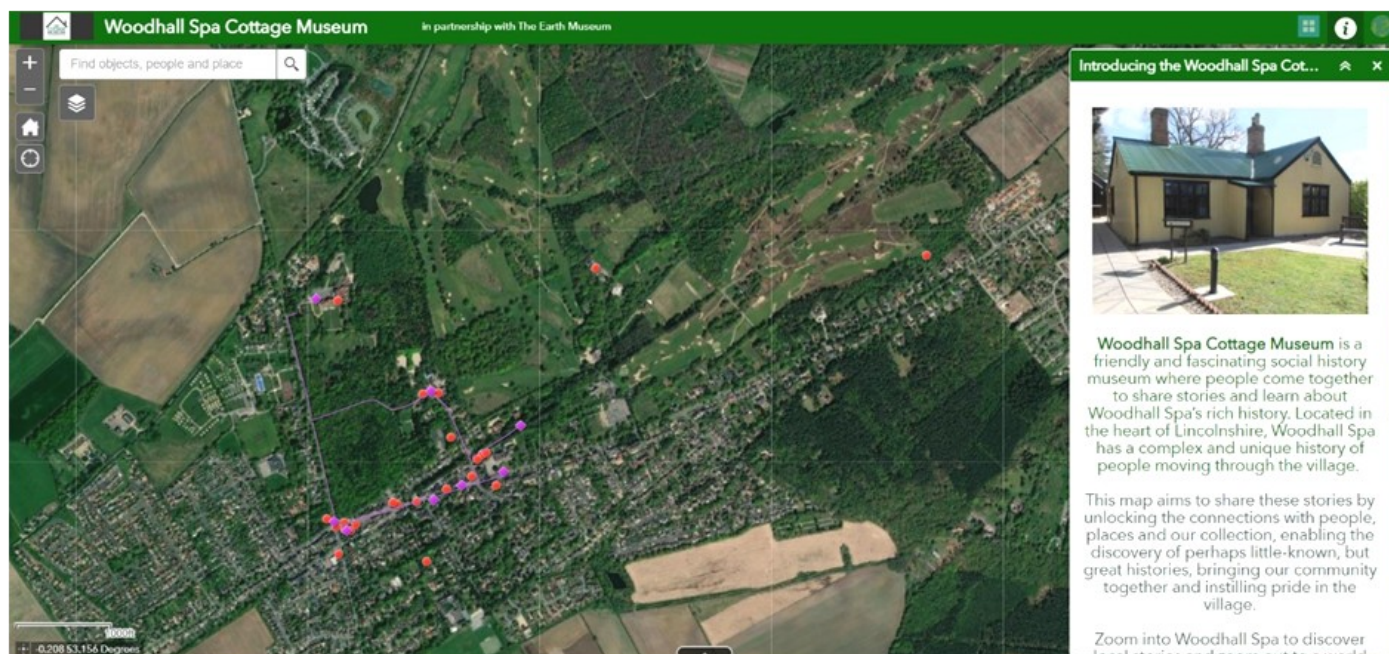
The Earth Museum

The Earth Museum is a digital resource re-connecting heritage treasures and stories with the people and places that give them meaning in the present. You can discover more at the website: <https://theearthmuseum.co.uk/>

Janet Owen, founding director at The Earth Museum reports: *'It has been a delight to work with Woodhall Spa Cottage Museum on the East Midlands Mapping Your History project. Thirteen community-based local museums across the East Midlands are collaborating with us to map a selection of object stories as a celebration of the fantastic and important history they care for. The collective map was published on Heritage Open Day and we hope you enjoy this individual contribution by Woodhall Spa Cottage Museum, created through the hard work and indispensable knowledge of your local heritage team.'*

It was also an opportunity to join the 'Celebrating Britain's small museums' national interactive map resource. The project lasts for three years and more stories and artefacts will be displayed in 2022 and 2023. The trails around the village are also included in this resource which can be accessed from our website.

The team involved in this project are Patricia Duke-Cox, Kelly Jestin, Tracie Tavener and Nigel Webb.



Screen shot from the Cottage Museum's contribution

Patricia Duke-Cox

Volunteer Coffee Mornings

A coffee morning is normally held monthly to enable volunteers from the various teams to meet each other and to meet some of the Directors. It affords a great opportunity to exchange ideas and make suggestions, or just have a general chinwag! The next events are planned for Wednesday morning November 3rd from 10.30am, December 1st and on the first Wednesday of the month thereafter, dependant on public health considerations. but please check our website, or social media for the latest information.

New Book from Marjorie Sargeant

Marjorie Sargeant, our popular local author, has written, a light-hearted story about a fictitious family living in Woodhall Spa in the first decade of the last century, entitled "Edwardian Days in Woodhall Spa."

It is set in its time – did you know that parliament discussed the desirability of a channel tunnel in 1907, or that there were 37 women among the 2,000 athletes in the Olympic Games, held in this country for the first time in 1908?

In Woodhall Spa, as well as a fashionable Season with wealthy visitors, there were a few awkward residents having weighty discussions about boots for firemen and the constant problem of the roads, deeply rutted by hawker's carts, with increasing numbers of horseless carriages frightening horses on the Broadway. Would a canal, from the River Witham up to the Spa, be a solution?

When asked if the "Bertha" articles for the Newsletter had inspired the book Marjorie replied "The inspiration for the new book was lockdown! I was going through files and realised I had information – sometimes trivial – which might as well be used somehow. Then I thought of "A Week in Woodhall Spa" which was events in W/Spa as a story. So this one is a mixture from talks I have given and yes, Bertha, in so far as the family has a boarding house, with bits from history books and my dear friend Mr. Google.

The book is due to be published in a few weeks time and is expected to cost £10 per copy. It will, be available to buy online at www.cottagemuseum.co.uk as well as Book Fayre in Woodhall and possibly Perkins in Horncastle.

Arnhem Remembered

On Saturday September 11th members of the Woodhall Spa Royal British Legion gathered in the museum garden for a short Service of Remembrance. to honour those

brave soldiers based in Woodhall Spa who in 1944 fought at Arnhem, many of whom did not return, or were wounded in the Battle. The event was organised by Dave Mullenger, the Branch President and the short service was taken by Sheila Mullenger. The Branch Wreath, after being blessed, was laid on the Arnhem Memorial by Branch Member Steve Hall. The Branch President recited the homage, which was followed by a minute's silence. After the service refreshments were provided by the museum.



Left to Right Steve Hall, Sheila Mullenger and Branch President Dave Mullenger

175 Club Winners

July 2021

£25 [172] Sandra Taylor
£20 [37] Sue Morrison
£10 [27] VOC Antiques
£10 [116] Heather Bradshaw

August 2021

£25 [26] Jane Starling
£20 [6] Helen Brass
£10 [173] Ann Houlton
£10 [58] Eric Sargeant

September 2021

£25 [152] Sally Smithson
£20 [19] Annette Southcott
£10 [13] Sally Noble
£10 [32] Carole Starling

October 2021

£25 [81] Jean Hill
£20 [48] Mike Midgley
£10 [137] Dick Needham
£10 [36] VOC Antiques

Philip Groves

Visit
OAKLANDS~GRANGE PARKS

Horncastle Road, Woodhall Spa



A private park home estate offering both security and peace of mind. Developed to the highest standards with homes at affordable prices. You can be assured of a warm welcome.

Visit our new website on
www.oaklandsgrangeparkhomes.com
or for further details ring Heather Shepherd on
01526 352312
or email: oaklandsgrange@live.co.uk

or just “drop in”



WATERMAN CARAVAN SERVICES
FULLY QUALIFIED CARAVAN & MOTORHOME
ENGINEER
BASED IN HORSINGTON

FULLY MOBILE

***FULL SERVICING**
***HABITATION SERVICING**
***UNDERGEAR SERVICING**
***GAS QUALIFIED AND CERTIFICATES PROVIDED**
***DAMP REPAIRS**
***ACCESSORY DEALER**

TEL: 01526388350

MOB: 07824778357

EMAIL: david.waterman6@btinternet.com

WWW.CARAVANSUPPLIESINTERNATIONASHOP.COM

DECORATING
SERVICES

Professional Painting
and
Decorating Company

Operating for
over 20 years

Woodhall Spa Office 01526 568568

Horncastle Office 01507 834568

During 09:00am to 5:00pm

or email:
decoratingservices8000@gmail.com

TEA HOUSE IN THE WOODS TEA HOUSE & RESTAURANT

Woodhall Spa's Oldest Tea Rooms

Open Tuesday - Sunday from 10am

Offering homemade cakes, lunch & traditional afternoon teas

Food available all day

Evening restaurant menu from 5.30pm

Coronation Road, Woodhall Spa, Lincs. LN10 6QD 01526 354455

www.teahouseinthewoods.co.uk

GRAHAM FIDLING Traditional BUTCHERS

woodhallbutcher.co.uk • 

7 The Broadway, Woodhall Spa, LN10 6ST

 01526 352196 •  07866805594

Local traditional butcher selling a wide variety of meats, reared locally on the outskirts of Horncastle. Cooked meats, a selection of pies and condiments.

Also selling Lincolnshire specialities, including award-winning Lincolnshire sausage, stuffed chine and pork and apple burgers.

Orders taken for pubs, tea rooms, restaurants, schools, hotels and care homes. Orders can also be made by phone and delivered free of charge within 10 miles!



Toni O'Neill

Member of The Society
of Floral Painters



Commissions Undertaken for
Floral Paintings in Watercolour
in Memory of Your Special Occasion
or Flowers from your Garden

For more information call 01526 354982
or e-mail oneill_t3@sky.com

From the Collection - THE CASE OF ARTHUR SHAW



Lady Grace Weigall

For this newsletter leading up to Christmas, I am going to tell a good-feel story. Friends of the Museum I am sure are familiar with Lady Grace Weigall (left) and the philanthropy she bestowed on many occasions for our local community. This story tells of her beneficence to a man many miles from Woodhall Spa.

In July 1935, Arthur Shaw, a labourer, lived in Stratford Place, Birmingham with his wife and eight children. A son, George, was due to appear before the Quarter Sessions for a misdemeanor. In case of a non-appearance, Arthur stood surety for a bail of £10 (in 2021 approximately £730.) George did not attend, apparently having not been informed of the date for his appearance. The magistrates called for the bail which could not be paid. As Mrs. Shaw stated "...we haven't got 10d let alone £10."

Arthur was sent to prison for 51 days as the law stated. George also went to Winson Green prison. The local community where Arthur lived rallied round and collected what little they could towards the cost of some legal assistance. At the same time complaints were made to the Home Office but the decision was upheld.

The case came to the attention of Lady Weigall whilst residing in her London home. She rang the Governor of the prison who put her in touch with Mr. Blenkinsopp, the Deputy Sheriff. She telegraphed him the £10 bail money. Both Arthur and George Shaw were released from prison.

The neighbours saved coppers were sent to Mr. Willison, the solicitor in the case. He purchased a silver pencil and

on behalf of the Shaw's and their neighbours, sent it to Lady Weigall in appreciation of her assistance. Grace was "...deeply touched". With publicity surrounding the case, the Home Office relinquished, and sent Lady Weigall's £10 back to her.

As would be typical for Grace Weigall she forwarded the returned £10 to the Shaw family. Have a Happy Christmas.

Nicholas Duke-Cox

Community Room for Hire

At the Cottage Museum

Very reasonable rates:

Morning, afternoon, evening or all day rates.

Maximum number of people 16

(dependant on Covid Restrictions)

For further details and bookings please contact:

info@cottagemuseum.co.uk

Meeting & Greeting with Patzi Thorne & her Fairy Houses



Fairies came into our lives in Berkshire when two gnomes came to stay with us for Christmas and never left! They were given a couple of ferns to live under and soon a few fairies arrived flying in the trees - Starlight Glen had begun.

We set about the construction of Dreamtime Corner, Trip-trap Bridge, Trickledown Stream, Rainbows End Wishing Well and Moonbeam Cottage which the grandchildren decorated and played in for years. A Fairy Mail Box received tiny letters which were replied to.

Little houses dotted Starlight Glen, inhabited by beautiful fairies and all was presided over by Wise Owl. Many children came to play and it gave us much joy.

Time went by and we followed our daughter and her husband to Lincolnshire; the fairies, of course came too!



Patzi takes tea from her Edwardian china



The row of Fairy Houses by Patzi's front hedge

Soon there were little houses dotting our new garden and when we acquired a large number of logs a little row of houses appeared by the front hedge and we knew the fairies had settled in Woodhall Spa!

Painted stones were added to by passers-by and were very much appreciated by the fairies. Our house, of course, is called Moonbeam Cottage.

The latest little building to appear is the fairy Cottage Museum which has been inspired by my experience volunteering at The Cottage Museum. We had helped during the 40s weekend and I had joined the Education Team,

until Covid struck and we all locked down.

Once the Museum opened again this year, I volunteered in the Visitor Services Team and it has added a new dimension to my life. I really enjoy chatting to visitors in the Wield Family Room and sharing my newly acquired knowledge of the history of Woodhall Spa.

I have made many new friends and even take my tea in an Edwardian cup and saucer!



The latest building - The Fairy Cottage Museum

Patzi Thorne

Woodhall Spa Cottage Museum

India Village

15 The Broadway
Woodhall Spa
Lincolnshire LN10 6ST
Tel: 01526 352223/354657



Opening Times
Midday - 2.00pm
5.30pm - 11.30pm
7 Days a Week

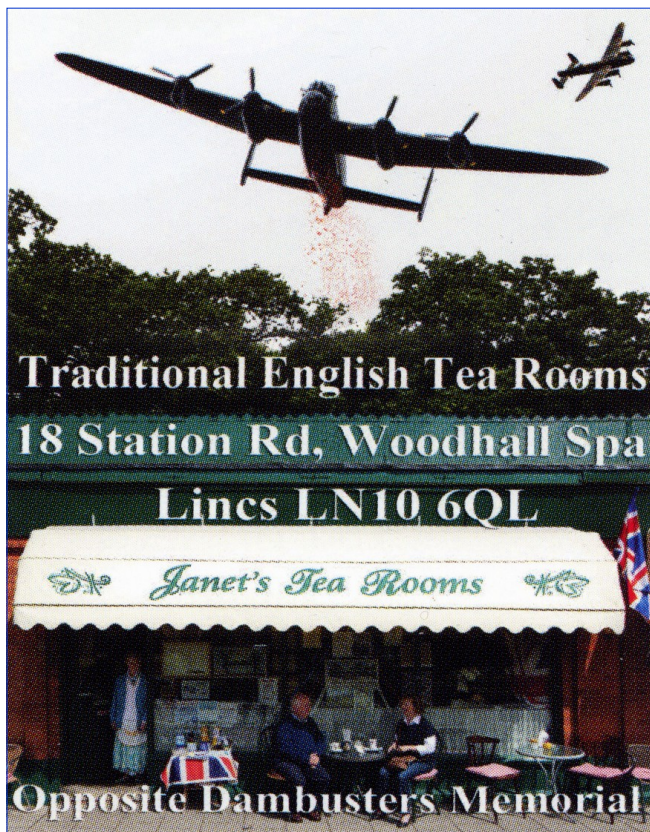
**10% Discount
on Take-Aways**

*For the Best Indian
and
Eastern Dishes*

fashion by
rieke
ANTISTRESS®



PETER SCOTT
1 The Broadway
01526 353935
Open 7 days



THE MELROSE

BROADWAY CENTRE WOODHALL SPA

A warm friendly family run
business hidden away at the
bottom of the Broadway Centre,
serving back to basics,
home-cooked foods using
local produce.

Open 9am Monday - Saturday

Breakfasts
Home cooked lunches
All day menu

TEL 07983638246
OR
07930878803



PREMIER PET CARE

QUALITY PET FOOD
AND ACCESSORIES

PROFESSIONAL FRIENDLY
SERVICE AND ADVICE

STOCKISTS OF ALL MAJOR
BRANDS PLUS EVERYTHING
AVAILABLE TO ORDER

FREE LOCAL DELIVERY

01526 352626

Unit 1, The Broadway Centre, The Broadway
WOODHALL SPA, Lincs. LN10 6ST
mail@premierpetswoodhallspa.co.uk
www.premierpetswoodhallspa.co.uk

Grimsby Town Fish Products

on The Mall car park

every Friday morning
9.00 - 10.00 am

for HOME DELIVERIES

ring JOHN on 07708 218821

Tim Fry

Traditional Signwriter

Signwriter with over 35 years experience

- Vintage Vehicles
- Commercial Vehicles
- Trailers & Curtain sides
- Narrow Boats
- Shop Signs, Sign boards
- House Signs
- Banners & Shop Canopys
- Exterior & Interior Walls

Please visit my website at....

www.timfrysignwriting.uk

Instagram... @timfrysignwriting.uk

01526
354492



07810
351511

Woodhall Media

Maps to magazines | locals to tourists
we have the media to promote all businesses



Woodhall Media Ltd
20 Abbey Dr, Woodhall Spa LN10 6QU
T: 01526 580383 | www.woodhallmedia.co.uk

Woodhall Spa Cottage Museum

Music in the Garden

As some of you will know, the “Music in the Garden” events evolved in 2017 after Gill Noble piloted a series of musical events in the museum garden in the summer of 2016. The very first “Music in the Garden” event was held on Sunday July 31st 2016 and featured Mike Warwick, who sang Rock and Roll Music to an enthusiastic audience. This was followed on August 8th with Colin and Gerry, who played “Jazz in the Garden”. The following weeks featured live acoustic music with Alan Bolt, including Folk, Country, 1950s and 60s, a Ukulele Band, and finally Michelle and Ian Wright, winners of the Lincolnshire Folk Song Competition 2015. The Museum Directors are delighted that the musical events have been able to go ahead this year.



Mike Warwick plays the first “Music in the Garden” in 2016

In 2018, we were invited to send in award applications to the Lincolnshire Heritage Forum and we entered “Music in the Garden” in the “Best Event” category. Unfortunately, the awards were cancelled, so we don't know whether we would have won. Nevertheless these musical events continue to be popular with visitors and the local community alike.

Due to Covid concerns, this year we moved the serving of refreshments outdoors which worked well. Refreshments were free, except on Heritage Open Day, being covered by the Lottery Grant, though people did make donations as they left. Cakes were made and provided by Museum volunteers, with gluten free options available. The cost of staging the musical events and refreshments was supported by a grant from the National Lottery Community Fund which paid for the extra awning costing £600 and cafe equipment that can be used for future events. It also allowed us to offer all the “Music in the Garden” entertainers, who gave their time and talents for free, a contribution towards their travel expenses, so a big thank you to all the National Lottery players for their help towards these costs.

The musical events were arranged by the Friends Committee, supported by well organised Museum Directors, Friends, volunteers and staff who all cheerfully worked hard before, during and after each concert. This included cake bakers, those erecting awnings, setting out chairs and



Large audience for “CATS” in August 2021

tables, serving refreshments, preparing the garden, supplementing seating requirements, collecting donations, doing sundry other tasks and clearing up afterwards. It showed a wonderful community spirit and ensured that all those who attended one or more of the concerts had a very enjoyable afternoon. A big thank you and ‘well done everyone!’ from David Hill, the Museum Chairman to all who helped to make the events such a success. This year we had our biggest audiences yet, so the future looks bright for these popular events to continue well into the future. A review of each of this year's concerts with numerous photographs can be seen on the

Cottage Museum website www.cottagemuseum.co.uk.



Moorland Service Station

Fuel & Convenience Store
Horncastle Rd, Woodhall Spa LN10 6UX Tel: 01526 354333

- Groceries
- Hot & cold drinks
- Logs/kindling
- Jet Wash
- Charcoal
- Bottled Gas





- Disposable BBQs
- Motor Supplies
- House Coal
- Snacks
- Ice cream
- Sandwiches

INSURANCE THAT'S ON YOUR DOORSTEP

Having a local office means we're accessible, whether you need to make changes to your policy or make a claim.

We can help you insure your:

- Home & Car
- Horse & Horse box
- Business
- LGV & Commercial Vehicle

For a real conversation about your insurance call or pop in

The Old Mill, Roughton Moor, Woodhall Spa,
Lincolnshire, LN10 6YQ | 01507 522345



Our Agents are appointed representatives of The National Farmers Union Mutual Insurance Society Limited (No. 119972). Registered in England. Registered Office: Tiddington Road, Stratford upon Avon, Warwickshire, CV37 9BL. Authorised by the Prudential Regulation Authority and regulated by the Financial Conduct Authority and the Prudential Regulation Authority. A member of the Association of British Insurers.

Underwoodhall

Jewellery and Antiques



**The Broadway, Woodhall Spa.
01526 353815**

**7 TOOLS,
1 BATTERY**
STIHL's new range of cordless garden power tools offers unparalleled performance and convenience.

At the cutting edge of battery-power technology.

STIHL **VIKING**

For full sales and service of STIHL & VIKING products:
CHARLES H. HILL LTD
Moor Lane, Horsington,
Woodhall Spa, Lincolnshire
www.charleshill.co.uk
Tel: 01526 388281

Withamview
VETERINARY SURGERY

We are an independent small animal practice owned and run by two vets with over 20 years of combined experience. We provide our own out-of-hours service to ensure that there is a familiar face when you need it most.

- * 10% discount on consults for service families.
- * Pet Health Plans available.

please contact us, or visit our website for further information.
www.withamviewvets.co.uk

OPEN NOW
MON - FRI 8:30am - 6pm
SAT 8:30am - 12pm
01526 268060
enquiries@withamviewvets.co.uk

29 Alexandra Road
Woodhall Spa
Lincolnshire
LN10 6RE

01526 352538

**LUNCH & DINNER
WED - SAT
12 - 2 pm & 6 - 8.30 pm
CLOSED ALL DAY
MON & TUE**



**SUNDAY
LUNCH
12 - 3 pm**

**ABBEY LODGE INN - KIRKSTEAD
WOODHALL SPA**

DON'T BE DISAPPOINTED!!

REMEMBER TO BOOK YOUR TABLE FOR YOUR NEXT VISIT

**WEDDINGS ANNIVERSARIES BIRTHDAYS
MEETINGS DINNER DANCES BUFFETS
OR OTHER SOCIAL FUNCTIONS**

OUR MONK'S ROOM HOLDS 100 - 150 PERSONS

**R. ARNOLD
Funeral Directors**

Independent Family Funeral
Directors Est 25 years.

**Newly opened in Louth
161 Newmarket, Louth LN11 9EJ
01507 608200**

Lincoln - 01522 542701

Mablethorpe - 01507 473100

Sutton-on-Sea - 01507 442300

Alford - 01507 463200

Woodhall Spa - 01526 341707

We take care of the smallest of details with
compassion and dignity, we personalise
every service for each family.



NHP

WHOLESALE, RETAIL & FREE HOME DELIVERY SERVICES

FIND US AT OUR SHOP IN WOODHALL (5 WITHAM ROAD),
AND AT OUR SHOP IN CONINGSBY (54 HIGH STREET).

LIKE US ON FACEBOOK- NHP of Sibsey.

YOU CAN CALL US ON **01526 344226**, TO PRE ORDER YOUR
FRUIT BASKETS, FLOWERS, 25KG POTATOES AND VEG ORDERS
OR CONTACT US ON FACEBOOK.

WE OFFER A HUGE VARIETY OF FRESH LOCALLY GROWN
PRODUCE AS WELL AS OTHER FIRST-CLASS PRODUCE. THERE
WILL ALSO BE PUMPKINS, CHRISTMAS TREES AND HOLLY
WREATHS AVAILABLE.



Woodhall Spa Cottage Museum

Woodhall Spa - November 1921

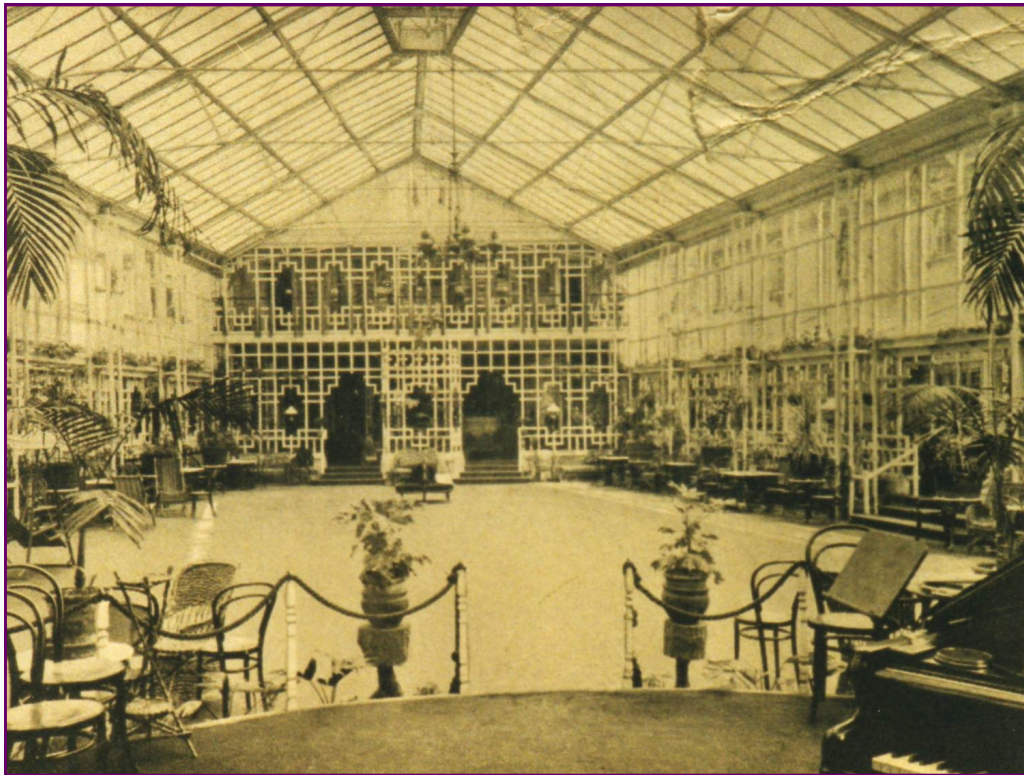
Dear Readers,

Perce says that a count of people in the land, has found 1,635 persons residing in Woodhall Spa, which, he says, is 151 more than in 1911. Of course, in the height of the Season hundreds more than that are living in our village.

This year there were several sporting events with spectators coming from all around, almost like those happy years before the Great Conflict.

The Woodhall Spa Athletics Sports were held in June on Sir Archibald Weigall's cricket ground off Stixwould Road. He is a devotee of the game and gave the land to the village some years ago. National Rules were applied and there was over £80 in prizes! There was a record of 285 competitors, including a cyclist who had been a member of last year's Olympic team! The newspaper reported that the whole countryside flocked to the spa, which is, of course, a reporter's nonsense but there were indeed, many witnesses present.

The occasion was enlivened by a Military Band and there were light-hearted events like musical chairs on bicycles and even motor bicycles! There was also an Animals' Race when two gentlemen with frogs, sadly, failed to get their charges off the mark.



The Winter Gardens at The Royal Hydro Hotel

The Sports were followed by a dance in the Winter Gardens (admission two shillings.) Dancing often follows such events and after our Annual Bank Holiday Monday Fete on 1st August, there was dancing on the lawns of Petwood, not for the likes of us, of course but oh, imagine - a warm summer evening, that beautiful house, fairy lights among the trees, champagne and laughter, ladies in their swirling gowns, it must have been so romantic!

Perce said the dancing would not do the grass any good.

Bertha

November 1921

Marjorie Sargeant

EBRINGTON ARMS

MAIN STREET KIRKBY ON BAIN LN10 6YT



Food is served Tuesday to Sunday
between noon and 2pm and 6pm - 9pm
Sunday Lunch available noon - 2pm



A family run traditional pub restaurant
serving good home cooked food
with a selection of cask and keg
ales.(CAMRA Good Beer Guide)
3.5 miles from Coningsby
and 2 miles from Woodhall Spa.

Families, children and dogs welcome.
The bar has a warm coal fire in winter.
Outside the patio area is covered
ensuring a dry seat whatever the
weather and the pleasant beer garden
has a gazebo and children's play area.

All Year Round -
A great place to eat and
drink!
Always advisable to book
Telephone 01526 354560

Petwood

Wine, dine and relax

Set in the heart of Lincolnshire, The Petwood Hotel is a perfect base for exploring the county's coast, the Wolds, aviation heritage sites and the historic city of Lincoln



For best available rates please call us on 01526 352411 or email reception@petwood.co.uk

Petwood Hotel, Stixwold Road, Woodhall Spa, Lincolnshire, LN10 6QG

www.petwood.co.uk





POPPY'S PAGE

Hi Everyone - Hope you have all had a great summer, now we all have so much more freedom. I hope you enjoy reading Holly's experiences of volunteering at the museum and are inspired to try it for yourself. We have a great puzzle for you this month all about Bats - enjoy, Happy Christmas and Happy New Year! Bye for now, Poppy



A Young Volunteer's Experience at the Museum

This summer, I've spent some time volunteering at the museum, and I've really enjoyed it. I saw the museum advertising for new volunteers and I decided to come and help because I wanted to expand my knowledge of the history of the village I've grown up in. I'm also really interested in History, and I'd love to study History and Politics at university so this was the perfect summer job for me!

I started off in June 'meeting and greeting', and I found it really rewarding when visitors were grateful for my knowledge and I'd encourage anyone thinking of volunteering as a 'meeter and greeter' to go for it! Many of them also told me fascinating stories about themselves, and a lot of people remarked how nice the Wield family room was because it smells like their Grandma's house. When more of the other volunteers began returning, I learnt how everything worked in reception and tourist information. In my last few weeks, the collections team was kind enough to let me help out in the archives on Thursday mornings. It was a fantastic insight into what goes on behind the scenes, and it was such a great feeling when we found items that were thought to be missing. On my last day we even got to sort through some items recently donated to the museum, which included ornaments from Effie and Charles' wedding cake!

I'd especially like to thank Kelly and Tracie for helping me get so much out of volunteering here, and Patzi for sharing her fountain of knowledge with me; there was always a new fact about Woodhall every week! Also, thank you to Tom, Pauline, Christine and Heather for letting me go behind the scenes in the archives; I found it so interesting and it really opened my eyes to the hard work and dedication that keeps the museum running. It's been lovely to see the museum thriving as we reopen from Covid and I hope to see you all again next year!



*Holly Bradbury
Bell Award Winner*

Holly Bradbury

E	N	I	T	O	R	E	S	L	Y	V
B	L	O	N	G	V	N	O	F	F	S
M	U	L	Y	E	K	U	C	B	O	X
T	H	W	E	A	N	C	Z	A	Y	T
H	O	F	L	R	O	O	S	T	I	S
S	R	E	R	E	T	T	A	N	G	O
H	S	M	N	D	Y	S	E	N	G	N
O	E	W	T	H	R	P	I	J	Y	A
E	L	X	A	V	P	W	M	P	L	R
R	B	C	S	T	C	E	S	N	I	N
H	I	B	E	R	N	A	T	E	M	P

BATTY WORD SEARCH

The last children's trail in the Museum was 'The Bat Detective Trail', so here is an 'all things batty' word search for you to work out.

Can you find the hidden words? They are horizontal, vertical, diagonal and sometimes backward.

**PIPISTRELLE NATTERERS LONG
EARED HORSE SHOE SEROTINE
INSECTS WINGS ROOST BAT BOX
HIBERNATE SONAR**

There are at least 18 species of bat in this country and the word search has named 5 of those. You can investigate to find out the names of the other bat species.

Puzzle set by Jane Hodgson



WILLOW HOLT

Caravan & Camping Park

- **TENTS & CARAVANS**
- **STATIC HIRE & SALES**
- **ACCESSORY SHOP**

LODGE ROAD, TATTERSHALL. LN4 4JS

TEL: 01526 343111

The Friends of the Woodhall Spa Cottage Museum

Committee: John Wilkinson
Annette Southcott

Membership Secretary: Judy Everitt

Dear Friends

At last we have managed to meet up!

It's been a long time, so it was great to see so many of you at the recent Tea and Cake event which we have had to postpone so many times.

Good to welcome many of our volunteers too and give us the opportunity to say a big thank you for all your support over the last eighteen months. The Music in the Garden sessions were a great success thanks to the many people who helped out with baking fantastic cakes, setting up equipment, helping in the kitchen and Museum and all the other things that go on behind the scenes to make the occasion successful. You are all stars!

We will soon be closing for the year, but our final get-together is something to look forward to.

This year the annual memorial lecture is a talk on 'Lancasters, Lincolnshire and the International Bomber Command Centre' by Air Vice-Marshal Paul Robinson OBE FRAeS to be held at the Golf Hotel on 13 November at 2.30pm. Tickets are £8 to include refreshments and there will also be raffle with some great prizes. They can be obtained from the Museum during opening hours or online www.cottagemuseum.co.uk As always, we hope you will support this prestigious event.



Friends & Volunteers enjoy the Tea and Cakes

Come and Join Us

The backbone of the Cottage Museum is our volunteers and some of them are putting a lot of hours in and could really do with a hand. Can you help? Do you have a few hours to spare in the month? It does not have to be a massive commitment. There are numerous opportunities to suit most interests. If you would like to find out more without committing yourself then please call us on

01526 352456



What's On Guide

Events planned for this year
but subject to change
dependant on Covid
restrictions

-0-

Annual Memorial Lecture
Lancasters, Lincolnshire and
The International Bomber
Command Centre

Air Vice-Marshal Paul Robinson
13th Nov at 2pm – Golf Hotel

-0-

For the latest information visit
www.cottagemuseum.co.uk
& www.woodhallspa.org

It's hard to believe that we are almost at the end of 2021. How did that happen? I think I can speak for us all when I say that we are looking forward to a more 'normal' life next year.

We will continue with the monthly coffee mornings during the winter months as long as the public health situation allows and we feel that it is safe to do so. In the meantime, we wish you a happy festive season and above all, good health for the year ahead.

Annette Southcott

