

# Woodhall Spa Cottage Museum



The Newly Re-Decorated Museum Building

Newsletter No. 38  
July 2021



# Woodhall Spa Cottage Museum

## A Note from the Editor

The Season has got off to a very promising start and we opened as hoped on Thursday May 20th. Since then nearly twice as many visitors have come compared to the same period in 2019, when we were open every day, but for an hour less per day. This year we have been open for 4 days per week plus the Bank Holiday Monday and the extra hour per day. Interestingly we have had a lot more children visit and the Children's Spring Trail, devised by Jane Hodgson, has been a very popular attraction. Lynnette Needham has commented that "members of staff are coping very well with the increased numbers and are following the regulations". We are now awaiting the final date for social distancing restrictions to be "fully" relaxed so we can re-introduce admission charges and offer visitors the "full visitor experience".



The week of 1st - 7th June was "Volunteers Week - an annual celebration of the contribution that millions of volunteers make across the UK". This provides a perfect opportunity to thank formerly all those who volunteer at the museum and without whom it would be impossible for the museum to function. This also, of course, includes all the directors, who are volunteers as well. In the last few weeks, as Covid restrictions have been lifted, more and more volunteers have returned to the museum and they are very happy to be back, helping with the various tasks, with smiles on their faces - it feels like we are starting to get back to normal.

The museum has taken part in the National Lottery Open Week to thank National Lottery players for their support and the museum offered one free guide book (per group) "A family home for 100 years" on the 12th & 13th June. To take advantage of the offer visitors had to offer proof of purchasing a Lottery ticket.

We now know the date for phase 4 of the "Road Map" has been put back to July 19th. which hopefully means our summer plans can still go ahead as planned. Do have a lovely summer.

**Philip Groves**

### Front Cover Story

Over the enforced closure due to Coronavirus, the exterior of the museum has been completely re-decorated, together with John Wield's Darkroom. The fences, gates, gate posts and all paving slabs have also been cleaned.

### In this Issue

Page 3	Events planned for 2021	Page 12	What Our Visitors Are Saying
	National Lottery Grant	Page 15	175 Club Winners
Page 4	Walk, Talk & Tea at Petwood	Page 16	Bertha, July 1921
Page 5	Meet Bob Smith Our IT Manager	Page 18	Poppy's Page
Page 8	From the Collection	Page 20	The Friends' Page
Page 9	From the Collection continued		

### The Newsletter Committee

Chairman - Paddy O'Neill Editor - Philip Groves Marjorie Sargeant

To contact the Newsletter Team please write to:-

The Cottage Museum, The Bungalow, Iddesleigh Road, Woodhall Spa, Lincs. LN10 6SH

or email [philanddeliagroves@gmail.com](mailto:philanddeliagroves@gmail.com)

Reg. Charity: 1114268 Reg. Museum: 1929

### Events Planned for 2021

As we continue to come out of the Lockdown measures it does look increasingly hopeful that a number of the events we have been planning are going to happen. Events such as the Woodhall Country Show, the 40s Weekend and the 10K run which we were to have been involved with have all been cancelled, but from August onwards things look far more promising.

A full programme of “Music in the Garden” concerts on the five Sunday afternoons of August, plus the afternoon of the Heritage Open Day on September 19th, are expected to take place. Musicians have been booked and the line up is as follows:-

Aug 1st - Colin and Gerry (Trad. Jazz)

Aug 8th - Sing It Loud (Singing Group)

Aug 15th - Mike Warwick (Songs from the 50s to 90s)

Aug 22nd - Between the Lines (Lincolnshire Folk Group)

Aug 29th - CATS, the Coningsby & Tattershall Strummers (Ukulele Group).

There will also be a concert given by the Spalding Folk Group on Sunday September 19th to coincide with Heritage Open Day at the museum, when admission to the museum will be free. It is hoped to have the Patio Cafe open for this event. All these concerts start at 2pm and are free, including a free drink at the interval, though you will be able to make a donation if you wish.

Later in the year the Annual Memorial Lecture is being held at The Golf Hotel on the afternoon of Saturday 13th November. Subject is The International Bomber Command Centre at Lincoln and the talk is being delivered by Air Vice Marshall Paul Robinson.

The Victorian Christmas event will be held this year over the last weekend of November and first weekend of December. More details in the next Newsletter.

**Philip Groves**

### National Lottery Grant

Last year the museum was given a National Lottery Grant of £1000 towards the staging of the “Music in the Garden” events planned for the summer of 2020. Because of the Coronavirus restrictions in place last summer it was not possible to use the grant and we were given an extension to use it



by 31st August of this year. This has worked out really well for the “Music in the Garden” Sundays and allows us to provide free entertainment and free drinks, which will be provided outside, so that people will not be crowded together in the Community Room whilst queuing for refreshments.

A new popup awning has been ordered with the Community Fund Logo displayed on it and will provide much needed additional space under cover for audiences. People who attended the 2019 season will remember that many of the afternoons were very well attended and it would be nice for more people to be able to shelter from the sun or the rain!

In addition to the additional awning, free bunting, banners and flags have been ordered from the Community Fund, which will give the afternoons more of a party atmosphere. Four dozen Polycarbonate glasses have also been purchased from the grant for use outside.



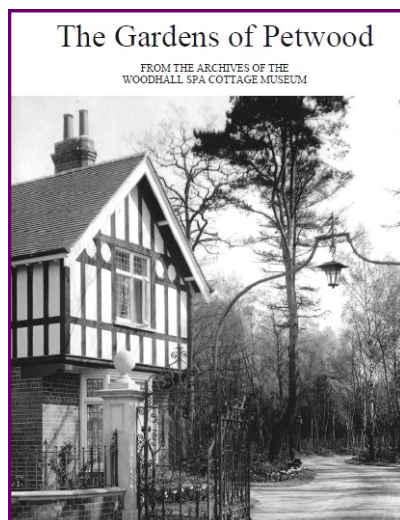
## Woodhall Spa Cottage Museum

### Walk, Talk and Tea at Petwood



*The gardens in their heyday looking from the round pool to the house*

The weather was not too kind and at the end of the walk, as the group approached the terrace, it rained heavily. Tea was gratefully enjoyed inside with good views of the gardens. The managing director, Emma Brealey, made a point of visiting the group and welcoming them to Petwood.



*Petwood gardens taken during the walk by Ken Hollamby*

It was pleasing that the rhododendrons were showing their colour, both north and south. We hope the insight on the history of the grounds will encourage our Friends to return and explore more areas in better weather. The book is still available to purchase as a softback, price £25.

**Patricia Duke-Cox**

### Volunteer Coffee Mornings

A coffee morning is normally held bi-monthly to enable volunteers from the various teams to meet each other and to meet some of the Directors. It affords a great opportunity to exchange ideas and make suggestions, or just have a general chinwag! It is planned to resume this event from Wednesday 4th August, 1st September and 5th October, so please check our website, or social media for the latest information.



### Meet Bob Smith our IT Manager

I am Robert Smith (Bob), IT Manager at Woodhall Spa Cottage Museum

I lived in Chiswick, West London, until I was 38 then moved to Uxbridge until I retired. My wife (Trish) and I moved to Woodhall Spa in 2011. Trish was born and raised in Lincolnshire and her family still live here.

My hobbies were skiing, gliding and travelling. I now enjoy travelling, most recently in Canada, whilst Trish and I have a Motorhome in which we have toured all around the UK and Europe (when allowed).

I started my career as a GPO telephone engineer apprentice in 1965 and I worked at Belgravia Telephone exchange, London. Promoted to Technical Officer, as a Private Automatic Branch Exchange engineer, I worked for many large companies (BA, British Steel, National Coal Board, and many others including embassies).

I trained as an electronics engineer to look after an IBM PABX; which was one of the first electronic telephone exchanges. Given the job of IBM Technical Support at BT's London's regional HQ, I transferred to BT HQ to work on the IBM National technical support team working all around the UK on high level complaints.

In 1992 I transferred to West London as a maintenance engineer and retrained as a Nortel Meridian PABX engineer as a Field Specialist Engineer resolving high level complaints until my retirement in 2008.

I was asked to help at the Museum to look after the computers, fire alarms and help out when required whilst Nigel had a stay in hospital. I carried on at the Museum after Nigel returned and we have formed a successful team working on numerous problems together.



*Bob Smith, Museum IT Manager*

### **175 Club Winners**

#### **April 2021**

£25 [10] Lucy Hibberd  
£20 [81] Jean Hill  
£10 [38] Kate Roberts  
£10 [42] Martin Fearn

#### **May 2021**

£25 [164] Steve Berry  
£20 [1] David Radford  
£10 [23] Chris Burgin  
£10 [4] C. Hibberd

#### **June 2021**

£25 [111] Gill Hodgson  
£20 [93] Ruth Gordon  
£10 [167] Stella Arden  
£10 [169] Stella Arden

The Museum utilised a server with several desktop PC's. Users would have to come to the museum to update their records on the server. This system worked well but was out of date and needed modernising. Liaising closely with our IT partners at SCS, we have upgraded to a cloud-based storage system which is compatible with remote working. Additionally the reception team have migrated to a fully Electronic Point Of Sale system, which enables all sales and stock control to be far more manageable.

This plan pre-empted COVID-19 and the upgrades now allow volunteers to work from home. We removed the redundant PC's (donating hardware to other needy charities) and the server, thus saving on electricity and maintenance costs and has generated extra desk space for users. A win win for the museum.

**Bob Smith**



Visit  
**OAKLANDS~GRANGE PARKS**

**Horncastle Road, Woodhall Spa**



A private park home estate offering both security and peace of mind. Developed to the highest standards with homes at affordable prices. You can be assured of a warm welcome.

Visit our new website on  
**[www.oaklandsgrangeparkhomes.com](http://www.oaklandsgrangeparkhomes.com)**  
or for further details ring Heather Shepherd on  
**01526 352312**  
or email: [oaklandsgrange@live.co.uk](mailto:oaklandsgrange@live.co.uk)

or just “drop in”



**WATERMAN CARAVAN SERVICES**  
**FULLY QUALIFIED CARAVAN & MOTORHOME**  
**ENGINEER**  
**BASED IN HORSINGTON**

**FULLY MOBILE**

**\*FULL SERVICING**  
**\*HABITATION SERVICING**  
**\*UNDERGEAR SERVICING**  
**\*GAS QUALIFIED AND CERTIFICATES PROVIDED**  
**\*DAMP REPAIRS**  
**\*ACCESSORY DEALER**

**TEL: 01526388350**

**MOB: 07824778357**

**EMAIL: [david.waterman6@btinternet.com](mailto:david.waterman6@btinternet.com)**

**[WWW.CARAVANSUPPLIESINTERNATIONASHOP.COM](http://WWW.CARAVANSUPPLIESINTERNATIONASHOP.COM)**

**DECORATING**  
**SERVICES**

**Professional Painting**  
**and**  
**Decorating Company**

*Operating for*  
*over 20 years*

Woodhall Spa Office 01526 568568

Horncastle Office 01507 834568

During 09:00am to 5:00pm

or email:  
[decoratingservices8000@gmail.com](mailto:decoratingservices8000@gmail.com)



# TEA HOUSE IN THE WOODS TEA HOUSE & RESTAURANT

Woodhall Spa's Oldest Tea Rooms

Open Tuesday - Sunday from 10am

Offering homemade cakes, lunch & traditional afternoon teas


Food available all day

Evening restaurant menu from 5.30pm

Coronation Road, Woodhall Spa, Lincs. LN10 6QD 01526 354455

[www.teahouseinthewoods.co.uk](http://www.teahouseinthewoods.co.uk)

## GRAHAM FIDLING Traditional BUTCHERS

[woodhallbutcher.co.uk](http://woodhallbutcher.co.uk) • 

7 The Broadway, Woodhall Spa, LN10 6ST

☎ 01526 352196 • 📱 07866805594

Local traditional butcher selling a wide variety of meats, reared locally on the outskirts of Horncastle. Cooked meats, a selection of pies and condiments.

Also selling Lincolnshire specialities, including award-winning Lincolnshire sausage, stuffed chine and pork and apple burgers.

Orders taken for pubs, tea rooms, restaurants, schools, hotels and care homes. Orders can also be made by phone and delivered free of charge within 10 miles!



## Toni O'Neill

Member of The Society  
of Floral Painters



Commissions Undertaken for  
Floral Paintings in Watercolour  
in Memory of Your Special Occasion  
or Flowers from your Garden

For more information call 01526 354982  
or e-mail [oneill\\_t3@sky.com](mailto:oneill_t3@sky.com)



### From the Collection - HARVEST

This is the time of year that farmers turn to getting in the crops. Nowadays, of course, it is totally mechanized, but in the 20th century it was still a labour intensive procedure.

In the Museum's archive there are a number of images of harvesting from the past and it is some of these that we will see in this newsletter. Harvest is an old English word meaning 'autumn' relating to the time when all is gathered in. It involves cutting the cereal and then obtaining the grain from its covering or husk.



Until the 1850s cutting the crop was done manually with a scythe. There then appeared the horse-drawn sail reaper/binder (left) which cut the crop and bound it into bundles or sheaves. 3-4 sheaves were then stood together in the field to dry in the sun as stooks (below). The grain had then to be separated from the plant, known as threshing.



Originally done close to a barn but later in the field, with the advent of threshing machines. To get to the barn the sheaves were loaded onto wagons (right).





## From the Collection continued

Once at the barn threshing used to be done by hand (flailing) but later horses were used to operate ingenious machinery to crush the grain on the barn floor (right).



Finally, after separating the kernal from the husk (winnowing), the grain went to the miller for turning to flour.

Nicholas Duke-Cox

## Community Room for Hire

At the Cottage Museum

Very reasonable rates:

Morning, afternoon, evening or all day rates.

Maximum number of people 16

(dependant on Covid Restrictions)

For further details and bookings please contact:

[info@cottagemuseum.co.uk](mailto:info@cottagemuseum.co.uk)

## Woodhall Spa Cottage Museum

### India Village

15 The Broadway  
Woodhall Spa  
Lincolnshire LN10 6ST  
Tel: 01526 352223/354657



**Opening Times**  
Midday - 2.00pm  
5.30pm - 11.30pm  
7 Days a Week

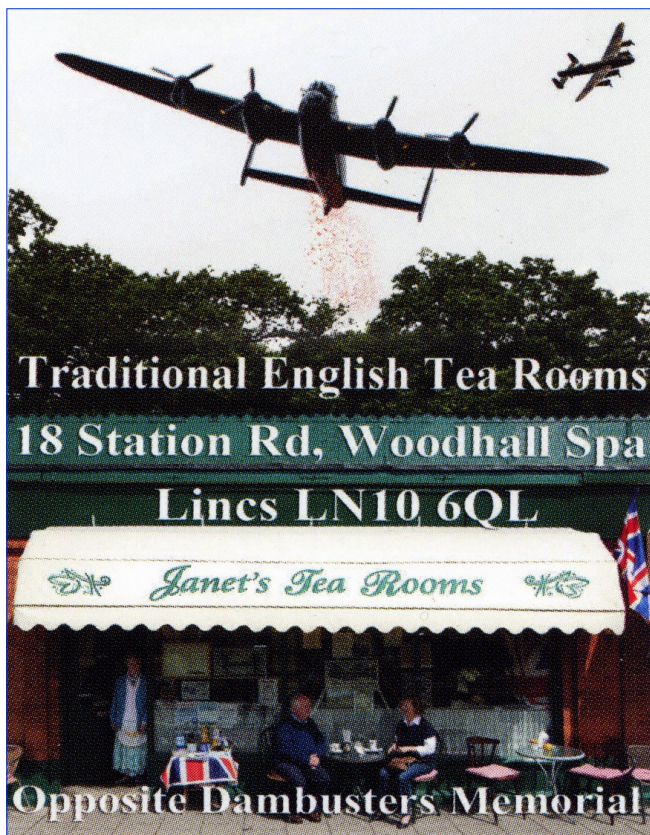
**10% Discount  
on Take-Aways**

*For the Best Indian  
and  
Eastern Dishes*

fashion by  
**rieker**  
ANTISTRESS®



**PETER SCOTT**  
**1 The Broadway**  
**01526 353935**  
*Open 7 days*



### THE MELROSE

BROADWAY CENTRE WOODHALL SPA

A warm friendly family run  
business hidden away at the  
bottom of the Broadway Centre,  
serving back to basics,  
home-cooked foods using  
local produce.

Open 9am Monday - Saturday

**Breakfasts**  
**Home cooked lunches**  
**All day menu**

**TEL 07983638246**  
**OR**  
**07930878803**





## PREMIER PET CARE

QUALITY PET FOOD  
AND ACCESSORIES

PROFESSIONAL FRIENDLY  
SERVICE AND ADVICE

STOCKISTS OF ALL MAJOR  
BRANDS PLUS EVERYTHING  
AVAILABLE TO ORDER

FREE LOCAL DELIVERY

**01526 352626**

Unit 1, The Broadway Centre, The Broadway  
WOODHALL SPA, Lincs. LN10 6ST  
[mail@premierpetswoodhallspa.co.uk](mailto:mail@premierpetswoodhallspa.co.uk)  
[www.premierpetswoodhallspa.co.uk](http://www.premierpetswoodhallspa.co.uk)

## Grimsby Town Fish Products

**on The Mall car park**

**every Friday morning  
9.00 - 10.00 am**

**for HOME DELIVERIES**

**ring JOHN on 07708 596982**

## Tim Fry

Traditional Signwriter

Signwriter with over 35 years experience

- Vintage Vehicles
- Commercial Vehicles
- Trailers & Curtain sides
- Narrow Boats
- Shop Signs, Sign boards
- House Signs
- Banners & Shop Canopys
- Exterior & Interior Walls

Please visit my website at.....  
[www.timfrysignwriting.uk](http://www.timfrysignwriting.uk)

Instagram... @timfrysignwriting.uk

**01526 354492**  **07810 351511**



Luxury caravan available for hire at Kelling Heath  
Holiday Park, near Sheringham, North Norfolk in an  
Area of Outstanding Natural Beauty.

Situated on individual secluded plot on the edge of  
woodland and overlooking heathland.

A few minutes walk from Park facilities.  
6 berth, 2 bedrooms, 1 en-suite, 1 family shower room.

Available March to November inc., Reasonable rates.

Check out all Park facilities online at

[www.kellingheath.co.uk](http://www.kellingheath.co.uk)

For enquiries please telephone Mike & Lynda Hewson  
on 01526 388680 / 07949 031818

## Woodhall Spa Cottage Museum

---

### What Our Visitors Are Saying

With all the Covid restrictions, the traditional Visitors Book could not be used last year and so most of the feedback we have received has been through various Social Media platforms, such as TripAdvisor. Nigel Webb who looks after our website and sees all these comments has picked some out for us to share with you.

#### Review by morice uk

*Had a lovely couple of hours here, very informative with lovely old photographs. Learned so much about the Dambusters who were stationed in Woodhall Spa. Great to learn about the local families and to see from family photo's how they lived. Well worth a visit.*

#### Review by Carol B

*The Cottage Museum was a joy to explore and was packed with intriguing stories and displays about Woodhall Spa, the local area and the Wield family, who lived in the building from 1887 until the 1960s.*

*My husband and I spent over two hours mooching round this wonderful and interesting museum, we took lots of photographs of some of the exhibits as we found them interesting. We also picked up a leaflet on 'The Woodhall Spa Heritage Trail', which took you on a tour of the spa village pointing out all the points of interest. My husband and I then decided to do the 'Heritage Trail' walk which was very interesting.*

*If you want to learn about wonderful people and learn about the history of Woodhall Spa then this is certainly the place to visit. The museum is free, but we made a donation of five pounds and would suggest that you do the same if you find the place as interesting as we did.*

#### Review by Sharon4G Unexpected Visit

*We stumbled across this museum on a recent visit to Woodhall Spa, this also is the tourist information centre. The volunteers working there are so welcoming and informative. It was nice to learn the history of the village after many visits there. I'd recommend an hour there.*

#### 40somethingtourist Tiny museum but really good exhibits

*We found this tiny museum by accident but really enjoyed looking at the exhibits. It is decorated in the fashion of the time and really made you think about how much life has changed in the last 80 years.*

#### Review by Lisa Lovely little Museum, very interesting

*We visited as a family and although it doesn't fill a great deal of time it's definitely worth a visit. Very interesting and the volunteers are extremely helpful. Interactive items as you go round which even our teenager tried. Head into the woods afterwards for a lovely walk.*

#### Review by Chris W, Norfolk So friendly; so interesting

*Run by lovely volunteers. Doubles as a tourist information point. Gives a good photographic summary of the town's history. Dog friendly, unlike Petwood Hotel. Definitely worth a brief visit, and a donation.*

*PS. and despair how a 1880's prefab is still habitable yet current new builds....you can guess the rest !!*

Philip Groves





littleloafbakery



littleloafbakery



Breads and loaves that incorporate Parisian and Scandinavian flavours and techniques

Products baked fresh on the morning of delivery

Delivery straight to your door just £2



hello@littleloafbakery.co.uk

07872 891335



## INSURANCE THAT'S ON YOUR DOORSTEP

Having a local office means we're accessible, whether you need to make changes to your policy or make a claim.

We can help you insure your:

- Home & Car
- Horse & Horse box
- Business
- LGV & Commercial Vehicle

For a real conversation about your insurance call or pop in

The Old Mill, Roughton Moor, Woodhall Spa,  
Lincolnshire, LN10 6YQ | 01507 522345



Our Agents are appointed representatives of The National Farmers Union Mutual Insurance Society Limited (No. 119962). Registered in England. Registered Office: Tiddington Road, Stratford upon Avon, Warwickshire, CV37 7BL. Authorised by the Prudential Regulation Authority and regulated by the Financial Conduct Authority and the Prudential Regulation Authority. A member of the Association of British Insurers.

# Underwoodhall

Jewellery and Antiques



**The Broadway, Woodhall Spa.  
01526 353815**

**7 TOOLS,  
1 BATTERY**  
STIHL's new range of cordless garden power tools offers unparalleled performance and convenience.

At the cutting edge of battery-power technology. **STIHL** **VIKING**

For full sales and service of STIHL & VIKING products:  
**CHARLES H. HILL LTD**  
Moor Lane, Horsington,  
Woodhall Spa, Lincolnshire  
[www.charleshill.co.uk](http://www.charleshill.co.uk)  
Tel: 01526 388281



We are an independent small animal practice owned and run by two vets with over 20 years of combined experience. We provide our own out-of-hours service to ensure that there is a familiar face when you need it most.

- \* 10% discount on consults for service families.
- \* Pet Health Plans available.

please contact us, or visit our website for further information.

**[www.withamviewvets.co.uk](http://www.withamviewvets.co.uk)**

## OPEN NOW

MON - FRI 8:30am - 6pm  
SAT 8:30am - 12pm

**01526 268060**

[enquiries@withamviewvets.co.uk](mailto:enquiries@withamviewvets.co.uk)

29 Alexandra Road  
Woodhall Spa  
Lincolnshire  
LN10 6RE



**01526 352538**

**LUNCH & DINNER  
WED - SAT  
12 - 2 pm & 6 - 8.30 pm  
CLOSED ALL DAY  
MON & TUE**



**SUNDAY  
LUNCH  
12 - 3 pm**

**ABBEY LODGE INN - KIRKSTEAD  
WOODHALL SPA**

**DON'T BE DISAPPOINTED!!**

**REMEMBER TO BOOK YOUR TABLE FOR YOUR NEXT VISIT**

**WEDDINGS ANNIVERSARIES BIRTHDAYS  
MEETINGS DINNER DANCES BUFFETS  
OR OTHER SOCIAL FUNCTIONS**

**OUR MONK'S ROOM HOLDS 100 - 150 PERSONS**

**R. ARNOLD  
Funeral Directors**

Independent Family Funeral  
Directors Est 25 years.

**Newly opened in Louth  
161 Newmarket, Louth LN11 9EJ  
01507 608200**

**Lincoln - 01522 542701**

**Mablethorpe - 01507 473100**

**Sutton-on-Sea - 01507 442300**

**Alford - 01507 463200**

**Woodhall Spa - 01526 341707**

We take care of the smallest of details with  
compassion and dignity, we personalise  
every service for each family.



**NHP**

**WHOLESALE, RETAIL & FREE HOME DELIVERY SERVICES**

FIND US AT OUR SHOP IN WOODHALL (5 WITHAM ROAD),  
AND AT OUR SHOP IN CONINGSBY (54 HIGH STREET).

**LIKE US ON FACEBOOK- NHP of Sibsey.**

YOU CAN CALL US ON **01526 344226**, TO PRE ORDER YOUR  
FRUIT BASKETS, FLOWERS, 25KG POTATOES AND VEG ORDERS  
OR CONTACT US ON FACEBOOK.

WE OFFER A HUGE VARIETY OF FRESH LOCALLY GROWN  
PRODUCE AS WELL AS OTHER FIRST-CLASS PRODUCE. THERE  
WILL ALSO BE PUMPKINS, CHRISTMAS TREES AND HOLLY  
WREATHS AVAILABLE.



## Woodhall Spa Cottage Museum

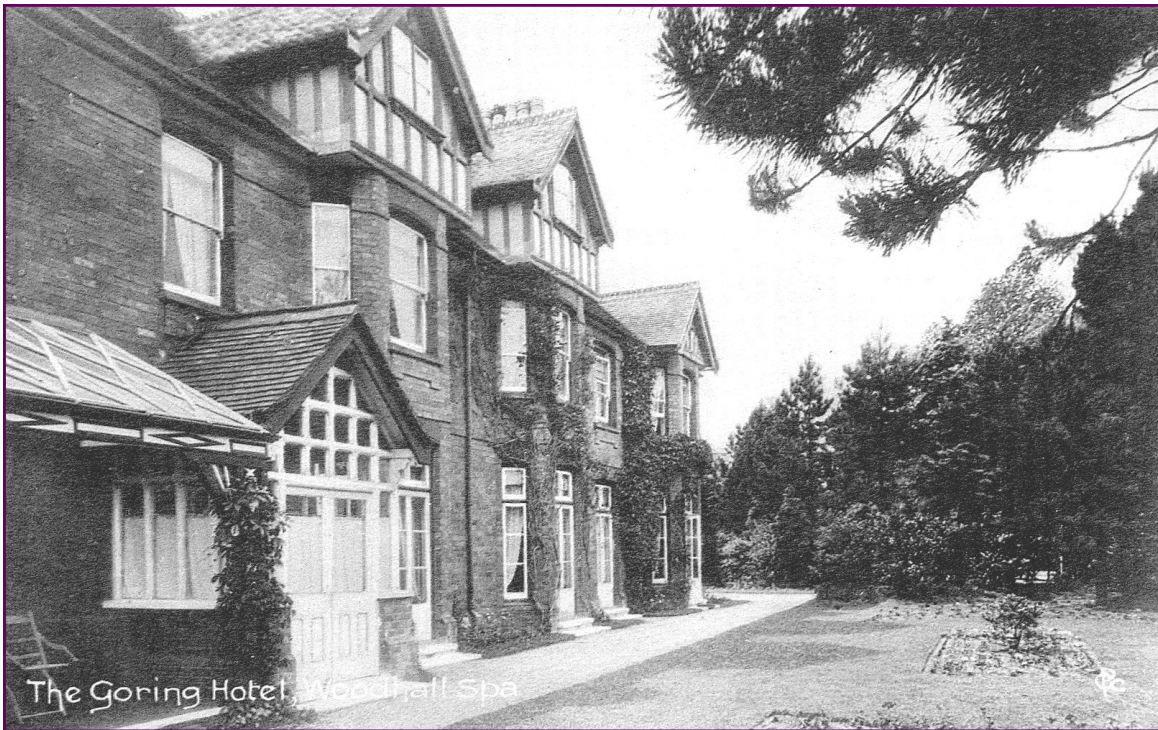
---

### Woodhall Spa - July 1921

Dear Readers,

There are changes in accommodation for visitors to Woodhall Spa this Season. In April, the fine-looking Clevedon Hotel was taken over by Capt. S.V. Hotchkin M.P. and renamed "The Golf." If he manages it as well as his popular golf course, it will do well.

In June, there was a sale of the ruins of the Victoria Hotel, which burned to the ground on Easter Day last year. There were several lots as surrounding land, stables and properties were included. The area looks forlorn without it.



*The Goring Hotel, which later became the Lawson Hotel, re-named The Spa Hotel*

Also in June, the Lawson Hotel, just along Iddesleigh Road from us, was sold. At one time it was a sanatorium run by Dr. Cuffe, when he retired as Superintendent of the Spa Baths. Some 14 years ago it became the Hotel Goring, run by Mr. Alwyn Goring who was German. He and his brother, Otto, were connected to the Meissen porcelain factory in Germany but they came to England to become hoteliers. Well, in 1914 Alwyn, along with other Germans in Woodhall, was forced to leave. It was sad because his brother had taken out British nationality so was able to stay in London. I am told his hotel, close to Buckingham Palace, is very up-to-date and sometimes, if the palace is full, foreign Royalty stay there. Imagine!

Well, we have foreign aristocracy staying in Woodhall Spa too, although not in our humble boarding house, of course. After Herr Goring left, the hotel was named "The Lawson," to get rid of the German connection. They say the new owner is making alterations and is going to call it "The Spa Hotel."

Perce says he hopes it will be pricy because then Iddesleigh Road would be even more desirable and our modest charges very acceptable. Sometimes he is quite bright.

*Bertha*  
*July 1921*

**Author's Note:**-The London Goring was where the Middleton family stayed before the Prince William wedding, but I have not credited Bertha with the gift of prophesy!

*Marjorie Sargeant*



## EBRINGTON ARMS

MAIN STREET KIRKBY ON BAIN LN10 6YT



Food is served Tuesday to Sunday  
between noon and 2pm and 6pm - 9pm  
Sunday Lunch available noon - 2pm



A family run traditional pub restaurant  
serving good home cooked food  
with a selection of cask and keg  
ales.(CAMRA Good Beer Guide)  
3.5 miles from Coningsby  
and 2 miles from Woodhall Spa.

Families, children and dogs welcome.  
The bar has a warm coal fire in winter.  
Outside the patio area is covered  
ensuring a dry seat whatever the  
weather and the pleasant beer garden  
has a gazebo and children's play area.

**All Year Round -**  
**A great place to eat and**  
**drink!**  
**Always advisable to book**  
**Telephone 01526 354560**

## Petwood

### Wine, dine and relax

Set in the heart of Lincolnshire, The Petwood Hotel is a perfect base for exploring the county's coast, the Wolds, aviation heritage sites and the historic city of Lincoln



For best available rates please call us on 01526 352411 or email [reception@petwood.co.uk](mailto:reception@petwood.co.uk)

Petwood Hotel, Stixwold Road, Woodhall Spa, Lincolnshire, LN10 6QG

[www.petwood.co.uk](http://www.petwood.co.uk)





## POPPY'S PAGE

Welcome to the summer issue of Poppy's Page. This time we have tried to give you something completely different and I hope you have some fun discovering as many animals and plants as you can beginning with the right letters. Enjoy the summer holidays as we begin to get back to normal!

Bye for now, Poppy



## The Puzzle is in the Rainbow

Everyone loves to see a rainbow. Here is an activity for you to try. Using the pictures to help with some ideas, can you take each colour in turn that creates a rainbow and find as many things in the natural world that begin with that letter. These can be plants or animals that live on land or in water or things found in the sky or underground.

The rainbow colours always appear in this order. They are RED, ORANGE, YELLOW, GREEN, BLUE, INDIGO, VIOLET.

There is a sentence to help to remember this sequence, "Richard Of York Gained Battles In Vain."

See if you can find at least ten things for each colour.

Have fun!

Gill Noble

## The Rainbow Puzzle



**Rhinoceros**



**Yellow Hammer**



**Badger**



**Vulture**

**RED**

**ORANGE**

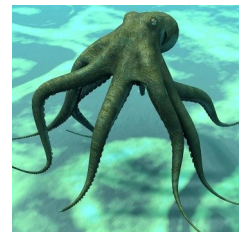
**YELLOW**

**GREEN**

**BLUE**

**INDIGO**

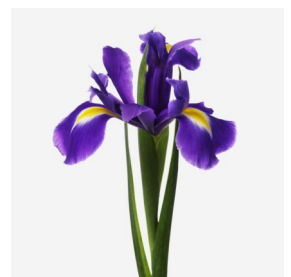
**VIOLET**



**Octopus**



**Geranium**



**Iris**





# **WILLOW HOLT**

*Caravan & Camping Park*

- **TENTS & CARAVANS**
- **STATIC HIRE & SALES**
- **ACCESSORY SHOP**

**LODGE ROAD, TATTERSHALL. LN4 4JS**

**TEL: 01526 343111**

## Newsletter 38 - July 2021

### The Friends of the Woodhall Spa Cottage Museum

**Committee:** John Wilkinson  
Annette Southcott

**Membership Secretary:** Judy Everitt

Dear Friends

At last, it feels as if life is beginning to return to some sort of normality and at the Museum we have been busy preparing for re-opening, although some restrictions are still in place.

On 11 May, we were fortunate to be able to host a virtual talk on "The Railways of Woodhall Spa & Horncastle" by Alan Stennett. to an audience of around fifty people. This was the perfect preparation for the current exhibition at the Museum which commemorates the closure of the local line in 1971 and is well worth a visit.

If all goes to plan, there will be opportunities for Friends to visit the Museum on days not open to the public. At the moment we are looking at the first Wednesday of the month from August to October, although these dates still have to be confirmed. Keep an eye on the website or social media for up to date information.

We also hope to reinstate monthly coffee morning on these dates to enable volunteers from the various teams to meet each other and to meet some of the Directors. After such a long absence there will be a lot of catching up to do!

We have very much appreciated your continued support from memberships fees and donations during this last difficult year which have helped keep the Museum going. You will have received an invitation for tea and cake in the garden on 7 July as a small token of our appreciation. We do hope you will be able to attend.

Finally, the Annual Memorial Lecture is scheduled for 13 November at the Golf Hotel, Woodhall Spa. This year it will be entitled 'Lancasters, Lincolnshire and the International Bomber Command Centre' by Air Vice-Marshal P A Robinson OBE FRAeS. Further details will be sent to you nearer the time. Thanks again for your support and your patience throughout this past year. We look forward to meeting up with you very soon.

**Annette Southcott**

### Come and Join Us

The backbone of the Cottage Museum is our volunteers and some of them are putting a lot of hours in and could really do with a hand. Can you help? Do you have a few hours to spare in the month? It does not have to be a massive commitment. There are numerous opportunities to suit most interests. If you would like to find out more without committing yourself then please call us on

**01526 352456**



### What's On Guide

Events planned for this year  
but subject to change  
dependant on Covid  
restrictions

#### Friends of the Museum Open Mornings

Aug 4th 10-00 to 1.30pm  
Sept 1st 10.00 to 1.30pm  
Oct 5th 10.00 to 1.30pm

-0-

#### "Music in the Garden"

Aug 1st - Trad Jazz with Colin and Gerry  
Aug 8th - "Sing it Loud"  
Aug 15th - Mike Warwick  
Aug 22nd - "Between the Lines" local folk band  
Aug 29th - CATS Ukulele Band

-0-

#### Heritage Open Day

September 19th  
Free Admission to museum  
"Music in the Garden"  
2pm  
Spalding Folk Group

-0-

#### Annual Memorial Lecture Lancasters, Lincolnshire and The International Bomber Command Centre

Air Vice-Marshal Paul Robinson  
13th Nov at 2pm – Golf Hotel

-0-

#### Victorian Christmas

Weekends of  
27/28th Nov & 4/5th Dec  
1 to 4pm

For the latest information visit  
[www.cottagemuseum.co.uk](http://www.cottagemuseum.co.uk)  
& [www.woodhallspa.org](http://www.woodhallspa.org)

