

Woodhall Spa Cottage Museum



At last some normality as the Annual Memorial
Lecture was held at The Golf Hotel

Newsletter No. 40
March 2022

Woodhall Spa Cottage Museum

A Note from the Editor

Here we go again with our pre-season edition of the Cottage Museum Newsletter. The new season is due to start on Wednesday April 6th until Saturday 29th October. This year we will be open on Wednesday, Thursday, Friday and Saturdays between the hours of 10.30am and 4.00pm, with the last admissions at 3.30pm. During August we are also opening on Sundays to coincide with the highly popular "Music in the Garden" events.

We are launching a big drive to attract volunteers to join the happy band of Volunteers and Friends we already have. Lynnette Needham has written an article outlining what we are after on the page opposite and Ivan Lilley has recorded some of his experiences of volunteering with the museum, after he had retired from full time employment. I think the overriding thoughts you can take from both these contributions is the enormous variety of volunteering roles that are available and the personal satisfaction to be gained from being involved in this fascinating enterprise.

A very recent addition to this year's calendar of events is finalising the Spring Talk, which is to be given in the Golf Hotel on Saturday 23rd April. The subject will be "Sir Joseph Banks Hero or Villain of Fen Drainage" and the talk will be given by Dr. Robert Wheeler. Please keep an eye on the website, our Social Media and the local papers for more detailed information as it develops.

This issue contains the usual "From the Collection" feature which this time concentrates on Royal Celebrations, with the Platinum Jubilee coming up. Bertha writes another letter from March 1922 and Marjorie Sargeant has put together a very interesting piece on a little known publication from 1890 called "Axle Cooling". Turn to page 4 to see more! Patricia Duke-Cox gives us a fascinating insight into what goes on behind the scenes in the Community Archives. Educational activities are covered on Poppy's Page and there is the usual round up of Friends news on page 20.

Philip Groves

Front Cover Story

The Annual Memorial Lecture was held on Saturday 13th November at 2.30pm at The Golf Hotel. The lecture, entitled "Lancasters, Lincolnshire and the International Bomber Command Centre" was given by Air Vice Marshal Paul Robinson OBE FRAeS and was very well received by the large audience who attended.

In this Issue

Page 3	Volunteering at the museum	Page 12	The Museum Community
Page 4	"Axle Cooling" Sketch Book		Archives
Page 5	Experiences of a Volunteer	Page 16	Bertha, March 1922
	175 Club Winners	Page 18	Poppy's Page
Page 8 & 9	From the Collection	Page 20	The Friends' Page
	Royal Celebrations		

The Newsletter Committee

Chairman - Paddy O'Neill Editor - Philip Groves Marjorie Sargeant

To contact the Newsletter Team please write to:-

The Cottage Museum, The Bungalow, Iddesleigh Road, Woodhall Spa, Lincs. LN10 6SH
or email philanddeliagroves@gmail.com
Reg. Charity: 1114268 Reg. Museum:1929



Volunteering at the Museum

Are you looking to occupy those spare hours by Volunteering? Look no further. The Cottage Museum in Woodhall Spa is looking for new Volunteers to help run the Museum.



The Woodhall Spa Cottage Museum

We are looking for new Volunteers to join our team to help with the running of the museum.

There are no set hours so you can be as flexible as you like. The museum is a very friendly environment and offers an enormous variety of opportunities for Volunteers to be involved, be it meeting people, using practical skills or office and computer knowledge.

Main Areas covered are:-

Marketing

Finance

Visitor Services (Meeting and Greeting)

Education

Ground Maintenance

Fundraising support (Special events e.g. 40s Weekend, Music in the Garden)

The Museum is housed in a 19th century pre-fabricated bungalow and the collection documents the development of Woodhall Spa using photographs and items that have been donated over the past 35 plus years. If you are interested in local history this is the place for you.



Museum Volunteers providing refreshments at a 1940s Weekend event

An expression of interest form and descriptions of the various volunteer roles are available from the museum website at www.cottagemuseum.co.uk.

Lynnette Needham

Volunteer Coffee Mornings

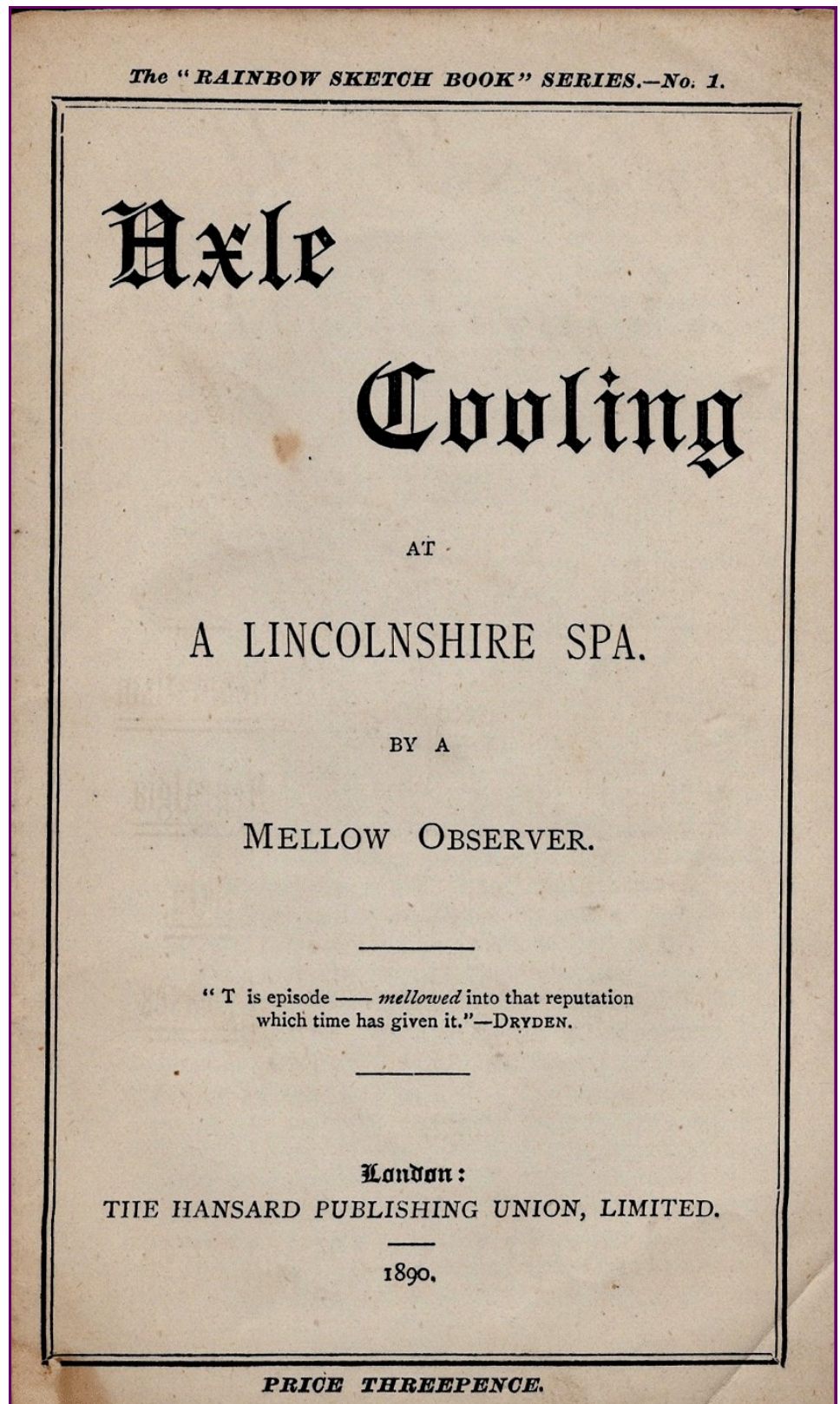
A coffee morning is normally held monthly to enable volunteers from the various teams to meet each other and to meet some of the Directors. It affords a great opportunity to exchange ideas and make suggestions, or just have a general chinwag! The next event is planned for Wednesday morning April 6th from 10.30am and on the first Wednesday of the month thereafter, dependant on public health considerations. but please check our website, or social media for the latest information.

“Axle Cooling”

Now here's a story.....in the 18th century Luke Hansard established a printing firm in London. This continued with his son Thomas and in 1889 Parliamentary debates were published by The Hansard Publishing Union Ltd. As we know the repository for such discussions is still called Hansard.

However, other publications were printed by the firm and one year later, in 1890, a series named, The “Rainbow Sketch Book” began...and what was the first place to be “sketched”? None other than Woodhall Spa! So, while I do not imagine there are records of Woodhall Spa in the Hansard of government at the time, it is fascinating that a small village in faraway Lincolnshire had information about it printed by the same illustrious firm.

The sketch was named “Axle Cooling.” The reporter having travelled to this quiet watering place from the metropolis, felt tensions relax like the stilled wheels of a carriage, as he explored this unique Spa village.



The front page from the “Rainbow Sketch Book “
This was the first sketch in the series which was called
“Axle Cooling” and featured Woodhall Spa.

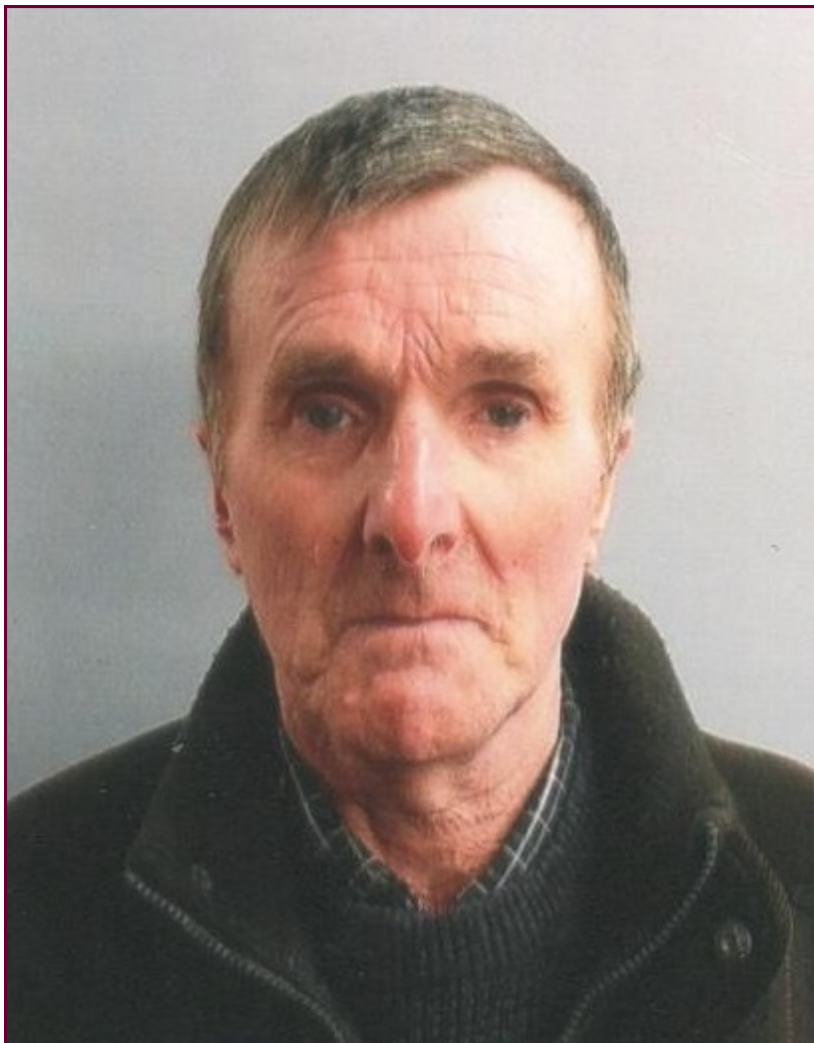
Marjorie Sargeant

Experiences of Museum Volunteer Ivan Lilley

When I retired from work, I knew I had to keep myself occupied. I called the Museum to ask if I could volunteer. Patricia Duke-Cox suggested the Visual Assets team and put me on to logging and numbering photographs with Keith Davis. The first day I was shown a photograph of a bus trip from The Mall and asked if I knew anybody featured on it. Some were neighbours and some of them were people I had worked with 50 years ago.

One day, she asked us if we could put the photographs in number order, instead of the classified sections used at that time. It was quite some task, but after a few weeks we had done it. I have carried out the same and just lately I have been looking through old guidebooks relating to Woodhall Spa to see if any of the photographs are on file.

Just before Christmas, I joined the Collections Care team. Their work is similar to the visual assets section and everything is photographed and logged before putting in its correct box where everything is numbered.



Museum Volunteer Ivan Lilley

Recently we have been cleaning out the Museum display areas and cabinets to get ready for the new season. At present we are looking for items and photographs to put in the exhibition to celebrate the Queen's 70th year and her accession to the throne.

175 Club Winners

November 2021

£25 [51] Barrie Horton
£20 [102] Nigel Webb
£10 [63] Sam Leggate
£10 [145] Stan Burton

ANNUAL DRAW 2021

£100 [96] John Wilkinson
£50 [130] Ian Parker
£30 [158] Eddie Hannah
£20 [10] L. Hibberd

I have also joined those who meet and greet the visitors, answering questions about the Museum and Spa when needed.

Some visitors who come in to the Museum used to live in Woodhall Spa and I would know them, some I have not seen for over 30 years.

Ivan Lilley

KINGFISHER EGRET COOT MOORHEN MALLARD
OSTERCATCHER HERON OSPREY

Answers to Puzzle on Page 18

Visit
OAKLANDS~GRANGE PARKS

Horncastle Road, Woodhall Spa



A private park home estate offering both security and peace of mind. Developed to the highest standards with homes at affordable prices. You can be assured of a warm welcome.

Visit our new website on
www.oaklandsgrangeparkhomes.com
or for further details ring Heather Shepherd on
01526 352312
or email: oaklandsgrange@live.co.uk

or just “drop in”



WATERMAN CARAVAN SERVICES
FULLY QUALIFIED CARAVAN & MOTORHOME
ENGINEER
BASED IN HORSINGTON

FULLY MOBILE

***FULL SERVICING**
***HABITATION SERVICING**
***UNDERGEAR SERVICING**
***GAS QUALIFIED AND CERTIFICATES PROVIDED**
***DAMP REPAIRS**
***ACCESSORY DEALER**

TEL: 01526388350

MOB: 07824778357

EMAIL: david.waterman6@btinternet.com

WWW.CARAVANSUPPLIESINTERNATIONALSHOP.COM

DECORATING
SERVICES

Professional Painting
and
Decorating Company

Operating for
over 20 years

Woodhall Spa Office 01526 568568

Horncastle Office 01507 834568

During 09:00am to 5:00pm

or email:
decoratingservices8000@gmail.com

TEA HOUSE IN THE WOODS TEA HOUSE & RESTAURANT

Woodhall Spa's Oldest Tea Rooms

Open Tuesday - Sunday from 10am

Offering homemade cakes, lunch & traditional afternoon teas

Food available all day

Evening restaurant menu from 5.30pm

Coronation Road, Woodhall Spa, Lincs. LN10 6QD 01526 354455

www.teahouseinthewoods.co.uk

GRAHAM FIDLING Traditional BUTCHERS

woodhallbutcher.co.uk • 

7 The Broadway, Woodhall Spa, LN10 6ST

 01526 352196 •  07866805594

Local traditional butcher selling a wide variety of meats, reared locally on the outskirts of Horncastle. Cooked meats, a selection of pies and condiments.

Also selling Lincolnshire specialities, including award-winning Lincolnshire sausage, stuffed chine and pork and apple burgers.

Orders taken for pubs, tea rooms, restaurants, schools, hotels and care homes. Orders can also be made by phone and delivered free of charge within 10 miles!



Toni O'Neill

Member of The Society
of Floral Painters



Commissions Undertaken for
Floral Paintings in Watercolour
in Memory of Your Special Occasion
or Flowers from your Garden

For more information call 01526 354982
or e-mail oneill_t3@sky.com

From the Collection - ROYAL CELEBRATIONS



As we enter another year under the yoke of another Covid variant, we have the Queen's Platinum Jubilee to look forward to. Though, by the time you read this, the official Jubilee in February will have passed - a magnificent milestone that no other English monarch has ever achieved.

For our own villages' celebration I have raided the Museum's archive to look for any images of past Jubilees to bring to you in this newsletter.

Illustrated left, the first image dates back to 1897, Queen Victoria's Diamond Jubilee. It was taken outside the shops of the Royal Hotel that were fronting onto Tattershall Road. Apart from bunting, there is a huge flag moving within a stiff breeze and below it a 'VR' icon. Sadly, this building was demolished after being bombed in 1943.

Community Room for Hire

At the Cottage Museum

Very reasonable rates:

Morning, afternoon, evening or all day rates.

Maximum number of people 16

(dependant on Covid Restrictions)

For further details and bookings please contact:

info@cottagemuseum.co.uk

Royal Celebrations continued...



However, prior to World War II, the country had the Silver Jubilee of King George V. It was celebrated in Woodhall Spa by the naming of the park on Stixwold Road as Royal Jubilee Park by Princess Marie-Louise, a granddaughter of Queen Victoria. She was in the village as a guest of Sir Archibald and Lady Grace Weigall. Our next image shows the house party staying at Petwood for the celebrations.

The Princess is seated in the centre with Lady Weigall to her left and Sir Archibald crouching between them.

As for Queen Elizabeth II, we have no images of her Silver, Golden or Diamond Jubilees but there is one of her Coronation in 1953. It shows the old primary school on Witham Road



decorated for the occasion. EII R is well catered for together with a crown and a Royal coat of arms. The majority of these items are in the Museum's Collection.

This building is no longer a school having been superseded by the current building in the 1960s. The old school still

stands, though altered. It became a garden centre outlet but is now a private house.

Nicholas Duke-Cox

Woodhall Spa Cottage Museum

India Village

15 The Broadway
Woodhall Spa
Lincolnshire LN10 6ST
Tel: 01526 352223/354657



Opening Times
Midday - 2.00pm
5.30pm - 11.30pm
7 Days a Week

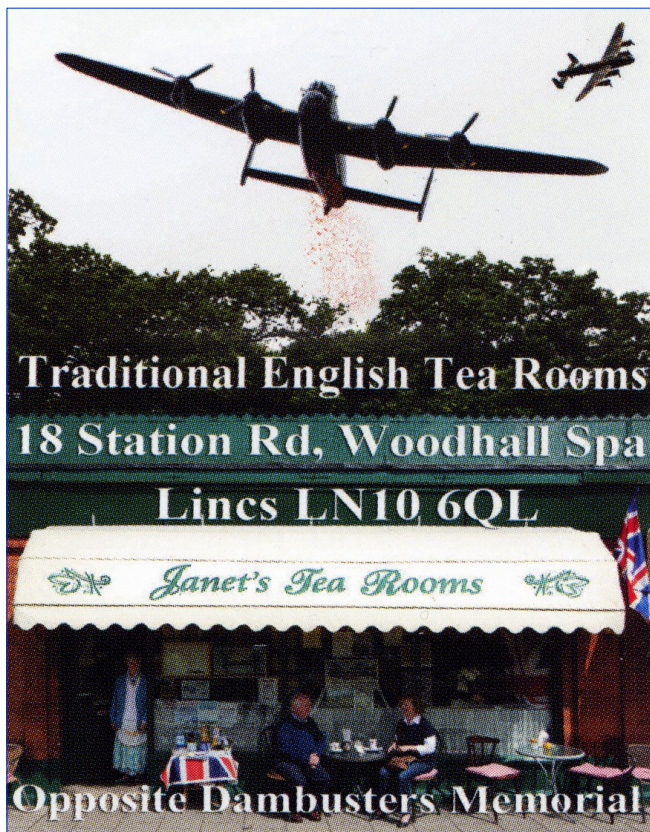
**10% Discount
on Take-Aways**

*For the Best Indian
and
Eastern Dishes*

fashion by
rieke
ANTISTRESS®



PETER SCOTT
1 The Broadway
01526 353935
Open 7 days



THE MELROSE

BROADWAY CENTRE WOODHALL SPA

A warm friendly family run
business hidden away at the
bottom of the Broadway Centre,
serving back to basics,
home-cooked foods using
local produce.

Open 9am Monday - Saturday

Breakfasts
Home cooked lunches
All day menu

TEL 07983638246
OR
07930878803



PREMIER PET CARE

QUALITY PET FOOD
AND ACCESSORIES

PROFESSIONAL FRIENDLY
SERVICE AND ADVICE

STOCKISTS OF ALL MAJOR
BRANDS PLUS EVERYTHING
AVAILABLE TO ORDER

FREE LOCAL DELIVERY

01526 352626

Unit 1, The Broadway Centre, The Broadway
WOODHALL SPA, Lincs. LN10 6ST
mail@premierpetswoodhallspa.co.uk
www.premierpetswoodhallspa.co.uk

Grimsby Town Fish Products

on The Mall car park

every Friday morning
9.00 - 10.00 am

for HOME DELIVERIES

ring STEVE on 07708 218821

Tim Fry

Traditional Signwriter

Signwriter with over 35 years experience

- Vintage Vehicles
- Commercial Vehicles
- Trailers & Curtain sides
- Narrow Boats
- Shop Signs, Sign boards
- House Signs
- Banners & Shop Canopys
- Exterior & Interior Walls

Please visit my website at....

www.timfrysignwriting.uk

Instagram... @timfrysignwriting.uk

01526
354492



07810
351511

Woodhall Media

Maps to magazines | locals to tourists
we have the media to promote all businesses



Woodhall Media Ltd
20 Abbey Dr, Woodhall Spa LN10 6QU
T: 01526 580383 | www.woodhallmedia.co.uk

Woodhall Spa Cottage Museum

The Museum Community Archives



Patricia Duke-Cox working in the Archive Storage area of the museum

The Museum continues to receive requests to answer queries from its community archive that has been built up over the years. They vary from simple requests to identify a specific item, place or name to more complex requests from organisations or individuals.

In September there was a request from the Joseph Banks Centre in Horncastle about preparing documentation for accreditation purposes, whilst a few days later a couple of photographs of the Witham Road in 1957 were donated which gives an interesting comparison with how it appears in 2021.

In early October a collection of about 50 postcards of Woodhall Spa were offered and accepted as many complemented the existing collection. Before the end of the month when the Museum closed, there was an enquiry relating to the Railway exhibition as the visitor had seen a photo of her Grand-father who had been Station Master at Woodhall Spa and hoped there might be more images of interest. This was referred to Alan Stennett who had contributed many of the exhibits and has a great fund of knowledge.

Another enquiry came from the new owner of a house in Woodhall Spa, to find out if the house was designed by the same architect as that of the Golf Hotel. This was followed by another request to determine whether a photograph of a small building might be from the Boulton and Paul catalogue, but this was inconclusive, even though the Museum does have a full catalogue.

For the month of November, a member of the local district Royal British Legion sought help in identifying the first names of those who had died in World War II. A mutual research project resulted in all names being identified, so both parties were happy with the result.



St. Andrew's C of E archived Admission Register

17	7	11	41	Infant	-	-	28	8	47	Left district	
18	2	1	42	Infant	-	-	31	7	53	Left to Grammar School	
19	2	12	39	School in Bland	-	-	30	6	47	Hemby (York)	
20	12	4	41	Rockton School, Wakefield	28	1	47	7	47	Returned home.	
21	11	3	42	Infant	-	-	9	4	54	St Basil's Sec. Wood St.	
22	19	4	42	Infant	-	-	9	4	54	"	
23	24	3	42	Infant	-	-	25	7	52	Left district	
24	2	12	36	} Horwington left.	28	8	47	23	7	48	Left to H.G. School.
25	7	11	41		28	8	47	9	4	52	Left to Convent School
26	1	1	35	Polish School, Germany.	-	-	24	7	47	Left the district	
27	17	5	42	Infant	-	-	1	4	53	Left the district Hemby.	
28	25	6	42	Infant	-	-	29	7	48	Left to Horncastle	
29	29	11	37	Bucknall.	28	8	47	-	-	Left.	
30	26	2	42	Infant	-	-	31	7	53	Left to Grammar School	
31	14	4	42	Infant	-	-	22	7	49	Left to Priory School	
32	23	10	36	Hilton by Boston.	27	3	47	19	3	48	Left the district
33	16	1	40	Polish School, Germany.	-	-	26	7	47	Left the district	
34	3	3	36	Stand St., Grimsby	27	3	47	30	5	47	Returned to Grimsby
35	27	3	39	Stand St., Grimsby.	-	-	30	5	47	"	
36	1	14	41	Rockton (Huddersfield) [Woodhall]	28	3	47	27	2	48	Left district

Detail of some of the information recorded in the School Admission Register

Family history is often sought. One offer came from a donor wishing to deposit letters that related to a family that lived in Woodhall Spa and recorded his time in World War II along with a family tree going back to the early 1900s. A more recent enquiry came from a family historian wanting to consult the admission registers for St. Andrew's School, which proved to be most rewarding for her, but also posing more questions!

Patricia Duke-Cox



Moorland Service Station

Fuel & Convenience Store
Horncastle Rd, Woodhall Spa LN10 6UX Tel: 01526 354333

- Groceries
- Hot & cold drinks
- Logs/kindling
- Jet Wash
- Charcoal
- Bottled Gas





- Disposable BBQs
- Motor Supplies
- House Coal
- Snacks
- Ice cream
- Sandwiches

INSURANCE THAT'S ON YOUR DOORSTEP

Having a local office means we're accessible, whether you need to make changes to your policy or make a claim.

We can help you insure your:

- Home & Car
- Horse & Horse box
- Business
- LGV & Commercial Vehicle

For a real conversation about your insurance call or pop in

The Old Mill, Roughton Moor, Woodhall Spa,
Lincolnshire, LN10 6YQ | 01507 522345



Our Agents are appointed representatives of The National Farmers Union Mutual Insurance Society Limited (No. 119972). Registered in England. Registered Office: Tiddington Road, Stratford upon Avon, Warwickshire, CV37 9BL. Authorised by the Prudential Regulation Authority and regulated by the Financial Conduct Authority and the Prudential Regulation Authority. A member of the Association of British Insurers.

Underwoodhall

Jewellery and Antiques



The Broadway, Woodhall Spa.
01526 353815

**7 TOOLS,
1 BATTERY**

STIHL's new range of cordless garden power tools offers unparalleled performance and convenience.

At the cutting edge of battery-power technology.

STIHL **VIKING**

For full sales and service of STIHL & VIKING products:

CHARLES H. HILL LTD
Moor Lane, Horsington,
Woodhall Spa, Lincolnshire
www.charleshill.co.uk
Tel: 01526 388281

Withamview
VETERINARY SURGERY

We are an independent small animal practice owned and run by two vets with over 20 years of combined experience. We provide our own out-of-hours service to ensure that there is a familiar face when you need it most.

- * 10% discount on consults for service families.
- * Pet Health Plans available.

please contact us, or visit our website for further information.
www.withamviewvets.co.uk

OPEN NOW

MON - FRI 8:30am - 6pm
SAT 8:30am - 12pm

01526 268060
enquiries@withamviewvets.co.uk

29 Alexandra Road
Woodhall Spa
Lincolnshire
LN10 6RE

01526 352538

**LUNCH & DINNER
WED - SAT
12 - 2 pm & 6 - 8.30 pm
CLOSED ALL DAY
MON & TUE**



**SUNDAY
LUNCH
12 - 3 pm**

**ABBEY LODGE INN - KIRKSTEAD
WOODHALL SPA**

DON'T BE DISAPPOINTED!!

REMEMBER TO BOOK YOUR TABLE FOR YOUR NEXT VISIT

**WEDDINGS ANNIVERSARIES BIRTHDAYS
MEETINGS DINNER DANCES BUFFETS
OR OTHER SOCIAL FUNCTIONS**

OUR MONK'S ROOM HOLDS 100 - 150 PERSONS

**R. ARNOLD
Funeral Directors**

Independent Family Funeral
Directors Est 25 years.

**Newly opened in Louth
161 Newmarket, Louth LN11 9EJ
01507 608200**

Lincoln - 01522 542701

Mablethorpe - 01507 473100

Sutton-on-Sea - 01507 442300

Alford - 01507 463200

Woodhall Spa - 01526 341707

We take care of the smallest of details with
compassion and dignity, we personalise
every service for each family.



NHP

WHOLESALE, RETAIL & FREE HOME DELIVERY SERVICES

FIND US AT OUR SHOP IN WOODHALL (5 WITHAM ROAD),
AND AT OUR SHOP IN CONINGSBY (54 HIGH STREET).

LIKE US ON FACEBOOK- NHP of Sibsey.

YOU CAN CALL US ON **01526 344226**, TO PRE ORDER YOUR
FRUIT BASKETS, FLOWERS, 25KG POTATOES AND VEG ORDERS
OR CONTACT US ON FACEBOOK.

WE OFFER A HUGE VARIETY OF FRESH LOCALLY GROWN
PRODUCE AS WELL AS OTHER FIRST-CLASS PRODUCE. THERE
WILL ALSO BE PUMPKINS, CHRISTMAS TREES AND HOLLY
WREATHS AVAILABLE.

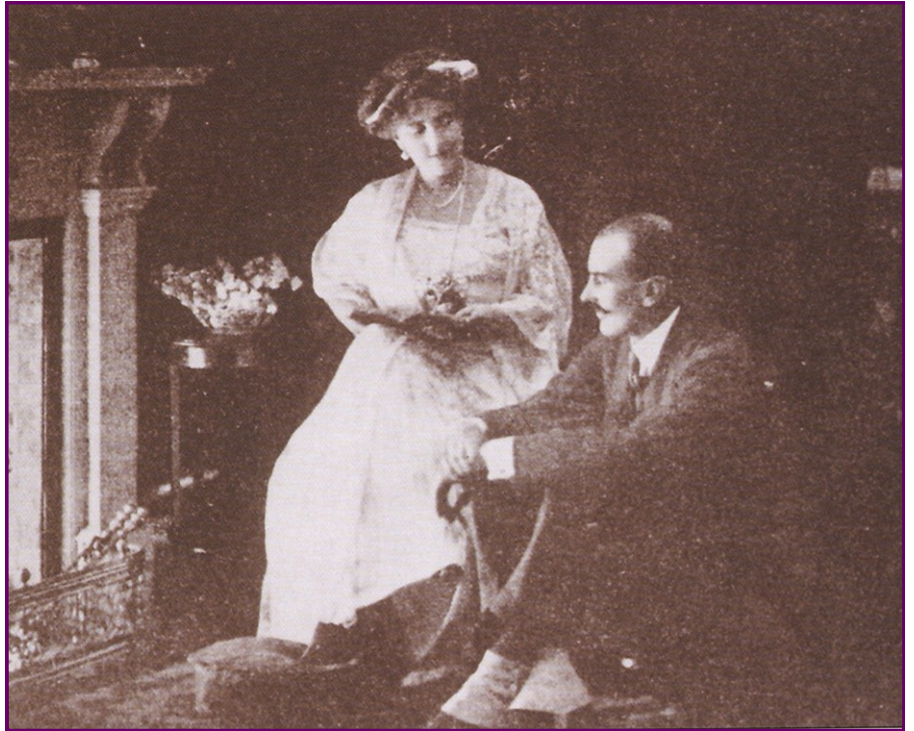


Woodhall Spa - March 1922

Dear Readers,

News has arrived that Sir Archibald and Lady Weigall are returning to Woodhall Spa! It is two years since they journeyed to South Australia when he was appointed Governor of that state. It was expected that he would stay much longer but he has said that his expenses amounted to more than his salary. Perce says that Lady Weigall is the one with the money but ordinary folk (like himself, he means) would have worked out the financial side of things before they went.

Apparently, Sir Archibald was popular with the people there and at a public meeting there was an appeal for him to stay, given by a ventriloquist's doll! Well, that seems scarcely dignified but I expect they think differently from us down there. The speech was described as "a spontaneous and moving oration." Perce says how could it be spontaneous when the ventriloquist would have had to practise it?



Sir Archibald and Lady Weigall



The Station at Kirkstead by the side of the Witham

Gardens of the hotel are to remain as a centre for balls and soirées. I cannot wait to see Lady Weigall in one of her glamorous and expensive gowns, at a function there again.

When the Weigalls arrive they will see changes in the Spa. Last month our Urban District Council resolved to ask the Great Northern Railway Company to change the name of Kirkstead station to Woodhall West (favoured by Captain Hotchkin) or Woodhall Junction. This is to let visitors know they have almost arrived at the Spa. Perce says the community at Kirkstead will be annoyed as it is their station... and anyway there are timetables and surely posh visitors can read?

Another difference is that because the Royal Hotel has received far fewer visitors since the Great Hostilities, it is being turned into flats. Happily, the beautiful Winter

Bertha
March 1922

Marjorie Sargeant

EBRINGTON ARMS

MAIN STREET KIRKBY ON BAIN LN10 6YT



Food is served Tuesday to Sunday
between noon and 2pm and 6pm - 9pm
Sunday Lunch available noon - 2pm



A family run traditional pub restaurant
serving good home cooked food
with a selection of cask and keg
ales.(CAMRA Good Beer Guide)
3.5 miles from Coningsby
and 2 miles from Woodhall Spa.

Families, children and dogs welcome.
The bar has a warm coal fire in winter.
Outside the patio area is covered
ensuring a dry seat whatever the
weather and the pleasant beer garden
has a gazebo and children's play area.

All Year Round -
A great place to eat and
drink!
Always advisable to book
Telephone 01526 354560

Petwood

Wine, dine and relax

Set in the heart of Lincolnshire, The Petwood Hotel is a perfect base for exploring the county's coast, the Wolds, aviation heritage sites and the historic city of Lincoln



For best available rates please call us on 01526 352411 or email reception@petwood.co.uk

Petwood Hotel, Stixwold Road, Woodhall Spa, Lincolnshire, LN10 6QG

www.petwood.co.uk





POPPY'S PAGE

Hi Everyone - Hope you all had a lovely Christmas. It was much better than last year and we had lots of visitors in the house, which I always enjoy. Jane Hodgson has put together a list of activities for the Summer months and a Spring Trail to look for nesting birds in and around the museum. Enjoy yourselves. Bye for now, Poppy



Educational Activities Planned for 2022 and a Spring Trail

6th April until 28th May

Spring Bird Trail

Look for the nesting birds in and around the museum

-0-

6th July until 10th September

The Time Travel Trail

Find the time machine and time travel your way through the museum

-0-

Wednesday 3rd August 10.00 am - 12.00 noon

Rag Rugging

£5 per person. Children must be accompanied by an adult.

Booking essential, please contact the museum.

-0-

Wednesday 17th August 10.00 am - 12 noon

Jubilee Clay

Fun with clay to celebrate the Queen's Jubilee.

£5 per person. Children must be accompanied by an adult.

Booking essential, please contact the museum.

Jane Hodgson

Puzzle

Birds that live near water

Can you rearrange the letter in these words to find the names of the birds?

GNISHREIKF

GREET

TOCO

NOMEROH

LALADRM

STORYTHRACCEE

RHONE

PREYOS

ANSWERS ON PAGE 5



WILLOW HOLT

Caravan & Camping Park

- **TENTS & CARAVANS**
- **STATIC HIRE & SALES**
- **ACCESSORY SHOP**

LODGE ROAD, TATTERSHALL. LN4 4JS

TEL: 01526 343111

The Friends of the Woodhall Spa Cottage Museum

Committee: John Wilkinson
Annette Southcott

Membership Secretary: Judy Everitt

Dear Friends

It's hard to believe that it's February already and that Spring is just around the corner.

We sincerely hope that we will be able to return to normal meetings and activities this year and look forward to welcoming you to our regular Coffee Mornings on the first Wednesday of the month.

Many thanks to those of you who have renewed your Friends membership or sent a donation, we really appreciate your invaluable support which is essential to the running of the Museum. Remember that this year we will be open from 6th April, Wednesday to Saturday. Bring your membership card for free entry.

We are currently organising the annual talks and will let you know the date and topic for the Spring event as soon as it is confirmed. Tentative planning has begun for the Queen's Jubilee celebrations in June, and the 1940s weekend in July. We are awaiting confirmation of details for both from the organisers.

One date for your diary, the annual memorial lecture 12th November 2022 will take place at the Golf Hotel. This year, we are fortunate to have booked a talk by James Bulgin of the Imperial War Museum. James is the curator of the recently opened and highly acclaimed Holocaust Galleries at the IWM. You may have seen him recently on the Channel 5 series 'Secrets of the Imperial War Museum', a fascinating look at the work that goes on behind the scenes. We will let you know the booking details for this event nearer the time.

The Friends group needs more members to help with the planning of events and at the functions themselves, particularly with refreshments at Music in the Garden (Sundays in August) and the 1940s weekend. If you feel able to offer your services baking cakes, serving teas and/or washing up, we would love to hear from you. Finally, if there is sufficient interest, we are happy to arrange some external visits. This is something we would like to discuss at the next Coffee Morning on 2nd March and look forward to seeing you then.

Come and Join Us

The backbone of the Cottage Museum is our volunteers and some of them are putting a lot of hours in and could really do with a hand. Can you help? Do you have a few hours to spare in the month? It does not have to be a massive commitment. There are numerous opportunities to suit most interests. If you would like to find out more without committing yourself then please call us on

01526 352456



What's On Guide

Events planned for this year
but subject to change
dependant on Covid
restrictions

-0-

Spring Talk
"Sir Joseph Banks Hero or Villain of Fen Drainage"
Talk by Dr. R. Wheeler
Golf Hotel
23rd April 2.30pm
Tickets at £6 from
Museum Office
Tuesday-Thursday
9.30am to 3.30pm

-0-

Spring Bird Trail
Look for the nesting birds in
and around the museum
6th April until 28th May

-0-

Woodhall Spa Country Show
22nd May 2022
Museum stand in
The Heritage Tent

-0-

40s Weekend
9-10th July
Stands in the museum
gardens and refreshments
from the Patio Café.

For the latest information visit
www.cottagemuseum.co.uk
& www.woodhallspa.org

Annette Southcott

