

Woodhall Spa Cottage Museum



Gill Noble and Patricia Duke-Cox proudly display
the Certificate of Accreditation

Newsletter No. 24
November 2016

Woodhall Spa Cottage Museum

A Note from the Editor

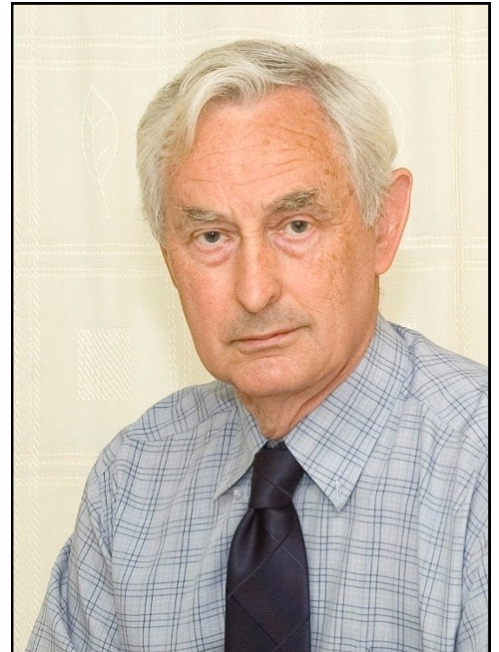
Another season is over and by all accounts it has been the most successful yet, with visitor numbers up on last year.

There is however a bit of a cloud descending with the knowledge that this was our last season with the East Lindsey funded a Tourist Information Centre at the museum. The TIC has been a victim of all the dreaded spending cuts and we now have to decide how we move forward. Hopefully by the time the next Newsletter comes out we will have found a satisfactory answer. Of one thing you can be certain - the museum will open as usual at Easter 2017 and there will be tourist information service available. There is an interim statement from chairman Gill Noble on page 8 of this issue bringing us up to date with the current situation.

Once again the 40's Weekend was an outstanding success for the museum. The Music in the Garden events held on every Sunday afternoon throughout August were popular too. These events were free as we are not able to charge for musical performances and the various musicians all donated their services. The refreshments, however, did make money towards the museum funds. There is a short write up with photos on page 13 of these events.

We pay tribute in this issue to Rodger Pickavance who has recently moved to Anglesey in North Wales. Rodger's contribution to the museum has been tremendous. Initially he got the digitising of the extensive collection of photos and glass plates underway and then headed up the capital works and chaired the Development Committee, which steered through the redevelopment of the museum, made possible by the Heritage Lottery Fund Grant. His legacy to the museum will truly be a lasting one. We wish Rodger and his wife every happiness in their new home.

I hope you enjoy this issue and wish you all a very Merry Christmas and a Prosperous and Happy New Year.



Philip Groves

In this Issue

Page 3	Museum Accreditation	Page 12	From the Collection
	Rodger Pickavance Appreciation	Page 13	News in Brief
Page 4	Rodger Pickavance continued	Page 16	What Our Visitors are Saying
Page 8	Woodhall Spa - Nov. 1916		"150 Club" Winners
Page 11	Thoughts on Progress	Page 18	Poppy's Page
		Page 20	The Friends' Page

The Newsletter Committee

Chairman - Paddy O'Neill Editor- Philip Groves Roger Webb Marjorie Sargeant

To contact the Newsletter Team please write to:-

The Cottage Museum, The Bungalow, Iddesleigh Road, Woodhall Spa, Lincs. LN10 6SH

or email phil.delia.groves@btinternet.com

Reg. Charity: 1114268 Reg. Museum:1929

Museum Gains Accreditation Award

Woodhall Spa Cottage Museum has recently been awarded full Accreditation for the third time since 2002. To qualify for this accolade the museum has had to meet the nationally agreed standards for UK museums on how it is managed, the services it offers and how the collection is cared for.

The feedback from the Accreditation Panel appointed by Arts Council England states: "The panel was pleased to note the museum had gained a range of awards and complimented the museum on an excellent Accreditation return."

Gill Noble, Museum Chairman, expressed her delight at the news and said that this achievement reflects the loyalty and support that continues to be given by the museum's dedicated volunteer workforce.



Rodger Pickavance - An Appreciation of his Work for the Museum

After a long and frustrating struggle to sell his house in Woodhall Spa, Rodger has finally moved with his wife Eileen to Anglesey in North Wales, to be nearer to his family.

Writing for the Newsletter back in October 2011 he said "When I retired, I wondered whether the museum had a photograph of our present house and got sort of sucked in from there. To make matters worse, the museum didn't have an early picture that showed our house! I took over looking after the museum's visual assets and, somehow, ended up as the Vice Chair of the Directors and Chair of the museum's Development Committee", a typically understated comment from Rodger. He has always quietly got on with the job, with tremendous attention to detail and with great dedication.



Rodger Pickavance

Rodger was brought on board by Ron Lovatt around 2003, to catalogue the many photos and glass plates that formed the museum's archive. He soon became an expert in the archive and brought many different views of the village to the Woodhall Spa Show and the Christmas Market. Pam Cowlshaw particularly remembers standing with him on cold December evenings explaining to Christmas Market visitors where individual buildings were.

Jackie Goodall remembers "we were all commandeered, (or was it commanded, we remember not) to explore the development potentials of the sheds. Look where that journey led us all!" She continued, "There are of course many instances where Rodger and I worked together. My

Woodhall Spa Cottage Museum

Rodger Pickavance - continued.

overwhelming memory is of Rodg's quiet fortitude. It didn't matter what came up, Rodg stuck to his game plan and carried on; spirit of the blitz and dogged persistence and all that. He was a stalwart regarding the photographic archive and made the village Christmas Market and the Woodhall Show his 'trademark.' He and I were like chalk and cheese, so in terms of developing the museum and its volunteers we made a good team, with controls and balances in place. He is a stalwart and has dedicated a considerable part of his retirement to the museum. I'm sure he'll be missed."

Rodger's greatest contribution to the museum has been his work in overseeing the capital works for the Heritage Lottery-Funded re-development of the museum and its outbuildings and chairing the Development Committee. The Development Committee meetings were always held at Rodger's house and fellow Director Tom Johnson remembers them vividly - "All committee meetings took place in his house and moving through to the conservatory meant you had to duck your head. On more than one occasion the reminder from Rodger never reached me on time. So I started with a thick head and finished with one. There was always a plate of chocolate biscuits on the table and a welcome cup of coffee. If you ever got to see his railway layout then the young boy in us all made us determined to get that old train set down from the loft, which of course none of us have got round to. Rodger not only chaired the meeting, supplied the refreshments, did by far the majority of the works but also took the minutes which were always produced in a very short space of time."

As you can see from the comments from his friends and colleagues, Rodger is a very gifted and respected man, who gets on with the job with no fuss. The problems he had to overcome and the hours and hours of work he devoted to the museum during the course of the HLF Development programme can never be adequately repaid by the museum and indeed the community of Woodhall Spa at large. All we can say is how lucky we all were to have a man such as Rodger on hand at the

right time, who had the talent, perseverance, patience and courage to take on such a mammoth task. It was so fitting that Rodger won the John Barker Trophy in 2015. The award, presented annually by Community Lincs, recognizes the work of those volunteers who, willingly and freely, give their time and effort to manage and maintain Lincolnshire community buildings.

We all send our thanks and best wishes to you Rodger and wish you and your wife all the very best in your new venture.



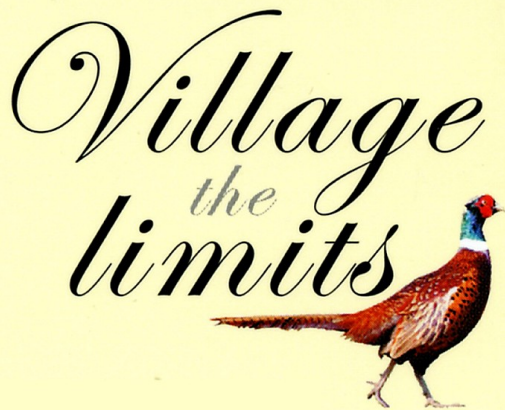
Rodger takes the call from HLF to say we have been awarded the grant



Rodger with David Hill on site as work on the development gets under way



Rodger Pickavance receives the John Barker Award from John Barker in September 2015



The Village Limits
Stixwould Road
Woodhall Spa
Lincolnshire
LN10 6UJ

t: 01526 353312
e: info@villagelimits.co.uk
w: www.villagelimits.co.uk

Avoid disappointment call ahead

Country Pub
Motel
and
Restaurant



Billy & Sonia Gemmell
Hosts

Richard Sivill

GALLERY

**OLD PHOTOGRAPHS COPIED
INSTANT PASSPORT PICTURES
FULL FRAMING SERVICE
PICTURE GALLERY
ARTISTS MATERIALS
ENGRAVING SERVICE / TROPHIES**

4-6 High Street, Tattershall, Lincs.
Tel.: (01526) 345388

Woodhall Spa Cottage Museum

Visit

OAKLANDS~GRANGE PARKS

Horncastle Road, Woodhall Spa



A private park home estate offering both security and peace of mind. Developed to the highest standards with homes at affordable prices. You can be assured of a warm welcome.

Visit our new website on

www.oaklandsgrangeparkhomes.com

or for further details ring Heather Shepherd on

01526 352312

or email: oaklandsgrange@live.co.uk

or just “drop in”



MEDITERRANEAN BISTRO

the taste. the smell.
the passion.
the pleasure.

Open 7 days a week
12pm - 11:30pm

1 Station Road
Woodhall Spa
Lincolnshire
LN10 6QL

Tel: 01526 354466
Email: info@zucci.org
Website: www.zucci.org



ADAM CARTER
DECORATING SERVICES

All domestic interior & exterior
decorating projects welcome

Visit my site and see the
standard

www.adamcartersolutions.com

Tel: **01526 352056**

Mob: **07795 692 179**

TEA HOUSE IN THE WOODS TEA HOUSE & RESTAURANT

Woodhall Spa's Oldest Tea Rooms

Open Tuesday - Sunday from 10am

Offering homemade cakes, lunch & traditional afternoon teas

Food available all day

Evening restaurant menu from 5.30pm

Coronation Road, Woodhall Spa, Lincs. LN10 6QD 01526 354455

www.teahouseinthewoods.co.uk



R. J Hirst

High Class Family Butchers of Woodhall Spa
Multi Award Winning Artisan producers - reviving and preserving historic Lincolnshire recipes



2015-2016 Winners of Select Lincolnshire Business of the Year Award
2015 -2016 Finalists Select Lincolnshire Best Producer Award (third year)
2015-2016 Finalists Select Lincolnshire Best Retailer Award (second year)

Telephone 01526 352321 or visit our website
www.rjhirstfamilybutchers.co.uk
Station Rd, Woodhall Spa (under the clocktower)
Follow Sadie Hirst  @RJHirstbutchers

Toni O'Neill

Member of The Society
of Floral Painters



Commissions Undertaken for
Floral Paintings in Watercolour
in Memory of Your Special Occasion
or Flowers from your Garden

For more information call 01526 354982
or e-mail oneill_t3@sky.com

Woodhall Spa Cottage Museum

Woodhall Spa - November 1916

Dear Readers,

The village has been quiet since the Season ended last month. We had several boarders but everyone says numbers are nothing like as good as before the war.

There were many entertainments with famous artistes, during the summer; some even came here from theatres in the metropolis. There were also local entertainments such as one of music and dance by Miss. Lunn's High School for Girls in Hartington House on the Broadway. After this there was a Sale of Work and amusing competitions.

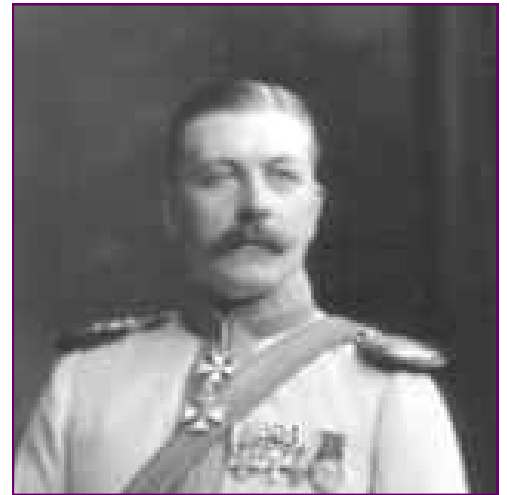
The village is also quiet because many of our young men have enlisted. There are still claims for exemption but they are rarely granted. The appeal of a carting contractor who claimed to have the entire contract for collection and delivery of goods at the station was summarily dismissed.

In September we heard that Pte. Sydney Street of Witham Road, serving with the Lincolnshire Yeomanry, had been injured by a severe kick from an army horse. He was following his family's trade, fixing the horse's shoe; perhaps our farm horses round here are more docile. His elder brother, Hewson, who is serving in France, was in hospital there suffering from enteric fever but mercifully he has since been discharged.

The village also has lighter concerns. Several letters were received by the U.D.C. about a cockerel crowing excessively loudly long before dawn on Kirkstead Road. After examining legal obligations the Council decided to write to the owner asking that the noise should be stopped!

Last week Mr. Walter Poucher of the Bakery on the Broadway married Miss Edith Stapleton in the Wesleyan church. The bride wore a navy costume with matching hat. Her brother arrived from France just in time for the ceremony.

We have been shocked by a report in "Weekly Dispatches" in which the Baron von Eckhardstein is described as, "one of the most noxious German spies in London in the last 20 years." The Baron was the first husband of Mrs. Weigall of Petwood who is so charming and does so much for this village. He came here quite often in the past. The article says the Baron gleaned information for the Kaiser from important London Clubs of which he was a member. He and his friend, Prince Henry of Prussia, enjoy taunting imprisoned officers and old London friends. Persons of this type are not expected in Woodhall Spa.



Baron von Eckhardstein

Bertha

Marjorie Sargeant

TIC UPDATE

The partnership that the Museum has had with East Lindsey District Council for the past twenty five years will finally end on 28th. November 2016. The need to make savings to the ELDC budget has led to the withdrawal of funding for two members of staff who have not only manned the Tourist Information Office, but also administered tickets and looked after the merchandise for people visiting the Museum. The Directors are fully committed to retaining a TIC facility within the Museum. They are actively pursuing funding to equip the Reception area with both the hardware and software that will be needed next April, when the Museum opens for the 2017 season.

Advice is being sought from various professional agencies from both within and outside the heritage sector. Regular meetings are being held to monitor the developing plans which are being drawn up to make sure that the Museum continues to thrive.

There will be another update in the next Newsletter.

Gill Noble October 2016



PREMIER PET CARE

QUALITY PET FOOD
AND ACCESSORIES

PROFESSIONAL FRIENDLY
SERVICE AND ADVICE

STOCKISTS OF ALL MAJOR
BRANDS PLUS EVERYTHING
AVAILABLE TO ORDER

FREE LOCAL DELIVERY

01526 352626

Unit 1, The Broadway Centre, The Broadway
WOODHALL SPA, Lincs. LN10 6ST
mail@premierpetswoodhallspa.co.uk
www.premierpetswoodhallspa.co.uk

Grimsby Town Fish Products

on The Mall car park

**every Friday morning
10.00 - 12.00 noon**

for HOME DELIVERIES

ring JOHN on 07708 596982



Signwriter with over 30 years experience

- Vintage Vehicles
- House Signs
- Narrow Boats
- Shop Signs, Sign boards
- Exterior & Interior Walls
- Banners & Canopys
- Commercial Vehicles
- Trailers & Curtain sidars

Please visit my website at....
www.timfrysignwriting.uk

**01526
354492**



**07810
351511**



14 The Broadway, Woodhall Spa
Lincolnshire LN10 6JT
Tel: 01526 352 183

**The Bakery and Delicatessen
of Woodhall Spa**
are proud to offer

Fresh Bread and Rolls Baked Daily
Pastries and Fancy Small Cakes
and
Celebration Wedding & Birthday Cakes
All baked daily on our premises

Woodhall Spa Cottage Museum

India Village

6 The Broadway
Woodhall Spa
Lincolnshire LN10 6ST
Tel: 01526 352223/354657



Opening Times
Midday - 2.00pm
5.30pm - 11.30pm
7 Days a Week

**10% Discount
on Take-Aways**

*For the Best Indian
and
Eastern Dishes*

The Mall Woodhall Spa

Come and visit us for a warm welcome.
Good Food, Good Beer, Good Company!

Open Monday, Wednesday,
Thursday and Friday
with food served
Lunchtimes 12-2 and evenings 5-9
Saturday with food served 12-9

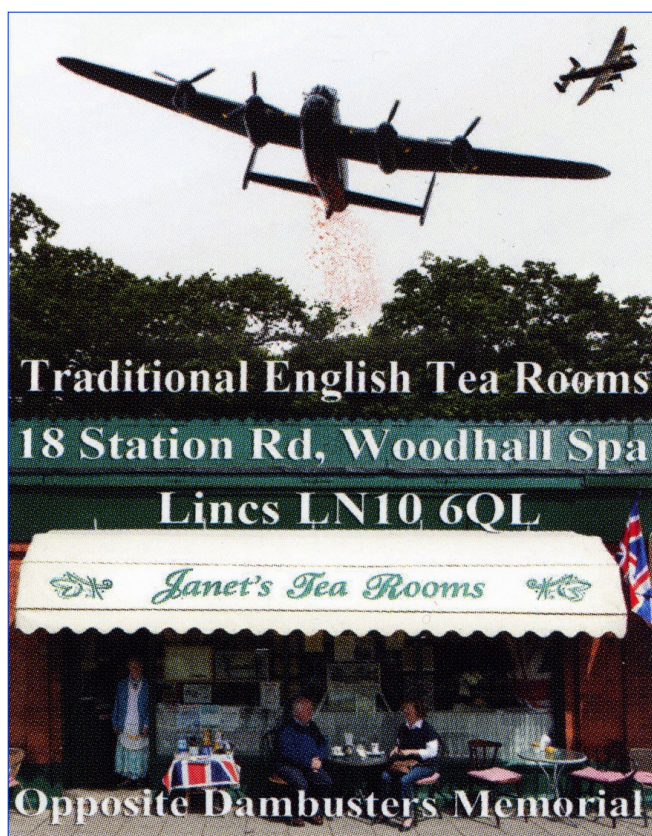
Sunday carvery
served 12-3 (booking advisable)

Children's menu available

Dogs are most welcome in the bar area
We look forward to seeing you soon!

01526 352342

or email themalltavern@btinternet.com



THE MELROSE BROADWAY CENTRE WOODHALL SPA

A warm friendly family run
business hidden away at the
bottom of the Broadway Centre,
serving back to basics,
home-cooked foods using
local produce.

Open 9am Monday - Saturday

**Breakfasts
Home cooked lunches
All day menu**

**TEL 07983638246
OR
07930878803**

Thoughts on Progress

Hello there, supporters of the Woodhall Spa Cottage Museum....!

I am still in the state of virtual shock on the realisation that Christmas is so near, just 65 days to go by my reckoning! So start on those cards!!

This year has been a busy one locally. Some very important developments have taken place which affect both the Community and the Cottage Museum. I draw your attention to the Defend Woodhall Spa site on Facebook which will inform you, if you are unaware of the proposed plans. I quote," Whilst it is clear the village has to play its part in the needs of today as well as yesterday, I am concerned with the loss of its essential character and the uncertain provision of more services. Already services are under threat. I need only mention the sewage and drainage problems of past years, the impending lack of school places and the likely problems of accessing doctor and dental services. My concerns should not be seen as a wide-ranging criticism of any development. However this proposed addition of over 300 houses over 15 years should not be at the expense of the tranquility, heritage and unique otherworldliness of our lovely village. It is still possible to appreciate the fascination that brings visitors to this important inland resort and main village. Its character is unique in Lincolnshire. How safeguarded will this be?

I wish the Parish Council and its doughty members success in meeting the challenges this introduces to an already heavy workload."

So go ahead, read and respond hopefully within planning rules: persuade those, whose decision it is, to safeguard as much as possible and develop tastefully for future generations and visitors..

At this juncture I must applaud the Directors of our favourite Cottage Museum! You will have read about the sad decision of East Lindsey District Council to discontinue the Tourist Information Point at the museum. We all know the reasons Government has imposed cuts on council spending. It seemed that this facility and twenty five years of Council and Cottage Museum co-operation were at an end. The loss of inspirational local government and voluntary sectors working together for mutual and local benefit, struck me as a very sad situation. However the directors and supporters, all volunteers, of the Cottage Museum intend to keep the facility open themselves.

That's what I call public service. Well done you!

Not much history in the contribution from my archive this time, I'm afraid. However, as Armistice Day is fast approaching, I should like to remind readers that in addition to the several memorials in or around the crossroads and Royal Square, there is another in the grounds of the Cottage Museum, in remembrance of those who fell at Arnhem in the second world war. There is an annual service to remember them each September which you will be very welcome to attend. Just contact the Cottage Museum later next year to check on the arrangements and timing.

A Happy Christmas one and all!

David Radford
Founding Chairman

COMMUNITY ROOM BOOKINGS

We are looking for a volunteer to manage bookings for The Community Room.
If you think you might be interested, please contact Gill Noble for more details.

01526 353455

Woodhall Spa Cottage Museum

From the Collection

After the publication of the last Newsletter we received the following email from Dr Nicholas Duke -Cox correcting the information on the photo of the Victoria Hotel, for which we are grateful.

He writes:-

I do enjoy reading the newsletter and catching up with the Museum. You are doing a splendid job.

I did, however, spot an error on page 16 re the photograph of the Victoria Hotel.

I am afraid this is not a view from the Baths i.e. to the north front of the Hotel. It is a frequently photographed view from the south-west. I agree with Mr Webb that it is an early view as the north extension is not present on the extreme left of the image. This view (1) PH00248 from nearly the same viewpoint shows the extension. The giveaway is the 'arbour' around the west door - the only door to have one.

Views of the north front are very rare, the only one I have seen to give a reasonable view and that was after the north extension was constructed is in the background of (2) PH00658 as the area was for services and a bar for non-residents, see (3) GN04620. There is also a postcard view taken from the north garden across to the tea house (4).

There was a later further extension to the north (5) GN03711 and of course the south extension also came later abutting to the south front on the image in the newsletter. (6) PH00253.

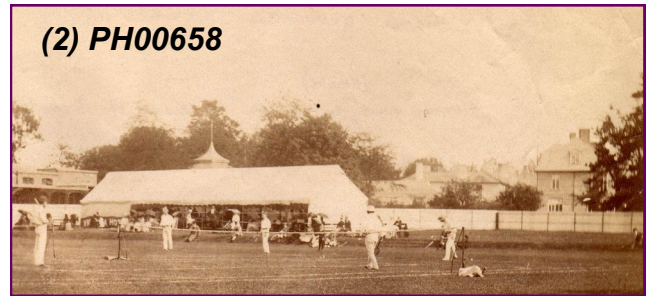
Forgive the long e-mail but it is important to get things right as the newsletter is read by many I am sure.

With regards to the other photograph it is indeed gardeners attached to the Victoria - some thought they were at the Petwood. I have no current idea who they are but have found the following about the lawnmower (7). This model is 'The Automaton' and was first produced in 1867. More info at https://en.wikipedia.org/wiki/Ransomes,_Sims_%26_Jefferies.

(1) PH00248



(2) PH00658



(3) GN04620



(4) Tea House from Victoria Hotel



(6) PH00253



(5) GN03711



(7) Lawnmower

Forties Weekend

Once again the 40's weekend was a great success for the museum.

Literally hundreds of visitors came into the museum gardens and over the course of the weekend over £2000 was taken in refreshments and sales of merchandise.

A big thank you to all those volunteers who helped make it such a success.



The gardens were alive with visitors all weekend

Music in the Garden

Every Sunday afternoon through August the museum ran a series of concerts in the garden. Admission was free and the museum cafe staff were on hand to keep the audience topped up with drinks and cakes.

The first event was held on Sunday 31st July and featured Mike Warwick, who sang Rock and Roll Music to an enthusiastic audience. This was followed on August 8th with Colin and Gerry who played "Jazz in the Garden".

The following weeks featured live acoustic music with Alan Bolt, including folk, country, 1950's and 60's, a Ukulele Band, and finally Michelle and Ian Wright, winners of the Lincolnshire Folk Song Competition 2015.

We were blessed with good weather for all the events and attendances were good, with all those who came having an enjoyable afternoon.



Rock and Roll event with Mike Warwick



Jazz in the Garden event with Colin & Gerry

Volunteer Coffee Mornings

A coffee morning is held once a month to enable volunteers from the various teams to meet each other and to meet some of the Directors. It is a great opportunity to exchange ideas and make suggestions, or just have a general chinwag!

The Coffee Morning is held on the first Wednesday of each month, in the Community Room and starts at 10.00 am. Why not give it a try?

Woodhall Spa Cottage Museum



WOODHALL SPA COTTAGE MUSEUM COUNTDOWN EVENING

At the Abbey Lodge Inn

Saturday 26 November 2016 starting at 7.00 p.m.
[doors open at 6.30 p.m.]

Teams of 4 to 6 to compete in an evening
of letters, numbers, raffle and fun.

Tickets £12 per head which includes a bar meal
(choice confirmed with ticket)

If you can form a team contact

Patricia Duke-Cox at the Cottage Museum to register
or email/phone either of the following addresses

info@cottagemuseum.co.uk

duke-cox@hotmail.co.uk

or phone 01526 352456 (office) or 07944 487 880

All proceeds to Woodhall Spa Cottage Museum funds

Accredited Museum: 1929

Reg. Charity: 1114268

www.cottagemuseum.co.uk

**THIS PAGE , OR PART OF IT, COULD BE
PROMOTING YOUR BUSINESS**

To advertise in the Newsletter please contact Roger Webb
Phone: 01526 353029

01526 352538

**LUNCH & DINNER
MON -SAT**



**SUNDAY
LUNCH
12 - 2 pm**

**ABBEY LODGE INN - KIRKSTEAD
WOODHALL SPA**

DON'T BE DISAPPOINTED!!

REMEMBER TO BOOK YOUR TABLE FOR YOUR NEXT VISIT

WEDDINGS ANNIVERSARIES BIRTHDAYS
MEETINGS DINNER DANCES BUFFETS
OR OTHER SOCIAL FUNCTIONS

OUR MONK'S ROOM HOLDS 100 - 150 PERSONS



The Vale Guest House, 50 Tor-O-Moor Rd.
Woodhall Spa LN10 6SB
01526 353022

e-mail margot.mills@hotmail.co.uk

Margot and John welcome you to the Vale. Enjoy your full English breakfast overlooking our lake, watching the wildlife. All this within half a mile of a famous golf club and the village

Oglee Guest House

*Family-Run Guest House
situated on a peaceful
tree-lined avenue close to
the centre of Woodhall Spa*

All Rooms En-Suite

*16 Stanhope Avenue
Woodhall Spa
Lincs.*

Tel: 01526 353512

Woodhall Spa Cottage Museum

What our Visitors are Saying

Another crop of interesting and complimentary comments including one from Rose Mead, aged 99, who was born in Woodhall Spa. We also had a visit from our MP's father Sir Robert Atkins. As always the comments are very complimentary and once again the hands on approach and the old party games are appreciated by young and old!

J & A from Cotgrave Very nice. Not many places are hands on anymore

*B,G,T & M Absolutely fabulous little place. Wonderful staff and enjoyed by the whole
Welton Lincoln family. Thank you.*

*C family + Gran We all enjoyed our visit to your museum. Loved playing the games!
Carrington & Louth All expert fishers now.*

W & S Australia Very informative. Nice job.

DR Northants Another world - very well done.

SW Laceby A lovely experience visiting the old times, seeing how times were hard.

Sir Robert Atkins Excellent

R R Bourne Wonderful little museum. A real gem. Excellent social history.

*Rose Mead Rose was born in Woodhall Spa in Tor O Moor Rd in "Bracken". Then
(nee Johnson) lived in "The Laundry" Tor O Moor Rd. She married in Aug 1939 in the
Methodist Chapel and worked in the Cafe Royal on Station Rd.
(owned by Rosa Patchett).- paid 19 shillings a week. Her husband -
Clifford - worked in the Bakery until joining up in the army to be a baker in the
"Desert Rats". Rose drove the laundry van as an ambulance during the war.*

Phil Groves

150 Club Winners

June

£20 [6] Richard Sivill
£15 [101] Joanne Brearley
£10 [128] Lynnette Needham

July

£20 [40] Clare Cox
£15 [62] Pidge Wood
£10 [147] John Noble

August

£20 [62] Pidge Wood
£15 [31] Joe Stanhope
£10 [134] Delia Groves

September

£20 [113] Elizabeth Leech
£15 [123] Tom Johnson
£10 [65] Bob Fletcher

October

£20 [44] Janet Hunt
£15 [67] Brian Smith
£10 [8] Richard Sivill

Sue King

The directors would like to thank Sue for her hard work in organising the bookings for the Community Room, which she has done so ably for a number of years.

Community Room for Hire

At the Cottage Museum

Very reasonable rates:

Morning, afternoon, evening
or all day rates.

Maximum number of people 25-30

For further details and bookings
please contact:

info@cottagemuseum.co.uk

EBRINGTON ARMS

MAIN STREET KIRKBY ON BAIN LN10 6YT



Food is served Tuesday to Sunday
between noon and 2pm and 6pm - 9pm
Sunday Lunch available noon - 2pm



A family run traditional pub restaurant
serving good home cooked food
with a selection of cask and keg
ales.(CAMRA Good Beer Guide)
3.5 miles from Coningsby
and 2 miles from Woodhall Spa.

Families, children and dogs welcome.
The bar has a warm coal fire in winter.
Outside the patio area is covered
ensuring a dry seat whatever the
weather and the pleasant beer garden
has a gazebo and children's play area.

All Year Round -
A great place to eat and
drink!
Always advisable to book
Telephone 01526 354560

Petwood

Wine, dine and relax

Set in the heart of Lincolnshire, The Petwood Hotel is a perfect base for exploring the county's coast, the Wolds, aviation heritage sites and the historic city of Lincoln



For best available rates please call us on 01526 352411 or email reception@petwood.co.uk

Petwood Hotel, Stixwold Road, Woodhall Spa, Lincolnshire, LN10 6QG

www.petwood.co.uk





POPPY'S PAGE

This issue has a very Christmas feel with the theme being the Christmas Tree. I hope you enjoy reading about the origins of the Christmas Tree and have fun working out the names of 2 of Santa's Reindeer. Happy Christmas to you all and see you next time.

Bye for now. Poppy



The Story of the Christmas Tree

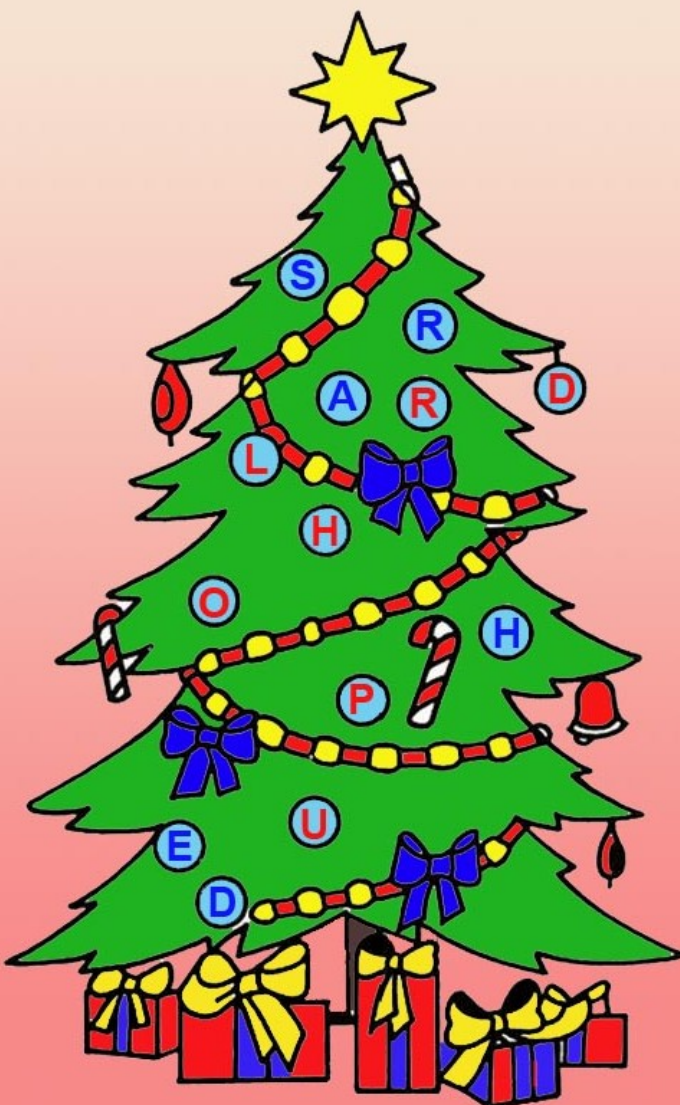
Hello everyone,

It will soon be Christmas!

My task is to decorate the tree which Thomas, Papa and I purchase from Mr. Bishop's nursery, behind the station on the Broadway.

Grandma Google says ancient people brought evergreens into their houses in winter and then several countries introduced fir trees.

CHRISTMAS TREE PUZZLE



In this country, Queen Charlotte, the German wife of George III had Christmas trees for children's parties; later, Prince Albert, married to our dear Queen Victoria, ordered one for Windsor Castle at Christmastide. In 1848, a picture of the royal tree was published and then everyone wanted one but only the upper classes could afford them at first.

Grandma told me a lovely German fairy story. One cold Christmas Eve a poor forester and his family gathered around the fire, heard a knock on the door. Outside was a shivering, lost little boy. They warmed and fed him and gave him one of their children's beds. Next morning the family was awakened by a choir of angels and the little boy had become Jesus! He went outside and brought in a branch of fir bent down with food, to thank the family for its kindness.

Have a lovely Christmas everyone!

Marjorie Sargeant

THE PUZZLE

The letters in the baubles spell the names of two of Santa's Reindeer, one in red and the other in blue. Answers are on page 11, but don't cheat!

Puzzle set by Jane Hodgson



WILLOW HOLT

Caravan & Camping Park

- **TENTS & CARAVANS**
- **STATIC HIRE & SALES**
- **ACCESSORY SHOP**

LODGE ROAD, TATTERSHALL. LN4 4JS

TEL: 01526 343111

The Friends of the Woodhall Spa Cottage Museum

Committee Members:

Chairman: Roger Webb	01526 353029
Carol Webb	01526 353029
Elizabeth Leech	01526 352595
Gladys Ireland	

Hello Friends,

In the last Friends report I wrote about the very real threat of the closure of the Tourist Information Centre in the Museum. East Lindsey District Council have withdrawn their support for the service so we are taking it on ourselves. ELDC are continuing to provide the leaflets which we will have to pick up from Horncastle. We know that the provision of this service will be yet another expense to cope with. However we strongly believe in the service and the support it gives to local businesses and our visitors is essential in helping our village and museum thrive.

Some of us enjoyed a visit to the Museum at RAF Waddington where our knowledgeable host was Chris Dean. It was Chris who delivered the lecture at the Golf about 100 years of RAF Waddington earlier this year. The numbers for the visit were restricted for logistical reasons but disappointingly there were still spare places. Please remember that you can bring along your friends who are not members of the Friends of the Museum to any of these outings.

When you are reading this the Museum will have closed until Easter 2017, but don't forget to pencil in your diary the always popular Victorian Christmas openings. I think that now is also a good time to look back over the season that has just finished and say a very big THANK YOU to each and every one of you who contributed in so many different ways to the continuing success of the café. This has become a firmly established and most welcome fund raiser for the Museum. We have also managed to achieve a much more equitable work sharing regime this year.

During the closed season the Friends team will be looking at what we can offer you in the visits and lecture area. We do have a number of suggestions but with some of them the cost of coach travel is exorbitant, to me anyway! That could be the Yorkshire man thinking but I will sound some of you out on these prices.

So now all that remains is for me to look ahead and wish you all the very best for Christmas and the New Year.

Roger Webb

Come and Join Us

The backbone of the Cottage Museum are our volunteers and some of them are putting a lot of hours in and could really do with a hand. Can you help? Do you have a few hours to spare in the month? It does not have to be a massive commitment. There are numerous opportunities with a person to look after the Community Room bookings very much needed.

If you would like to find out more without committing yourself then please call us on

01526 352456



What's On Guide

Friends Xmas Coffee Morning

26th November
St. Peters Hall
9.30 - 12 noon

Museum Victorian Christmas

Nov 26th & 27th
Dec 3rd & 4th
1 - 5 pm

Adult W/Shop Xmas cards & Decorations

10 am to 1 pm
Community Room

Winter Wassail around the Apple Tree

10th Dec. 2 - 4 pm
Museum Garden

Wildlife Watch

Indoor Xmas Activity
10 am - 12 noon
18th Dec
Community Room

See also
www.cottagemuseum.co.uk
& www.woodhallspa.org

