

Woodhall Spa Cottage Museum



Newsletter No. 22
March 2016

Woodhall Spa Cottage Museum

A Note from the Editor

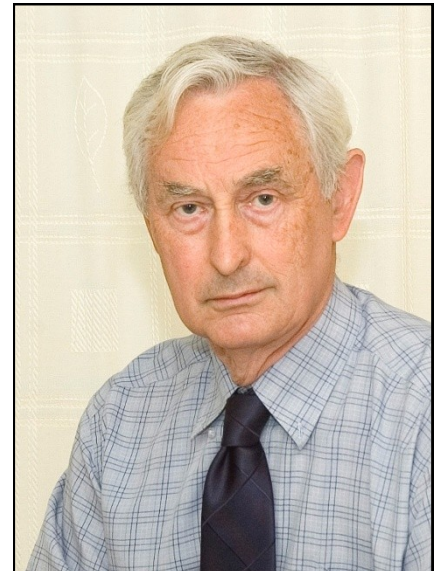
Welcome to the first Newsletter of 2016, it's March already and the spring and summer beckons - it doesn't seem possible! Easter is early this year, so the Cottage Museum will be opening at the end of the month, on Wednesday March 23rd. Patricia Duke-Cox has written a piece for us on the new displays for the 2016 season, which will give you all a good idea of what to expect.

Our main story, which is highlighted by the cover picture is the winning of the Sandford Award by the Education Team. There is a full write-up of the event on the opposite page. It is a very prestigious national award and we are all very proud to have received it.

This month sees the end of the Heritage Lottery Grant funding and our Chairman, Gill Noble writes about the lasting legacy this amazing opportunity has given to the museum and of course the wider community of Woodhall Spa and its visitors. There are the immediate benefits in the form of the refurbished museum building and the development of the outbuildings, but the other benefits are not so obvious. One of these is the provision of an Activities Manager and all the various events this has produced, which will all provide lasting benefits. One such event was the talk on Lincolnshire Folklore, which is covered on page 4. A capacity turn out, for what turned out to be a truly fascinating afternoon, made it a really worthwhile event.

All the regular features are here in this issue, including our look into the archives with Rodger Pickavance, David Radford's article, which this month focuses on St. Andrew's Church, Roger Webb's report on the Friends activities and last but not least Poppy's Page for the younger readers, though I suspect they aren't the only ones reading this and doing the puzzles! A new feature is Marjorie Sargeant's story of life in the village 100 years ago through the eyes of Bertha, which could become a regular feature. Do let us know if you enjoy her recollections.

Philip Groves



Cover Picture

Bishop Grosseteste University's Vice Chancellor, the Reverend Canon Professor Peter Neil presents a Sandford Award to the Cottage Museum, Woodhall Spa, represented by Chairman Gill Noble and Education Team member Judith Haddock

In this Issue

Page 3	The Sandford Award	Page 13	Woodhall Spa in March 1916
Page 4	Fire Training	Page 16	From the Collection
	Folklore Talk		150 Club Winners
Page 8	HLF Legacy	Page 18	Poppy's Page
Page 11	New Displays	Page 20	The Friends' Page
Page 12	At the Crossroads		

The Newsletter Committee

Chairman - Paddy O'Neill Editor- Philip Groves Roger Webb Marjorie Sargeant

To contact the Newsletter Team please write to:-

The Cottage Museum, The Bungalow, Iddesleigh Road, Woodhall Spa, Lincs. LN10 6SH

or email phil.delia.groves@btinternet.com

Reg. Charity: 1114268 Reg. Museum:1929

The Sandford Award for the Cottage Museum

Gill Noble, Chairman of the Woodhall Spa Cottage Museum and Judith Haddock, a member of the Education Team, recently attended the 2015 Sandford Award Ceremony where the certificates were presented by Professor Peter Neil, Vice-Chancellor of Bishop Grosseteste University. The Ceremony took place in London at the London Transport Museum.

The prestigious Sandford Award is an independently judged, quality assured assessment of education programmes at heritage sites, museums, archives and collections across the British Isles. It both recognises and promotes quality and excellence in education provision across the Heritage Sector.



Gill Noble and Judith Haddock at the Awards Ceremony at The British Transport Museum in London

The judges assessing the programme for the Sandford Award, concluded that, 'Visitors who undertake a school visit to the Cottage Museum will experience an insight into the lives of people of all ages in the local area through a unique photographic record of Woodhall Spa from Victorian times up to the middle of the 20th century, set in a family home from that period. The Education Team has developed interesting and stimulating programmes which capture children's imaginations and certainly enhance their learning experiences.'

The Cottage Museum offers a number of cross-curricular KS1 and KS2 sessions for schools which support the National Curriculum. The Education Programme is inspired by the unique and early 'prefab' building which is the Cottage Museum, the period it represents, the Wield family who lived in the bungalow and the unique Visual Archive which reflects the social history of Woodhall Spa and the surrounding area.

Kathy Holland, Activity Manager at the Museum said, 'We are all delighted to have won the Sandford Award which represents a highly respected quality mark for the Education Programme at the Cottage Museum.'

To find out about the Education programme at the Cottage Museum please visit Schools at www.cottagemuseum.co.uk

The Cottage Museum recently underwent a redevelopment and refurbishment supported by the Heritage Lottery Fund, reopening to visitors in 2013. Current activities at the Cottage Museum including the Education Programme, are supported by the Heritage Lottery Fund as part of the Museum redevelopment project.

Answers to Poppy's Puzzle

Broom, Duster, Polish, Carbollic Soap, Carpet Beater, Scrubbing Brush, Dolly Tub, Mangle

Woodhall Spa Cottage Museum

Fire Training



Left - some of the trainees . Centre - Chairman Gill Noble shows her skill. Right - Patricia Duke-Cox getting to grips with her fire!

Training for an event we all hope will never happen again. Directors and volunteers attended an extremely useful, and as you can see, hands on training session on the use of Fire Extinguishers. Following an in-depth session on the theory and use of the different types of extinguisher, it was all hands to the pumps, as you might say, to actually put out some fires.

The training session was organised by Museum Director, Tom Johnson, in association with Lincolnshire Fire and Rescue.

Lincolnshire Folk Tales

On the afternoon of Sunday January 31st. a capacity audience gathered for a talk by Folklorist Maureen James entitled "Lincolnshire Folk Tales".

I think we all wondered what the afternoon would bring and in the event it was a really fascinating insight into the stories told by previous generations of Lincolnshire people and what they mean.

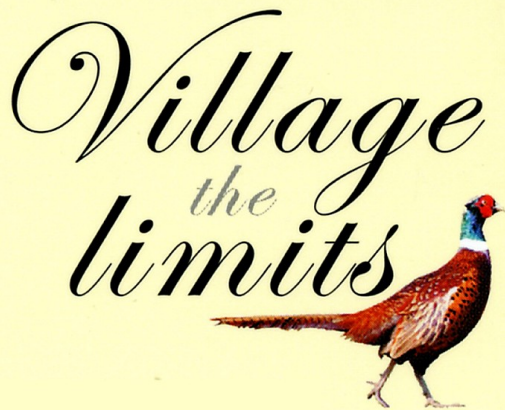
Particularly fascinating was the story of "Tiddy Mun", his curse and the ecological consequences of land drainage. He was not exclusively malevolent; if the

Fens flooded and the waters reached the villages, people would go out at night and call "Tiddy Mun wi'out a name, tha watters thruff!" ("Tiddy Mun without a name, the water's through!") until they heard the cry of a peewit, and the next morning the waters would have receded. Many more fascinating stories followed, providing not only great entertainment, but they were also very informative. Well worth the visit.



Maureen James delivers her talk to a packed audience in the Wild Room at the Cottage Museum

Philip Groves



The Village Limits
Stixwould Road
Woodhall Spa
Lincolnshire
LN10 6UJ

t: 01526 353312
e: info@villagelimits.co.uk
w: www.villagelimits.co.uk

Avoid disappointment call ahead

Country Pub
Motel
and
Restaurant



Winners
2006-2013

Billy & Sonia Gemmell
Hosts

Richard Sivill

GALLERY

OLD PHOTOGRAPHS COPIED
INSTANT PASSPORT PICTURES
FULL FRAMING SERVICE
PICTURE GALLERY
ARTISTS MATERIALS
ENGRAVING SERVICE / TROPHIES

4-6 High Street, Tattershall, Lincs.
Tel.: (01526) 345388

Woodhall Spa Cottage Museum

Visit

OAKLANDS~GRANGE PARKS

Horncastle Road, Woodhall Spa



A private park home estate offering both security and peace of mind. Developed to the highest standards with homes at affordable prices. You can be assured of a warm welcome.

Visit our new website on

www.oaklandsgrangeparkhomes.com

or for further details ring Heather Shepherd on

01526 352312

or email: oaklandsgrange@live.co.uk

or just “drop in”



MEDITERRANEAN BISTRO

the taste. the smell.
the passion.
the pleasure.

Open 7 days a week
12pm - 11:30pm

1 Station Road
Woodhall Spa
Lincolnshire
LN10 6QL

Tel: 01526 354466
Email: info@zucci.org
Website: www.zucci.org



adamcarter
solutions

All domestic interior & exterior
decorating projects welcome.

Visit my site and see the
standard.

www.adamcarter solutions.com

Tel: **01526 352056**

Mob: **07795 692 179**

TEA HOUSE IN THE WOODS TEA HOUSE & RESTAURANT

Woodhall Spa's Oldest Tea Rooms

Open Tuesday - Sunday from 10am

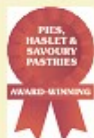
Offering homemade cakes, lunch & traditional afternoon teas

Food available all day

Evening restaurant menu from 5.30pm

Coronation Road, Woodhall Spa, Lincs. LN10 6QD 01526 354455

www.teahouseinthewoods.co.uk



R. J. Hirst



High Class Family Butchers of Woodhall Spa –
reviving historic Lincolnshire recipes
Artisan producers of Hirst's Heritage Foods



**2015 Select Lincolnshire Highly
Commended Finalist Best Retailer
Award & Best Producer Award**

**2014 Countryside Alliance Rural Oscars Top
Four Best Butchers Shop for the East of
England**

Telephone 01526 352321 or visit our website
www.rjhirstfamilybutchers.co.uk
Station Rd, Woodhall Spa (under the clocktower)

Toni O'Neill

Member of The Society
of Floral Painters



Commissions Undertaken for
Floral Paintings in Watercolour
in Memory of Your Special Occasion
or Flowers from your Garden

For more information call 01526 354982
or e-mail oneill_t3@sky.com

Woodhall Spa Cottage Museum

The Lasting Legacy of the Heritage Lottery Grant

In November 2011 there was understandable jubilation when museum volunteers learned that the second round bid for Heritage Lottery funding had been successful. This money would be used to refurbish the bungalow, rebuild the fire damaged outbuildings and install professionally designed displays suited to the expectations of 21st. century visitors.

In March 2016 this funding is coming to a close. The Development Committee, comprised seven museum directors and was tasked with managing this project, which at times proved to be very challenging. Two strands had to be addressed, The Capital Works, which covered the buildings, and the Activity Plan which would deliver a wide range of events and activities designed to attract new audiences. How has the museum and the people who use it benefited from this funding?



Volunteers hear the news of the HLF grant

The most important asset is the bungalow itself which has been completely renovated, both inside and out. Structurally it is now sound and should last for another hundred years. Two rooms are furnished, the front room proving to be particularly popular with visitors of all ages as they enjoy the toys and games. The new interpretation boards, display cabinets, the data bases and the magic lantern shows supply information about many aspects of Woodhall Spa's heritage. Digital displays enhance the temporary exhibitions.

The outbuildings have completely transformed the way volunteers are able to work. The computer suite provides state of the art equipment. The digital archive is both easily updated and accessible. Artefacts are stored on rolling stacks in a temperature controlled environment. The long store has provided another area for storing larger items and housekeeping essentials.

The Community Room has provided a light and airy space which is in constant use. It is also hired out to community groups, which generates income for museum funds. Café style refreshments are now offered for sale at numerous events throughout the year. The paved courtyard, surrounded by flower beds and tubs, is enjoyed by both volunteers and visitors.

The purpose built section, designed to house the Bath chair and John Wield's refurbished Dark Room, have added two outside displays generating a lot of visitor interest. The new toilet, which has been designed for use by all, has importantly enabled the museum to be fully accessible to every visitor.

An Activity Manager was funded to oversee the delivery of the Activity Plan. This has been very successful. Over the past three years every section of the Plan has been addressed. Heritage Lottery funding has enabled equipment to be purchased and outside professionals to lead occasional sessions for all age groups, with more projects also offered to schools .

This has resulted in an annual overall increase in visitor numbers which would have been impossible without the improved facilities.

In these straitened financial times, it is vital that we work hard to ensure sustainability. The support that we have received from The Heritage Lottery Fund has been invaluable. More opportunities will continue to be created for the increasing number of people wanting to spend time in the museum that is as always, warm, welcoming and well loved.

Gill Noble



PREMIER PET CARE

QUALITY PET FOOD
AND ACCESSORIES

PROFESSIONAL FRIENDLY
SERVICE AND ADVICE

STOCKISTS OF ALL MAJOR
BRANDS PLUS EVERYTHING
AVAILABLE TO ORDER

FREE LOCAL DELIVERY

01526 352626

Unit 1, The Broadway Centre, The Broadway
WOODHALL SPA, Lincs. LN10 6ST
mail@premierpetswoodhallspa.co.uk
www.premierpetswoodhallspa.co.uk

Grimsby Town Fish Products

on The Mall car park

**every Friday morning
10.00 - 12.00 noon**

for HOME DELIVERIES

ring JOHN on 07708 596982

Pitchaway Guest House

*Enjoy the unique
welcome, hospitality
and comfort of
Pitchaway guest house.*

*Situated in a premier position within
two minutes walk of the Woodhall Spa
National Golf Centre, the home of
amateur golf in England,
this impressive Edwardian family
residence could be your home-from-home.*

*Pitchaway has ample parking space
for eight cars.*

*Single, twin, double and family rooms
are available*

*Traditional full English breakfast
is served in our large dining room*

Contact us for enquiries or to make a reservation
The Broadway, Woodhall Spa, Lincolnshire LN10 6SQ
+44 (0)1526 352969

lorraine.hopkins2010@gmail.com
www.pitchawaybandb.co.uk



**The Bakery and Delicatessen
of Woodhall Spa**
are proud to offer

Fresh Bread and Rolls Baked Daily
Pastries and Fancy Small Cakes
and
Celebration Wedding & Birthday Cakes
All baked daily on our premises

Woodhall Spa Cottage Museum

India Village

6 The Broadway
Woodhall Spa
Lincolnshire LN10 6ST
Tel: 01526 352223/354657



Opening Times
Midday - 2.00pm
5.30pm - 11.30pm
7 Days a Week

**10% Discount
on Take-Aways**

*For the Best Indian
and
Eastern Dishes*

The Mall Woodhall Spa

Come and visit us for a warm welcome.
Good Food, Good Beer, Good Company!

Open Monday, Wednesday,
Thursday and Friday
with food served
Lunchtimes 12-2 and evenings 5-9
Saturday with food served 12-9

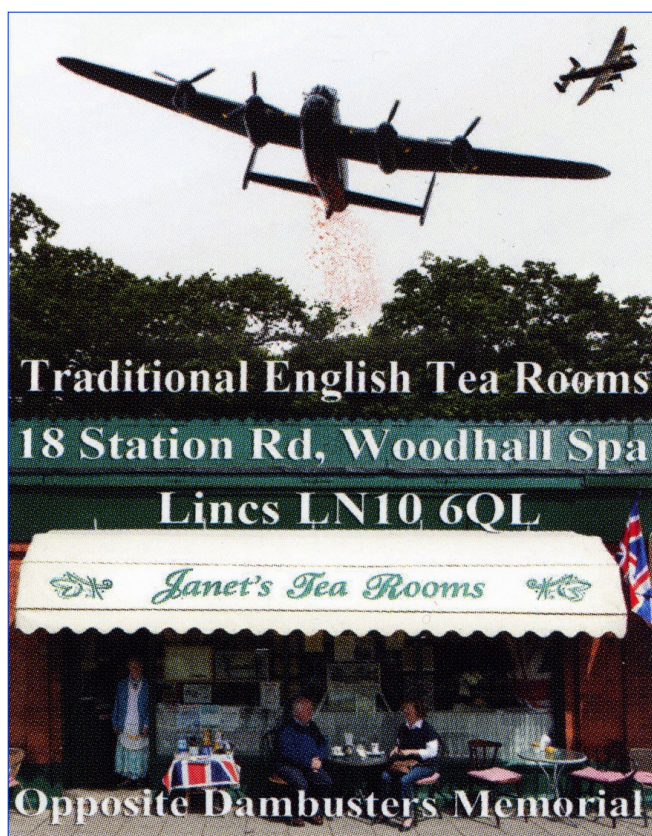
Sunday carvery
served 12-3 (booking advisable)

Children's menu available

Dogs are most welcome in the bar area
We look forward to seeing you soon!

01526 352342

or email themalltavern@btinternet.com



THE MELROSE BROADWAY CENTRE WOODHALL SPA

A warm friendly family run
business hidden away at the
bottom of the Broadway Centre,
serving back to basics,
home-cooked foods using
local produce.

Open 9am Monday - Saturday

**Breakfasts
Home cooked lunches
All day menu**

**TEL 07983638246
OR
07930878803**

Museum Displays for the 2016 Season

The museum will continue with its existing exhibitions that give a time-line of events in Woodhall Spa and the world. Audio-visual presentations of John Wield's photographs will be rotated monthly to give information about the man and his family plus another on the Spa as seen through his eyes. Modern displays feature information on the Spa and the time of the two World Wars in three of the rooms. The ever popular front room which offers visitors the chance to sit and relax, play games with family members or poke around the drawers remains, with some new items to find. There will be opportunities for our younger visitors to go searching for specific items.

The changing displays in the temporary exhibition room will introduce new topics and have community involvement. The first exhibition will be about Past and Present: Commercial Properties, building on the success of last year's exhibition about Past and Present: Homes that created much interest from local people. This will last from opening at Easter until the beginning of June.

From the first weekend in June there will be a photographic display set up by the Oaklands Park Photographic Group and it is their intention to make this a changing display over three months. More detailed information will be available nearer the time on our website.

With the Queen celebrating her 90th birthday this year, there will be a short term display of royal commemorative memorabilia which we hope the public will contribute. This will be in the middle of June to coincide with her official birthday.

For children there are activities planned that are described on Poppy's Page in this newsletter.

A short-term temporary display on Arnhem will be put together by a loyal volunteer in the Community room for the Arnhem commemoration to be held on 10th September. This is nostalgic for so many of our visitors that weekend.

The last display during the normal open season will feature schools in Woodhall Spa and Roughton, starting with St. Andrew's School which opened its doors in 1947. It is entitled "Please Sir!"

The doors shut at the end of October. However, in November and December there will be the popular Christmas display when both schools and the public will be able to visit.

Patricia Duke-Cox



**Woodhall Spa Cottage
Museum presents**

A Talk on English Spas

**and the water cure 1840 to 1960:
Woodhall Spa in the national context
with Dr Jane Adams**

**At the Petwood Hotel
Friday 20th May 2016
2pm to 4.30pm with cream tea**

Tickets £10 from Patricia Duke-Cox

Email: info@cottagemuseum.co.uk

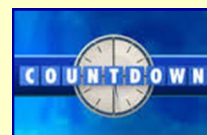
or

Phone Museum Office: 01526 352456

All proceeds to the Cottage Museum funds

Accredited Museum: 1929 Reg. Charity 1114268 www.cottagemuseum.co.uk

WOODHALL SPA COTTAGE MUSEUM QUIZ EVENING



**At the Abbey Lodge Inn
Saturday 9th April 2016 starting at 7.00 p.m.**
[doors open at 6.30 p.m.]

**Teams of 4 to 6 will compete in an evening
of letters, numbers, raffle and fun.
Tickets £10 per head which includes a bar meal.**

**If you can form a team apply to
Patricia Duke-Cox at the Cottage Museum to register
or email either of the following addresses
info@cottagemuseum.co.uk or duke-cox@hotmail.co.uk
or phone 07944 487 880 (leave a message)
All proceeds to Woodhall Spa Cottage Museum funds**

Woodhall Spa Cottage Museum

At the Crossroads

Hello everybody,

I am writing this just as I hear we are going to have some wintry showers of sleet and snow Winter? What is that!! Something, I fear, associated with cold winds, frosts and, yes, wintry showers (if we are lucky!)

Then images of standing at the crossroads on Remembrance Day, shivering, paying respects to those brave souls who fought for our freedom, all flood through my mind!!

You will know, perhaps, that just behind the war memorial is a graveyard, quiet and sheltered and cared for, the home of very interesting graves overlooked by some lovely trees and guarded by Woodhall Spa's vociferous crows. How many of you, who have recently settled in our Spa, know much about the origins of the church that stood in this place and that it celebrated its 150th anniversary in 1997: namely, St Andrew's Church?



St. Andrew's Church & war memorial



The interior of St. Andrew's Church

The story of this much loved church, the first in Woodhall Spa, began in the 1840s. Previous to its foundation, the Revd Edward Walter held services in the old Victoria Hotel, soon to become famous with its Swiss-trained waiters and beautiful grounds.

Woodhall Spa was a tiny settlement at this time but the reputation of its bromo-iodine rich waters was beginning to spread beyond the locality....but that's another story.

In 1845 the foundation stone of St Andrews was laid. Stone was obtained from Stixwold which was formerly part of the priory there. Then on September 14th 1847, the Bishop of Lincoln, John Kaye, consecrated the site.

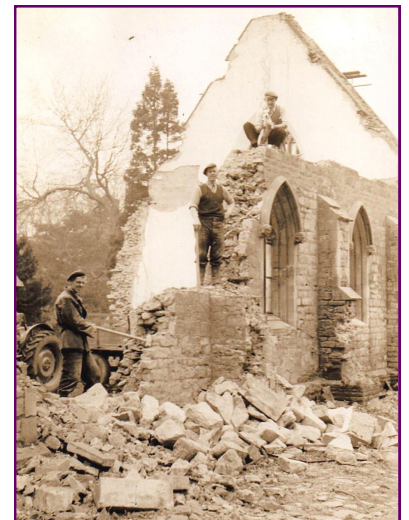
By the end of the century, the population was outgrowing the church. St Peter's was built and St Andrew's began to suffer the ravages of the English climate with dampness affecting the badly-cut stonework.

Wartime bombing took its toll and by the mid fifties this little part of Woodhall Spa's history was demolished.

If you venture into the churchyard you will find a memorial to Richard Adolphus Came who was the architect who planned Woodhall Spa.

The Revd Edward Walter, whose inspiration St Andrews was, is also buried in the churchyard. He died on November 11th 1877 after walking from a meeting in Woodhall Spa to Langton in a snowstorm. It is said that he invented a bicycle many years before such machines became the vogue, but clearly that was of no use on the day of his death!

It also appears he had a brother who was related to Jane Austen by marriage. Perhaps one of you brave readers could research the life of this interesting gentleman who was so instrumental in caring for the souls of those early Woodhall Spartans.



Demolition in progress

David Radford, Founding Chairman

Woodhall Spa in March 1916

Dear Readers,

I trust you are in good health in this month of March, in the year of our Lord 1916.

My name is Bertha and I have been asked to tell you about my village of Woodhall Spa. It is a pretty place with its wide Broadway and tree-lined avenues and as the name tells you, it is a spa, with hundreds of visitors arriving during the Season, to take our famous water, which is rich in iodine and bromine.

My husband, Percy and I keep a boarding house on Iddesleigh Road; even as I write we are busy with preparations for our first visitors. We are hoping for a good Season as many of the Continental spas are closed, owing to the hostilities.

Oh, this dreadful war! No-one expected it to last so long. The village is still shocked that 5 of our young men who answered their country's call were killed in hostilities last year. Arthur Webster was only 18. He had enlisted because of Lord Kitchener's appeal – you know those posters we see everywhere, pointing a finger and saying, "Your Country Needs You." Well, he joined this New Army but he was killed, along with thousands they say, at a place called Ypres. His family are big Methodists at the Wesleyan Methodist Church at Kirkstead. Another lad killed was Arthur Daft, son of the coalman. I know Annie, his mother. They live at "Ivanhoe," on Stixwould Road. His brother is still serving and wrote thanking us for a hamper.

The village sends hampers to all our boys at the front. Residents and shopkeepers give anything they think will be appreciated, such as soap and sardines, condensed milk, chocolate, tobacco and many cigarettes, of course.

The Tribunal meets regularly to hear petitions from men to exempt them from service. This month, an elderly farmer pleaded for his son who is looking after the farm; three brothers are already serving in the military. He was given 2 month's exemption.

The Post Office has announced that Sunday post will be abolished during the continuance of the war. This is very inconvenient.

But I must not let you think we are all misery here! There was a Grand Concert last month with the Lincoln Minster Quartette and such an amusing humourist.

And we went to Leonard Scarborough's wedding – he lives at "Woodlea," on Tattershall Road. His bride, Gladys, wore a beautiful gown of cream satin, with a veil and orange blossom.

Meantime, I must collect curtains, which my son, Alfred, took to Bycroft's Laundry and go to Chapman's London and Manchester Stores at the crossroads. Chapman's are advertising reduced price tea but all they mean is that they now have to pay a duty of one shilling to a pound of tea but the price is the same to us! I will buy dried fruit, so Ellen (my daughter) can make cakes – there is so much to do before the Season starts!



Marjorie Sargeant

RUSSELL GREEN

Residential Care Home for the Elderly
11 Stanhope Avenue, Woodhall Spa
Lincolnshire LN10 6SP



Set in the beautiful village of Woodhall Spa.
With a short level walk to all the village amenities
24 hour care provided by professionally trained staff

A Home Care Service is also available
taking the same standard of care
and commitment out into the local community

For more detailed information visit our web site at
www.russellgreencarehome.co.uk
telephone: 01526 352879

01526 352538

**LUNCH & DINNER
MON -SAT**



**SUNDAY
LUNCH
12 - 2 pm**

**ABBEY LODGE INN - KIRKSTEAD
WOODHALL SPA**

DON'T BE DISAPPOINTED!!

REMEMBER TO BOOK YOUR TABLE FOR YOUR NEXT VISIT

WEDDINGS ANNIVERSARIES BIRTHDAYS
MEETINGS DINNER DANCES BUFFETS
OR OTHER SOCIAL FUNCTIONS

OUR MONK'S ROOM HOLDS 100 - 150 PERSONS



The Vale Guest House, 50 Tor-O-Moor Rd.
Woodhall Spa LN10 6SB
01526 353022

e-mail margot.mills@hotmail.co.uk

Margot and John welcome you to the Vale. Enjoy your full English breakfast overlooking our lake, watching the wildlife. All this within half a mile of a famous golf club and the village

Oglee Guest House

*Family-Run Guest House
situated on a peaceful
tree-lined avenue close to
the centre of Woodhall Spa*

All Rooms En-Suite

*16 Stanhope Avenue
Woodhall Spa
Lincs.*

Tel: 01526 353512

Woodhall Spa Cottage Museum

From the Collection

PC04418 – It is the time of year for pantomimes so I thought that we would have a theatrical/dressing up theme this time. This postcard is from John Wield's portrait album and shows two men dressed in fancy dress. The bag between them says 'Mutt and Jeff'. Not sure whether they were a professional act or not. Another picture in the album shows them doing a Marx brothers type walk.

PC03687 – This postcard is also from John Wield's portrait album. A note says that they are 'the Salmon children'; confirmation would be appreciated if anyone recognises them!



The album has over a hundred sample portraits in it from the early to mid 1900s, mostly of young ladies, and we have no idea who the vast majority of them are. It would be good to put names to some of the faces if you are able to assist.

If you have any local pictures that we can add to the museum's visual assets collection then please get in touch. We are at the museum every Tuesday morning or you can leave a message on 01526 352456 or info@cottagemuseum.co.uk and we will get back to you. We can scan in pictures whilst you wait and our new accommodation is far more pleasant than the old 'back room'. We do need images of the 1940s – 1960s as well as earlier pictures.

Rodger Pickavance

150 Club Winners

October

£20 [87] Peter Needham
£15 [72] Reg Wood
£10 [133] Stephen Berry

November

£20 [36] VOC Antiques
£15 [53] Jenny Atherton
£10 [46] Stella Arden

Annual Draw

£150 [19] Lucy Hibberd
£70 [70] Gordon Roy
£40 [63] Ben Fawcett

Community Room for Hire

At the Cottage Museum

Very reasonable rates:

Morning, afternoon, evening
or all day rates.

Maximum number of people 25-30

For further details and bookings
please contact:

Sue King 01526 353823

EBRINGTON ARMS

MAIN STREET KIRKBY ON BAIN LN10 6YT



Food is served Tuesday to Sunday
between noon and 2pm and 6pm - 9pm
Sunday Lunch available noon - 2pm



A family run traditional pub restaurant
serving good home cooked food
with a selection of cask and keg
ales.(CAMRA Good Beer Guide)
3.5 miles from Coningsby
and 2 miles from Woodhall Spa.

Families, children and dogs welcome.
The bar has a warm coal fire in winter.
Outside the patio area is covered
ensuring a dry seat whatever the
weather and the pleasant beer garden
has a gazebo and children's play area.

All Year Round -
A great place to eat and
drink!
Always advisable to book
Telephone 01526 354560

Petwood

Wine, dine and relax

Set in the heart of Lincolnshire, The Petwood Hotel is a perfect base for exploring the county's coast, the Wolds, aviation heritage sites and the historic city of Lincoln



For best available rates please call us on 01526 352411 or email reception@petwood.co.uk

Petwood Hotel, Stixwold Road, Woodhall Spa, Lincolnshire, LN10 6QG

www.petwood.co.uk





POPPY'S PAGE

Hello everybody and a happy New Year to you all. Another Christmas gone but at least we have the summer to look forward to. Gill Noble has presented all the family activities that are planned for you to do at the museum. We also have a Word Puzzle for you which I hope you have fun solving.

Bye for now. Poppy



Family Learning Activities for 2016

There are lots of activities planned for children and families during 2016 so why not come to the museum and join in the fun.

23rd. March to 9th. April

An Easter quiz, clues to solve in the museum.

Wednesday 1st. June "Red, White and Blue"

Come and create crowns and flags. 10.00am-12.00

Wednesday 3rd. August "Fun and Games in the Garden"

Toys and games old and new to enjoy. 10.00am.-12.00

Wednesday 10th. August "Creative Clay"

Let your imagination go wild as you explore what you can make. 10.00am.- 12.00

Wednesday 17th. August "Fun and Games in the Garden"

Toys and games old and new to enjoy. 10.00am.-12.00

15th. July to 11th. September

"Sensational Summer Senses," clues to solve in the museum.

The museum quizzes are free to accompanied children, 16 and under. There is a charge of £3.00 per child for all the other activities. Children must be accompanied by an adult. Please contact Gill Noble on 01526 353 455 to book a place

Gill Noble

Poppy's Puzzle

Great Grandma would have been busy spring cleaning her house once the days were longer and sunnier. Here are some items that she would have used. How many of these do we still use today? Rearrange the letters to see what they are. The capital letter begins each word.

moroB	sutDre
sholiP	oilCrabc aSop
terCap reeBat	bungcribS hurBs
loyDI ubT	gleMan

Answers on Page 3



WILLOW HOLT

Caravan & Camping Park

- **TENTS & CARAVANS**
- **STATIC HIRE & SALES**
- **ACCESSORY SHOP**

LODGE ROAD, TATTERSHALL. LN4 4JS

TEL: 01526 343111

The Friends of the Woodhall Spa Cottage Museum

Committee Members:

Chairman: Roger Webb	01526 353029
Carol Webb	01526 353029
Elizabeth Leech	01526 352595
Gladys Ireland	

Hello Friends,

Welcome to the first newsletter of 2016. During 2015 we put extra effort into recruiting new members for the Friends and we have also changed the rules. The Friends year no longer runs from August every year but it is a rolling 12 months from the anniversary of your joining. This means you can feel free to get new members at any time of the year. Spread the word and try bringing your friends along to the Museum. The display team has been working hard during the closed season preparing new displays for 2016.

Whilst we are trying to reach out using modern technology it has been pointed out to me that not all our supporters are computer/internet users. It has also been said that some of you struggle to read the 'What's on Guide'. Whilst we do not have the budget for a large print version of the Newsletter, we can try and produce a larger print version of the "What's on Guide". If you would like to receive a copy, then please let me have your details and I will examine the logistics and feasibility.

Our first lecture of 2016 takes place at the Golf Hotel on Saturday the 19th of March. Our guest speaker is Chris Dean, a member of the RAF Waddington Heritage Centre team. He will be taking us through the 100 years of life at RAF Waddington in this, its centenary year. Tickets for this event, priced at £6.00 including refreshments, can be obtained from Roger or Carol.

In the run up to Easter we will be on the streets again at the weekends. We are repeating last years' successful "guess how many eggs in the basket" competition. If you do see us then come over and say hello or, better still, have a go.

Roger Webb

Come and Join Us

The backbone of the Cottage Museum is our volunteers and some of them are putting a lot of hours in and could really do with a hand. Can you help? Do you have a few hours to spare in the month? It does not have to be a massive commitment. There are numerous opportunities from meeting and greeting to gardening. If you would like to find out more without committing yourself then please call us on

01526 352456



What's On Guide

100 Years of RAF Waddington.

19th March at
Golf Hotel. 2pm
Tickets £6.00
from Carol or Roger
01526 353029

Museum open from 23rd of March 10.30

Adult Craft Workshop

13th of April
10.00 to 13.00.

Cutwater Productions *present* Trouble on the Seafront'

at St. Peters Hall
evening 23rd of April.

Woodhall Country Show

22nd of May.
The Museum will be
having a Trade and a
Heritage stand.

Adult Craft Workshop

June 15th.
10.00 to 13.00

For Quiz & Spa talk See adverts page 11

See also
www.cottagemuseum.co.uk
& www.woodhallspa.org

