

Woodhall Spa Cottage Museum



The Christmas Past Event
was an outstanding success

Newsletter No. 43
March 2023

Woodhall Spa Cottage Museum

A Note from the Editor

The 2023 season will soon be upon us and the museum will once again open its doors to the public on Wednesday April 5th. The successful 4 day week routine will be adopted once more, so apart from a few exceptions the museum will be open on Wednesdays through to Saturdays from 10.30am until 4pm with last admissions at 3.30pm. The season runs from April 5th until October 29th.

A full season of activities is being planned and this is explored in some detail on page 5., with the first major event on April 22nd being the Spring Talk, the subject of which is Kirkstead Abbey and is to be given by David Start.

This year sees the coronation of King Charles III and a section of the new display is devoted to this. It is also the 75th anniversary of the National Health Service and this is recognised with a special health related display, with artefacts drawn from the collection with links to Woodhall Spa.

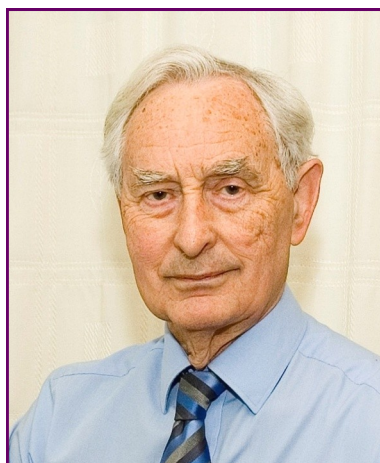
This issue contains all the usual features, including the popular "From the Collection" in which Nicholas Duke-Cox relates the history surrounding the World War 1 Memorial, which was dedicated 100 years ago in March 1923. Also from 100 years ago we have the latest letter from Bertha, written by Marjorie Sargeant. Marjorie also takes us through the thoughts of the "Mellow Observer" from the booklet "Axle Cooling". Her subject this time is the Spa Waters.

For the young and old Poppy's Page has a fascinating puzzle relating to butterflies, which ties up with the "Butterfly Hunt" Trail which is being held at the museum from April 5th to April 30th.

Annette Southcott brings us up to date on the Friends and introduces the newly formed Activities and Events Group which is breathing new life and initiatives into the social and fundraising side of the museum.

I hope to see you at some of the events and wish you all a great season ahead.

Philip Groves



Front Cover Story

Visitors gathered in the museum garden last November to sing carols to music played by the Woodhall Spa Community Band conducted by Jan Allen, who is also conductor of The Spa Singers. Full report of this event on page 3.

In this Issue

Page 3	Christmas Past	Page 9	Exhibits for the new season
Page 4	Re-presenting the Holocaust	Page 12	Axle Cooling - The Spa Waters
	New Museum Website	Page 16	Bertha, March 1923
Page 5	Events for 2023	Page 18	Poppy's Page
	200 Club Winners	Page 20	The Friends' Page
Page 8	From the Collection		What's On Guide

The Newsletter Committee

Chairman - Paddy O'Neill Editor - Philip Groves Marjorie Sargeant

To contact the Newsletter Team please write to:-

The Cottage Museum, The Bungalow, Iddesleigh Road, Woodhall Spa, Lincs. LN10 6SH
or email philanddeliagroves@gmail.com

Reg. Charity: 1114268 Reg. Museum:1929

Christmas Past

On the 26th November the museum staged a special Christmas Event, "Christmas Past" to which admission was free. This was the first big event we have done, certainly since lock down, where all sections of the Museum volunteers were involved. The museum had been decorated in old style trees and streamers plus plenty of old Christmas ornaments. The collections team had excelled themselves in creating suitably old Christmas displays in the cabinets plus decking the whole museum, including the Community Room, with a sense of Christmas Past.

Judith Haddock, Jane Hodgson and the rest of the Education Team were enjoying helping many children and parents participate in a selection of crafts, including making birds and animals out of pine cones, clay modelling, making reindeers and dogs from micro fleece squares, plus creating wool ball creatures.



Children by the Christmas Tree



Children engrossed in the craft work



Patsy entertains two of the visitors



Trish and Lynnette on the outside stall



Annette's indoor refreshments

Patsy and Ivan were entertaining visitors to the museum as our resident meeters and greeters, telling the story of the museum and its previous occupants, while Kelly and Tracie admirably held the fort in reception and also helped out

on the cake stall. Trish and her helpers ran the cake stall which also sold gingerbread, brownies, sugar plums, handmade tree decorations, knitted toys and second-hand books amongst other things.

Annette Southcott and the Friends team provided refreshments in the form of a spiced fruit punch, teas/ coffees and hot chocolate, plus

mince pies and ginger men biscuits. They were kept busy throughout the day. Thanks are also due to the volunteers who erected and took down the awnings; well done to everyone. 146 visitors came into the museum, with others visiting the garden and courtyard, many drawn by the two sessions of carol singing to music provided by The Woodhall Spa Community Band, directed by Jan Allen, who is also conductor of the Spa Singers. The event was a resounding success with over £600 being taken over the course of the day. One of our volunteers even said "what are we doing for next Christmas?"



The Community Band

Woodhall Spa Cottage Museum

The Annual Memorial Lecture - "Re-presenting the Holocaust"

Our Annual Memorial lecture, entitled "Re-presenting the Holocaust" was held at the Golf Hotel on Saturday 12th November 2022. The talk attracted an enthusiastic audience of about 70 people. James Bulgin, head of content at the new Holocaust exhibition at the Imperial War Museum in London, talked us through the reasons, design and application of the new displays. Much thought had gone into the way that the exhibits were displayed and even the special text and fonts used. The attendees were most appreciative of his knowledge of the subject and the way in which he and his team decided to display this divisive subject. At the end of the talk members of the audience were able to ask some very interesting and pertinent questions, which James answered very fully. A raffle was held during the interval whilst everyone had the opportunity to take the refreshments offered and approximately £300 was raised towards the museum running costs. Thanks go to Annette Southcott and her Friends team for organising this event.



James Bulgin delivers his talk on re-presenting the Holocaust

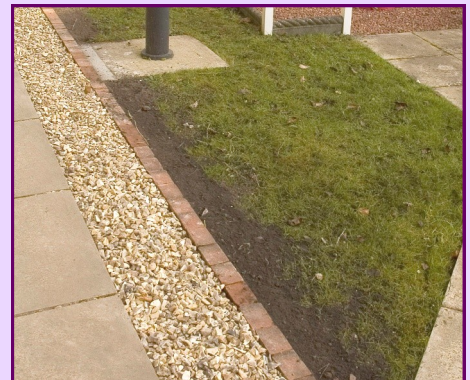
Nigel Webb

Safety Improvements in the Museum Garden



Original path edging

Work has been undertaken to improve the safety of visitors to the museum with the pathway having the bricks levelled so children are not balancing on upturned bricks that always attracted their balancing abilities, sometimes holding parents' hands.



New levelled path edging

Museum to get a new website

The museum is having a new website which it is hoped will go live in early March, Nigel Webb and Kelly Jestin are working closely with Shaun of Craven Digital on the revamped website.

Shaun is planning to have the first draft ready for Nigel and Kelly to view by the beginning of February which will then be followed by some training on the new site. If all goes to plan the new site will be live by early March and available for everyone to view.

Museum Events Planned for 2023

A full programme of events is being planned for the coming season. The season will open with a Butterfly Hunt, organised by the Education Team, which will run from 5th April to the 30th April.

On Saturday April 22nd we welcome David Start, who will deliver the Spring Talk. His subject is Kirkstead Abbey. David is an archaeologist who moved to the county in 1988 to run the Heritage Trust of Lincolnshire, where he was director until his retirement in 2013. He has a great interest in medieval monasticism - particularly the lesser known Premonstratensians ... who are particularly numerous in Lincolnshire.



Kirkstead Abbey ruins

Kirkstead Abbey, near Woodhall Spa, was a Cistercian monastery founded by Hugh the Breton in 1139 - it was the first daughter abbey of Fountains in Yorkshire and one of Lincolnshire's largest monasteries. During the dissolution of the monasteries in 1537 the monks of Kirkstead were implicated in the rebellion known as the Lincolnshire Rising and Henry VIII had Abbot Haryson executed and closed Kirkstead down. The ruins became a hunting lodge but now only fragments and the intriguing chapel of St. Leonard remain. This talk by David Start will trace the history of the abbey, trace its archaeological remains and talk about some new research being carried out to understand the evolution of the Kirkstead landscape.

Tickets are £7.00 each and will be available to purchase online or in person from the Museum Office Tuesday-Thursday 9.00am -3.00pm.

The museum will be open on Coronation Day, 6th May when admission will be free. The museum will have a marquee at the Coronation Event at Jubilee Park on Sunday May 7th with the Education Team organising a Craft Event and the Collections Team will take some relevant items to display. There will also be a Raffle. Monday May 8th is the Coronation Bank Holiday as well as being World Donkey Day. It is hoped to open the museum from 10.30am to 4pm. The Education Team will run a Quiz Trail and Crafts from the Community Room.

The museum will have a stand in the Heritage Tent at The Woodhall Show on Sunday May 21st. with suitable items from the collection on display.

As usual the museum will participate in the 40s Weekend, 8th and 9th July. There will be various stands in the garden for Tombola, Craft items, 1940s entertainment and the Patio Cafe will be open. More details of this event in the next Newsletter, together with the Music in the Garden Events planned for Sunday afternoons throughout August, The Annual Memorial Lecture in

November, date yet to be confirmed and the Christmas Event to be held on Saturday November 25th.

200 Club Winners

October 2022

£25 [179] Charlie Bell
£20 [99] Joseph Gordon
£15 [58] Anna Peacock
£10 [198] Tim Peacock

November 2022

£25 [136] Lynnette Needham
£20 [5] Andy Hibberd
£15 [78] Karen Parsons
£10 [77] Walt Limb

December 2022

£100 [83] David Hill
£75 [123] David Skinns
£50 [154] Jackie Cottingham
£25 [11] Jane Hodgson

Volunteer Coffee Mornings

A coffee morning is normally held on the second Wednesday of the month, to enable volunteers from the various teams to meet each other and to meet some of the Directors.

It affords a great opportunity to exchange ideas and make suggestions, or just have a general chinwag! The next event is planned for Wednesday March 8th from 10.30am. until 12 noon.

Please check our website, or social media for the latest information.

Visit

OAKLANDS~GRANGE PARKS

Horncastle Road, Woodhall Spa



A private park home estate offering both security and peace of mind. Developed to the highest standards with homes at affordable prices. You can be assured of a warm welcome.

Visit our new website on

www.oaklandsgrangeparkhomes.com

or for further details ring Heather Shepherd on

01526 352312

or email: oaklandsgrange@live.co.uk

or just “drop in”



WATERMAN CARAVAN SERVICES
FULLY QUALIFIED CARAVAN & MOTORHOME
ENGINEER
BASED IN HORSINGTON

FULLY MOBILE

- *FULL SERVICING**
- *HABITATION SERVICING**
- *UNDERGEAR SERVICING**
- *GAS QUALIFIED AND CERTIFICATES PROVIDED**
- *DAMP REPAIRS**
- *ACCESSORY DEALER**

TEL: 01526388350

MOB: 07824778357

EMAIL: david.waterman6@btinternet.com

WWW.CARAVANSUPPLIESINTERNATIONASHOP.COM

DECORATING **SERVICES**

Professional Painting
and
Decorating Company

Operating for
over 20 years

Woodhall Spa Office 01526 568568

Horncastle Office 01507 834568

During 09:00am to 5:00pm

or email:

decoratingservices8000@gmail.com

TEA HOUSE IN THE WOODS TEA HOUSE & RESTAURANT

Woodhall Spa's Oldest Tea Rooms

Open Tuesday - Sunday from 10am

Offering homemade cakes, lunch & traditional afternoon teas

Food available all day

Evening restaurant menu from 5.30pm

Coronation Road, Woodhall Spa, Lincs. LN10 6QD 01526 354455

www.teahouseinthewoods.co.uk

CRAHAM FIDLING Traditional BUTCHERS

woodhallbutcher.co.uk • 

7 The Broadway, Woodhall Spa, LN10 6ST

 01526 352196 •  07866805594

Local traditional butcher selling a wide variety of meats, reared locally on the outskirts of Horncastle. Cooked meats, a selection of pies and condiments.

Also selling Lincolnshire specialities, including award-winning Lincolnshire sausage, stuffed chine and pork and apple burgers.

Orders taken for pubs, tea rooms, restaurants, schools, hotels and care homes. Orders can also be made by phone and delivered free of charge within 10 miles!



Toni O'Neill

Member of The Society
of Floral Painters



Commissions Undertaken for
Floral Paintings in Watercolour
in Memory of Your Special Occasion
or Flowers from your Garden

For more information call 01526 354982
or e-mail oneill_t3@sky.com

Woodhall Spa Cottage Museum

From the Collection

In the November 2022 newsletter, I wrote about an important centenary to Woodhall Spa and in this issue, I turn to another.

Up and down our land in the 1920s memorials were erected to remember the fallen of that great conflict of the early 20th century, namely World War I. They gave great solace to those relatives who had no known grave over which to mourn. Lutyens' magnificent monument at Thiepval gave succour for those relatives who lost loved ones at the Somme, but that necessitated a journey to France. Local memorials were a welcome alternative. Some communities did not have a memorial, as all those who served returned – the so-called 'Thankful Villages'.

The Woodhall memorial at the 'crossroads' in the village was dedicated on Sunday March 18th 1923 and so being close to 100 years ago, it is very apt to relate that day here.

The memorial was given as a gift to the village by Mrs Alexander Trotter at the behest of her late husband. The design was undertaken by Mr William Henry Wood, architect of Newcastle upon Tyne. He designed a number of war memorials, mainly in the north-east of England, several of which, including that at Woodhall, are listed.



The memorial is located at the south-east corner of the churchyard of the former Church of St Andrew and originally commemorated in red, 21 local men who died in the conflict (an additional name was added to the memorial at a later date).

It was unveiled by Captain Stafford Vere Hotchkin MC and dedicated by the local rector, the Reverend William Harry Benson-Brown. Following the Second World War, the inscription was altered to include the dates of that conflict and the names of the nine casualties were subsequently added to the memorial. It was sculpted by Mr H Jackson of Lincoln.

The picture above, though not a good image, is a rare one of the actual ceremony with the Reverend Benson-Brown clearly seen in the centre of the picture.

Nicholas Duke-Cox

Exhibits for the New Season

The collections team is now experiencing their busiest time of the year putting together a fresh display for the forthcoming season. Some of the displays are static whereas others allow for regular changes which generally reflect a particular event or anniversary. This year of course there is the coronation of King Charles III and this will be prominently featured. However, a lesser known anniversary is that of the National Health Service (NHS) which was born on 5th July 1948. Some of you may have been "present at the birth" but all of us have made use of the NHS at some time during our lifetime. The display will take in items from the collection reflecting links to the medical services available in Woodhall Spa. As usual the Temporary Exhibition Room will have 3-4 different displays throughout the year. The opening display looks at buildings past and present in Woodhall Spa.

The various "information boards" affixed to the walls have been in place since the redevelopment. As funds have become available the museum is able to update and change one of these wall boards and this will be worked on over the next few months.

The museum aims to continue to evolve and this is thanks to the goodwill of our volunteers.



Part of the 75th Anniversary NHS display

Tom Johnson

Come and Join Us

The backbone of the Cottage Museum is our volunteers and some of them are putting a lot of hours in and could really do with a hand. Can you help? Do you have a few hours to spare in the month? It does not have to be a massive commitment. There are numerous opportunities to suit most interests. If you would like to find out more without committing yourself then please call us on **01526 352456**

Community Room for Hire

At the Cottage Museum
Very reasonable rates:
Morning, afternoon, evening or all day rates.
Maximum number of people 16

For further details and bookings please contact:
info@cottagemuseum.co.uk

Woodhall Spa Cottage Museum

India Village

15 The Broadway
Woodhall Spa
Lincolnshire LN10 6ST
Tel: 01526 352223/354657



Opening Times
Midday - 2.00pm
5.30pm - 11.30pm
7 Days a Week

**10% Discount
on Take-Aways**

*For the Best Indian
and
Eastern Dishes*

fashion by
rieker
ANTISTRESS®



PETER SCOTT
1 The Broadway
01526 353935
Open 7 days

Traditional English Tea Rooms
18 Station Rd, Woodhall Spa
Lincs LN10 6QL

Janet's Tea Rooms

Opposite Dambusters Memorial

THE MELROSE

BROADWAY CENTRE WOODHALL SPA

A warm friendly family run business hidden away at the bottom of the Broadway Centre, serving back to basics, home-cooked foods using local produce.

Open 9am Monday - Saturday

Breakfasts
Home cooked lunches
All day menu

TEL 07983638246
OR
07930878803



PREMIER PET CARE

QUALITY PET FOOD
AND ACCESSORIES

PROFESSIONAL FRIENDLY
SERVICE AND ADVICE

STOCKISTS OF ALL MAJOR
BRANDS PLUS EVERYTHING
AVAILABLE TO ORDER

FREE LOCAL DELIVERY

01526 352626

Unit 1, The Broadway Centre, The Broadway
WOODHALL SPA, Lincs. LN10 6ST
mail@premierpetswoodhallspa.co.uk
www.premierpetswoodhallspa.co.uk

Grimsby Town Fish Products

on The Mall car park

every Friday morning
9.00 - 10.00 am

for HOME DELIVERIES

ring STEVE on 07708 218821

Tim Fry

Traditional Signwriter

Signwriter with over 35 years experience

- Vintage Vehicles
- Commercial Vehicles
- Trailers & Curtain sides
- Narrow Boats
- Shop Signs, Sign boards
- House Signs
- Banners & Shop Canopys
- Exterior & Interior Walls

Please visit my website at....

www.timfrysignwriting.uk

Instagram... @timfrysignwriting.uk

01526 354492  07810 351511

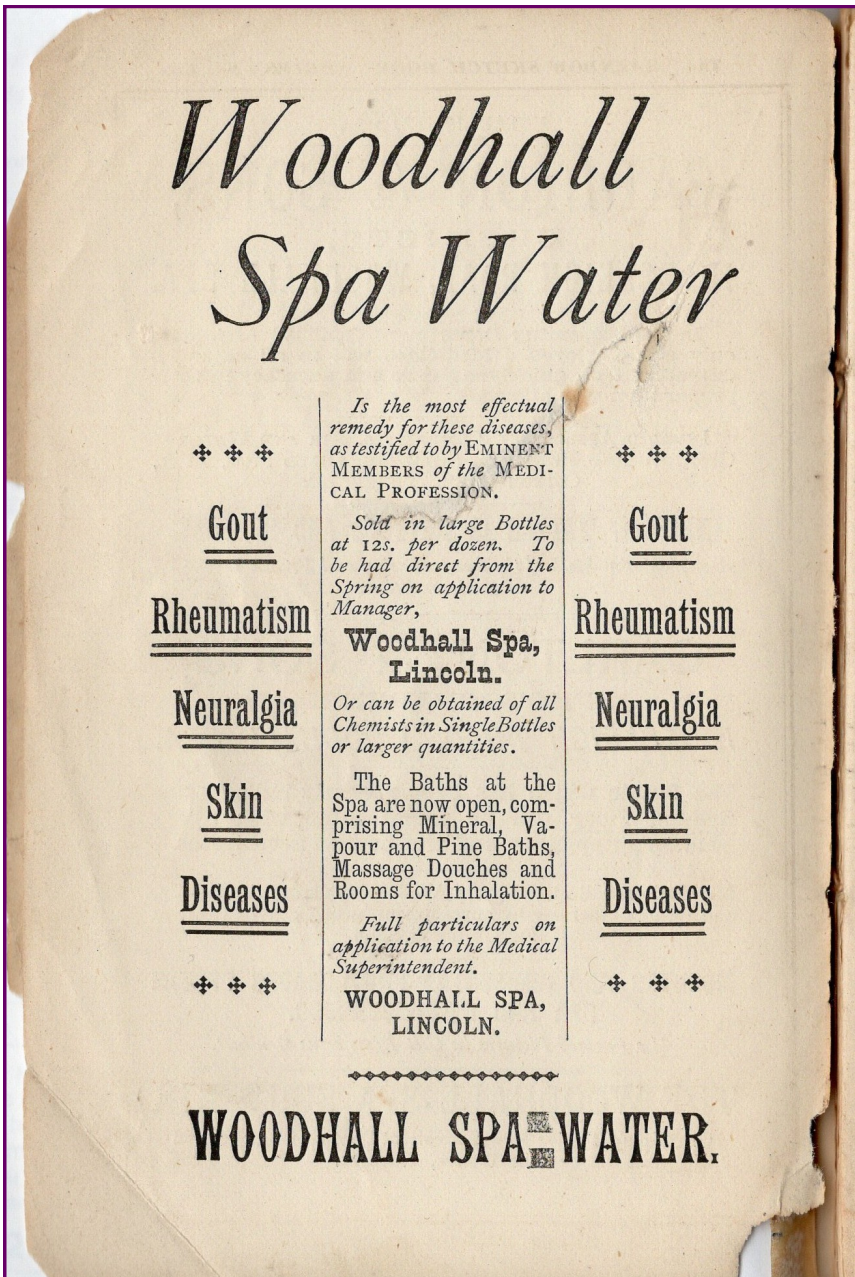
Woodhall Media

Maps to magazines | locals to tourists
we have the media to promote all businesses



Woodhall Media Ltd
20 Abbey Dr, Woodhall Spa LN10 6QU
T: 01526 580383 | www.woodhallmedia.co.uk

Axle Cooling - The Spa Water



In 1890 a "Mellow Observer" has travelled by train from London to Woodhall Spa and is intent on curing his cough and stiff joints by undergoing treatment at the Spa Baths. This advertisement for the beneficial water appears in his booklet, "Axle Cooling."

Interestingly, there is no mention of the large quantities of bromine and iodine present in the water. These were its chief claim to fame and at first this place was not Woodhall Spa but "The Iodine Spa."

Disappointingly, Mellow Observer tells us nothing of the treatment he received. He writes that he is desirous of cleaning his blood "under process of the ingenious bath appliances and draughts of medicinal water." Towards the end of his booklet he states that he has been "thoroughly clarified by the Waters and soothed by the tonic climate." So that's all right then.

However, he describes the account of a gentleman he met. "I arrived crippled under a severe attack of gout, charged with uric acid and unabsorbed morbid products. The treatment consisted of a total

immersion in the Mineral Water for 20 minutes every day and I perseveringly drank 40 ounces of the water daily. In 3 days I could walk with firmness and lightness. I will hang up my crutches and as a London physician of over 60 summers, I can the more value the specific action of the limpid water."

Mellow Observer was obviously impressed by this enthusiasm from a medical man.

Marjorie Sargeant

Answers to Puzzle on page 18

BRIMSTONE, PEACOCK, COMMA, RINGLET, GATEKEEPER, LARGE WHITE, RED ADMIRAL, TORTOISESHELL.



Moorland Service Station

Fuel & Convenience Store
Horncastle Rd, Woodhall Spa LN10 6UX Tel: 01526 354333

- Groceries
- Hot & cold drinks
- Logs/kindling
- Jet Wash
- Charcoal
- Bottled Gas
- Disposable BBQs
- Snacks
- Motor Supplies
- Ice cream
- House Coal
- Sandwiches




THE
DOWER HOUSE
HOTEL

**CELEBRATE THIS FESTIVE SEASON
AT THE DOWER HOUSE HOTEL**

www.dowerhousehotel.co.uk/christmas | 01526 352588

Underwoodhall

Jewellery and Antiques



The Broadway, Woodhall Spa.
01526 353815

**7 TOOLS,
1 BATTERY**
STIHL's new range of cordless garden power tools offers unparalleled performance and convenience.

At the cutting edge of battery-power technology.

STIHL **VIKING**

For full sales and service of STIHL & VIKING products:
CHARLES H. HILL LTD
Moor Lane, Horsington,
Woodhall Spa, Lincolnshire
www.charleshill.co.uk
Tel: 01526 388281

withamview
VETERINARY SURGERY

We are an independent small animal practice owned and run by two vets with over 20 years of combined experience. We provide our own out-of-hours service to ensure that there is a familiar face when you need it most.

- * 10% discount on consults for service families.
- * Pet Health Plans available.

please contact us, or visit our website for further information.
www.withamviewvets.co.uk

OPEN NOW
MON - FRI 8:30am - 6pm
SAT 8:30am - 12pm
01526 268060
enquiries@withamviewvets.co.uk

29 Alexandra Road
Woodhall Spa
Lincolnshire
LN10 6RE

01526 352538

LUNCH & DINNER
WED - SAT
12 - 2 pm & 6 - 8.30 pm
CLOSED ALL DAY
MON & TUE



SUNDAY
LUNCH
12 - 3 pm

**ABBEY LODGE INN - KIRKSTEAD
WOODHALL SPA**

DON'T BE DISAPPOINTED!!

REMEMBER TO BOOK YOUR TABLE FOR YOUR NEXT VISIT

WEDDINGS ANNIVERSARIES BIRTHDAYS
MEETINGS DINNER DANCES BUFFETS
OR OTHER SOCIAL FUNCTIONS

OUR MONK'S ROOM HOLDS 100 - 150 PERSONS

**R. ARNOLD
Funeral Directors**

Independent Family Funeral
Directors Est 25 years.

**Newly opened in Louth
161 Newmarket, Louth LN11 9EJ
01507 608200**

**Lincoln - 01522 542701
Mablethorpe - 01507 473100
Sutton-on-Sea - 01507 442300
Alford - 01507 463200
Woodhall Spa - 01526 341707**

We take care of the smallest of details with
compassion and dignity, we personalise
every service for each family.



NHP

WHOLESALE, RETAIL & FREE HOME DELIVERY SERVICES

FIND US AT OUR SHOP IN WOODHALL (5 WITHAM ROAD),
AND AT OUR SHOP IN CONINGSBY (54 HIGH STREET).

LIKE US ON FACEBOOK- [NHP of Sibsey.](#)

YOU CAN CALL US ON **01526 354320**, TO PRE ORDER YOUR
FRUIT BASKETS, FLOWERS, PLANTS, 25KG POTATOES AND
VEG ORDERS OR CONTACT US ON FACEBOOK.

WE OFFER A HUGE VARIETY OF FRESH LOCALLY GROWN
PRODUCE AS WELL AS OTHER FIRST-CLASS PRODUCE. WE
ALSO STOCK PLANTS FOR YOUR GARDENS ALL YEAR ROUND.

SEASONALLY THERE WILL ALSO BE PUMPKINS, CHRISTMAS
TREES AND HOLLY WREATHS AVAILABLE.



Woodhall Spa Cottage Museum

Bertha, March 1923

Dear Readers

Whatever next? Mr. Fellows, has advertised that he will be installing a wireless in the Mall for the interest of his customers! Perce says most men go for a chin-wag about local affairs over their beers and won't want to listen to a spluttery voice from London. I say it would be good to know what is happening without waiting for the newspapers. But of course, I would not go to a pub.

A hockey club for gentlemen has just been formed in the Spa. Sometimes we see girls from Miss Lunn's High School playing hockey. I think the new club was the idea of Mr. Hotchkin and I hear he is to be captain.

But my bit of excitement is that Perce and I have been to the Pavilion Cinema! A corrugated iron shed has been built on the back of the Pavilion to hold the projector and inside, the best seats (for the sharpest image) are deck chairs at the front. Our seats were in the middle. Fortunately, I managed to persuade Perce that the benches at the back, which only cost a few pence, would be too uncomfortable.



A 1923 Wireless Set

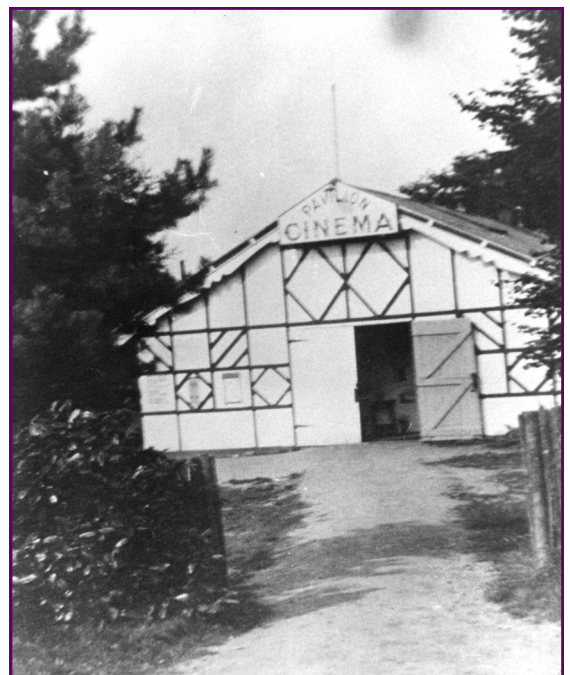


Deck Chairs at the front of the Cinema

Some of the films are serials, which end at a desperate point so everyone will go next time to see what happens.

Anyway, the lights went down and "Wild Women and Tame Lions" started. It was a comedy and really funny. In truth, I was a bit embarrassed by Perce's guffaws but he enjoyed it so much we are going to the Pavilion Cinema again!

There are lovely swathed curtains at each side of the stage and Mrs. Tyler, from the sweet shop, is at the front to play the piano, choosing pieces fit the action.



The Pavilion Cinema

Bertha
March 1923

Marjorie Sargeant

EBRINGTON ARMS

MAIN STREET KIRKBY ON BAIN LN10 6YT



Food is served Tuesday to Sunday
between noon and 2pm and 6pm - 9pm
Sunday Lunch available noon - 2pm



A family run traditional pub restaurant serving good home cooked food with a selection of cask and keg ales. (CAMRA Good Beer Guide)
3.5 miles from Coningsby and 2 miles from Woodhall Spa.

Families, children and dogs welcome. The bar has a warm coal fire in winter. Outside the patio area is covered ensuring a dry seat whatever the weather and the pleasant beer garden has a gazebo and children's play area.

**All Year Round -
A great place to eat and
drink!
Always advisable to book
Telephone 01526 354560**

Petwood

Wine, dine and relax

Set in the heart of Lincolnshire, The Petwood Hotel is a perfect base for exploring the county's coast, the Wolds, aviation heritage sites and the historic city of Lincoln



For best available rates please call us on 01526 352411 or email reception@petwood.co.uk

Petwood Hotel, Stixwold Road, Woodhall Spa, Lincolnshire, LN10 6QG

www.petwood.co.uk





POPPY'S PAGE

presented by LOKI

Happy new year to you all and I hope you had a happy Christmas. This time we have a Butterfly puzzle for you to complement the Spring Trail at the museum. Hope to see some of you at one of this years events. Do come and say hello!

Bye for now, Loki



Events in 2023

5th April until 30th April

The Butterfly Hunt in and around the Museum.
Look for Butterflies as a caterpillar, chrysalis or adult
at the start of Spring.

7th May

Craft Activities run by the Museum Education Team in Jubilee Park
to celebrate the King's Coronation

8th May

Celebrate World Donkey Day at the Museum.
Make donkey masks, follow a donkey trail,
pin the tail on the donkey.

BUTTERFLY HUNT PUZZLE

The Spring Trail in the Museum this year is a Butterfly Hunt.
Every butterfly goes through 4 different phases in its life: egg, caterpillar,
chrysalis and adult. Butterflies go through the winter as adults, chrysalises
or caterpillars depending on which species they are.

Can you rearrange the letters in these words to find 8 of our most common
butterflies?

MINTBORSE, OAKCEPC, MACOM,
TINGREL, EATERGPEEK,
AGERL THIEW, ERD DIALRAM,
LOTSHORSETIEL

When you have worked out the names maybe you can find out in which form
they spent the winter.

Answers on page 12

Jane Hodgson



WILLOW HOLT

Caravan & Camping Park

- **TENTS & CARAVANS**
- **STATIC HIRE & SALES**
- **ACCESSORY SHOP**

LODGE ROAD, TATTERSHALL. LN4 4JS

TEL: 01526 343111

The Friends of the Woodhall Spa Cottage Museum

Committee: Annette Southcott

Membership Secretary: Kelly Jestin
(Hours of work Tuesday - Thursday 9.00-4.00pm
email friends@cottagemuseum.co.uk)

Dear Friends

Hope you are all well and have survived the Christmas and New Year festivities without catching any viruses which seemed to have affected a lot of people.

Despite the Museum being closed to the public over the winter months, Friends activities have continued including our regular coffee mornings. In November, in addition to the talk by James Bulgin from the Imperial War Museum, the Friends Group hosted a 'behind the scenes' visit to the Kinema in the Woods for 20 people. Philip the manager, and staff member Joanne gave an interesting insight into the history of the building and a tour of the inner workings of the projection room and the Compton organ. I don't want to reveal too much as we will probably book another tour later in the year for those who were unable to attend. Suffice to say, it's well worth a visit.

Also at the end of November, Friends joined forces with the Education, Collections and Volunteer teams to take part in the 'Christmas Past' event which was a great success. Our mulled punch and Entertainment mince pie stall was kept busy from the moment we opened and it was lovely to see so many children exploring the Museum, many for the first time.

These joint ventures will continue throughout the year through the newly formed Activities and Events Group which has met twice so far to plan a series of initiatives throughout the year. We always need new people to help out in a variety of ways so if you have spare time especially in July and August and are good at gardening, baking, serving teas or washing up then we definitely have a job for you! Just let us know by dropping an email to the Museum or at one of the regular coffee mornings.

Spring is just around the corner and we're looking forward to the reopening of the Museum in April and resuming our programme of activities. The first of these is the annual Spring talk by David Start, an archaeologist who ran the Heritage Trust of Lincolnshire until 2013. The subject will be Kirkstead Abbey including its part in the Lincolnshire Rising in 1537 and promises to be a fascinating look at the evolution of Kirkstead. The talk will be held on April 22nd at 2.30pm in The Golf Hotel, The Broadway, Woodhall Spa.

In the meantime we look forward to seeing you at the coffee mornings which are now on the second Wednesday of each month with a couple of exceptions which will be notified in advance.

Best wishes

Annette Southcott



What's On Guide

Spring Talk
Kirkstead Abbey

by David Start
22nd April 2.30pm
Golf Hotel - £7.00
Tickets online or from Museum
Office Tues-Thur 9am -3pm
-0-

Coronation Weekend

Sat 6th May
Coronation Day Museum Open
FOC

Sun 7th May
Marquee at Jubilee Park
Crafts, Raffle and items from
Museum Collection

Mon 8th May
Museum open 10.30 - 4pm
World Donkey Day
Craft Session & Quiz Trail
-0-

Woodhall Spa Show
Sun May 21st

Stand in Heritage Tent
-0-

40s Weekend 6/7 July
Tombola, Crafts,

Entertainment in the garden
Refreshments at Patio Café
-0-

For the latest information visit
www.cottagemuseum.co.uk

